

Jeffrey P. Helland, 1107 Technology Parkway, Cedar Falls, Iowa 50613-6951, (319)-266-0161

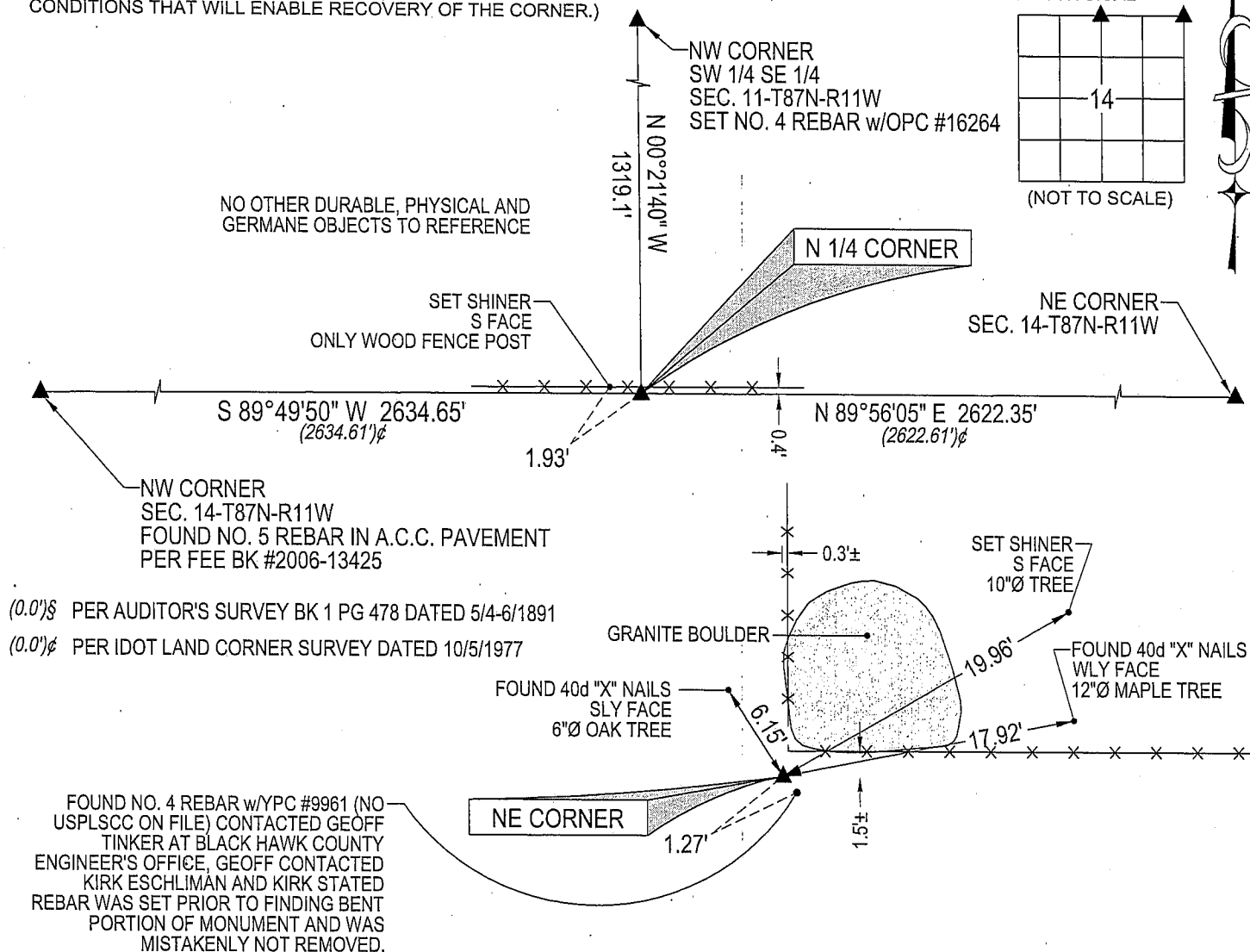
UNITED STATES PUBLIC LAND SURVEY CORNER CERTIFICATE
OFLAND SURVEY MONUMENTS SITUATED IN SECTION NO. 14, TOWNSHIP NO. 87 NORTH, RANGE
NO. 11 WEST OF THE FIFTH PRINCIPAL MERIDIAN, BLACK HAWK COUNTY, IOWA.
PREVIOUSLY RECORDED IN N/A(SHOW REASON FOR PREPARING THIS CERTIFICATE, THE EVIDENCE AND DETAILED PROCEDURES USED IN ESTABLISHING THE
CORNER POSITIONS AND MONUMENTATION FOUND OR PLACED.)

MONUMENT DESCRIPTION AND REMARKS:

NO USPLSCC ON FILE. SURVEY COMPLETED IN THE S 1/2 OF SEC. 11-T87N-R11W.

- **N 1/4 CORNER:** BLACK HAWK COUNTY ENGINEER REFERENCE TIES CALLS FOR [S.C.M.] IDOT LAND CORNER SURVEY DATED 10/5/1977 FOR PROJECT #1-380-7(16)--01-07 CALLS FOR [FOUND CONCRETE MONUMENT 6" DEEP.] ALL TIES OBLITERATED. FOUND STANDARD CONCRETE MONUMENT w/BRASS CAP 0.8' DEEP.
- **NE CORNER:** BLACK HAWK COUNTY ENGINEER REFERENCE TIES CALLS FOR [S.C.M.] IDOT LAND CORNER SURVEY DATED 10/5/1977 FOR PROJECT #1-380-7(16)--01-07 CALLS FOR [FOUND CONCRETE MONUMENT EXPOSED.] ALL TIES OBLITERATED. FOUND BROKEN OFF TOP OF STANDARD CONCRETE MONUMENT EXPOSED SOUTH OF CORNER POST, CONTINUED EXCAVATION AND FOUND THE BASE, 0.8' DEEP. SET NO. 4 REBAR 0.23' NORTH OF CENTER POINT OF SAID MONUMENT FOR MAGNETIC DETECTION.

PLAN VIEW

(SHOW A MINIMUM OF THREE REFERENCE TIES TO DURABLE PHYSICAL OBJECTS, RELEVANT MONUMENTS AND PHYSICAL
CONDITIONS THAT WILL ENABLE RECOVERY OF THE CORNER.)

(BEARINGS ARE BASED UPON GEODETIC NORTH)

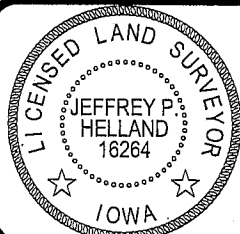


HELLAND ENGINEERING & SURVEYING, LTD.

1107 Technology Parkway
Cedar Falls, Iowa 50613-6951
(319)-266-0161SHINER = 8D NAIL & 1 5/16"Ø METAL SHINER
OPC = PLASTIC CAP (O=ORANGE, R=RED, Y=YELLOW)

(00') RECORDED AS

FILE NAME: 07-117C2.DWG

I hereby certify that this land surveying document was prepared
and the related survey work was performed by me or under my
direct personal supervision and that I am a duly licensed Land
Surveyor under the laws of the State of Iowa.

Jeffrey P. Helland 1/31/07

Jeffrey P. Helland
License Number 16264
My license renewal date is December 31, 2007.
All pages or sheets are covered by this seal except:

LIST CORNERS TO BE INDEXED

CORNER	SECTION	TOWNSHIP	RANGE
N 1/4 CORNER	14	87N	11W
NE CORNER	14	87N	11W