

PROOF FILED FOR RECORD AUG 20 2004 AT 10:00A.M. FEE 1-5.00/ - 1.00/

COMPARED

BLACK HAWK COUNTY RECORDER

TEKIPPE ENGINEERING PC 128 SOUTH VINE ST WEST UNION, IA 52175

TEKIPPE ENGINEERING, P.C., 128 South Vine Street, West Union, Iowa 52175 Phone (563) 422-5131

## UNITED STATES PUBLIC LAND SURVEY CORNER CERTIFICATE

OF

Land Survey Monuments situated in Section 13, Township 87 North, Range 11 West of the Fifth Principal Meridian, BLACKHAWK County, Iowa.  
Previously recorded in none in County Recorder's Office.

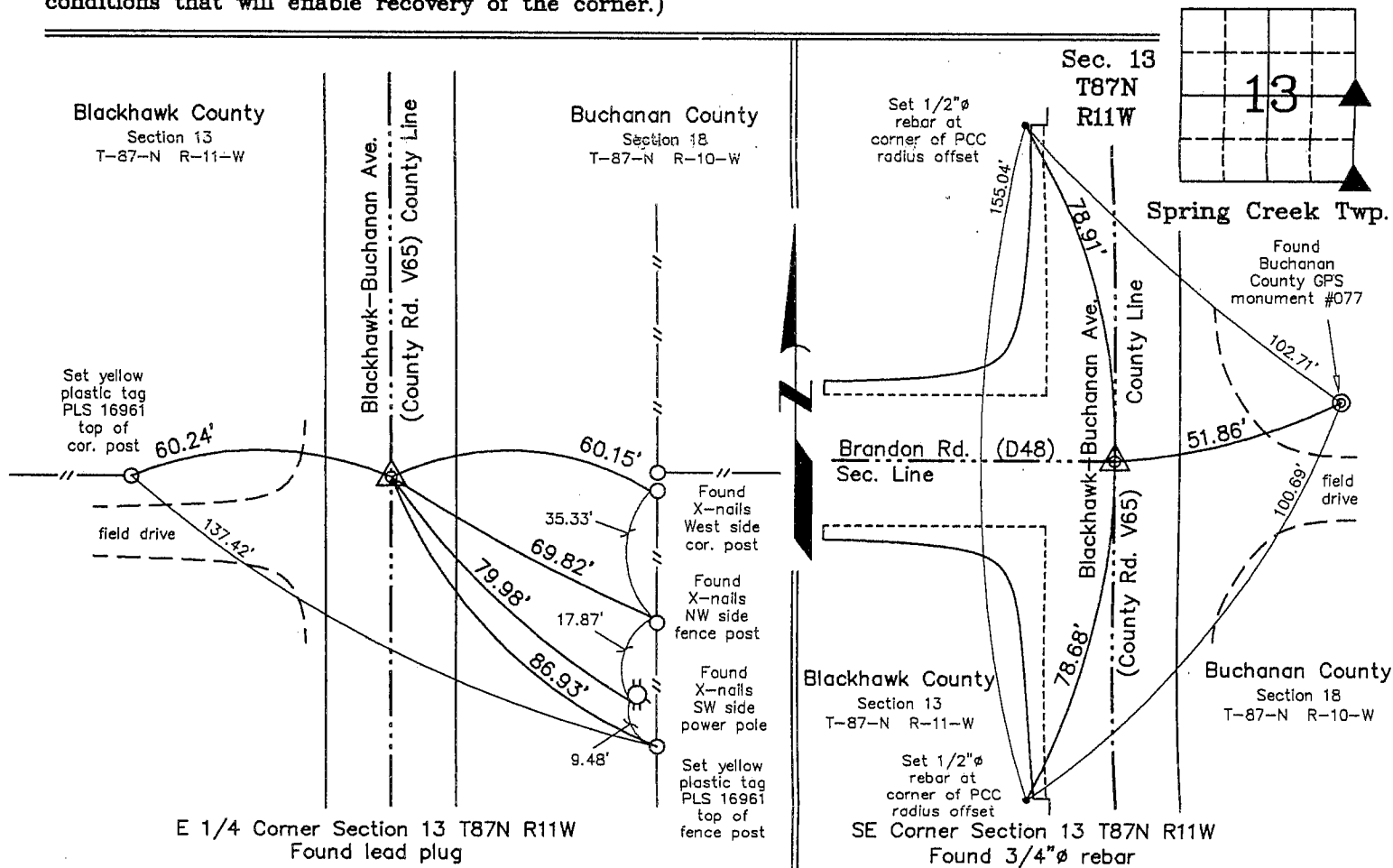
(Show reason for preparing this certificate, the evidence and detailed procedures used in establishing the corner positions and monumentation found or placed.)

Monument Description and Remarks: E 1/4 Corner Section 13 T87N R11W: Found lead plug with information obtained from a Land Corner Survey made by Juan Hernandez for Iowa Department of Transportation Project Buchanan County I-380-7(13)--01-10.

SE Corner Section 13 T87N R11W: Found 3/4"Ø rebar with information obtained from a Section Corner Certificate recorded in the Buchanan County Recorder's Office in Book 1, Page 272 as NW Corner, Section 19 T87N R10W. All reference ties were missing. Three reference ties were added.

PLAN - VIEW

(Show a minimum of three reference ties to durable physical objects, relevant monuments and physical conditions that will enable recovery of the corner.)



I hereby certify that this land surveying document was prepared and the related survey work was performed by me or under my direct personal supervision and that I am a duly licensed Land Surveyor under the laws of the State of Iowa.

Michael J. Shimak August 19, 2004  
Michael J. Shimak Date

License number 16961  
My license renewal date is December 31, 2005.  
Sheets covered by this seal: Individual

### List Corners to be Indexed

Corners	Section	Twp.	Range
E 1/4	13	87N	11W
SE	13	87N	11W

X:\Section Corners\Sec. 13\13-87-110y.dwg  
Project Number 04164.LS  
FB. 16F PG. 13-18