

INDEX *VS*

BLACK HAWK COUNTY, IOWA:ss

FEE BOOK # 2006 25191

PROOF

FILED FOR RECORD APR 19, 2006, AT 10:00A. M. FEE 1-5.00-1.00/

COMPARED

Patricia A. Jess

BLACK HAWK COUNTY RECORDER

KESS & ASSOCIATES INC

Kirk D. Eschliman, P.L.S. Iowa Lic. No. 9961, 723 Broadway Street, Waterloo, Iowa 50703 - Phone: 319-234-0509

UNITED STATES PUBLIC LAND SURVEY CORNER CERTIFICATE

11

OF "12"

87

LAND SURVEY MONUMENTS SITUATED IN SECTION SEVEN (07), TOWNSHIP NINETY (90) NORTH
RANGE THIRTEEN (13) WEST, OF THE FIFTH PRINCIPAL MERIDIAN, BLACK HAWK COUNTY, IOWA.
PREVIOUSLY RECORDED IN (NOT PREVIOUSLY RECORDED) (BOOK, PAGE, DOCUMENT NUMBER, ETC.) IN THE COUNTY RECORDER'S OFFICE.

(SHOW REASON FOR PREPARING THIS CERTIFICATE, THE EVIDENCE AND DETAILED PROCEDURES USED IN ESTABLISHING THE CORNER POSITIONS AND MONUMENTATION FOUND OR PLACED.)

MONUMENT DESCRIPTION AND REMARKS:

CURRENT SECTION CORNER CERTIFICATE NOT ON FILE IN THE BLACK HAWK COUNTY ENGINEER'S OFFICE

FOUND CONCRETE W.P.A. MONUMENT MISSING TOP PORTION, 0.9 FEET BELOW THE SURFACE OF ROW CROP FIELD.

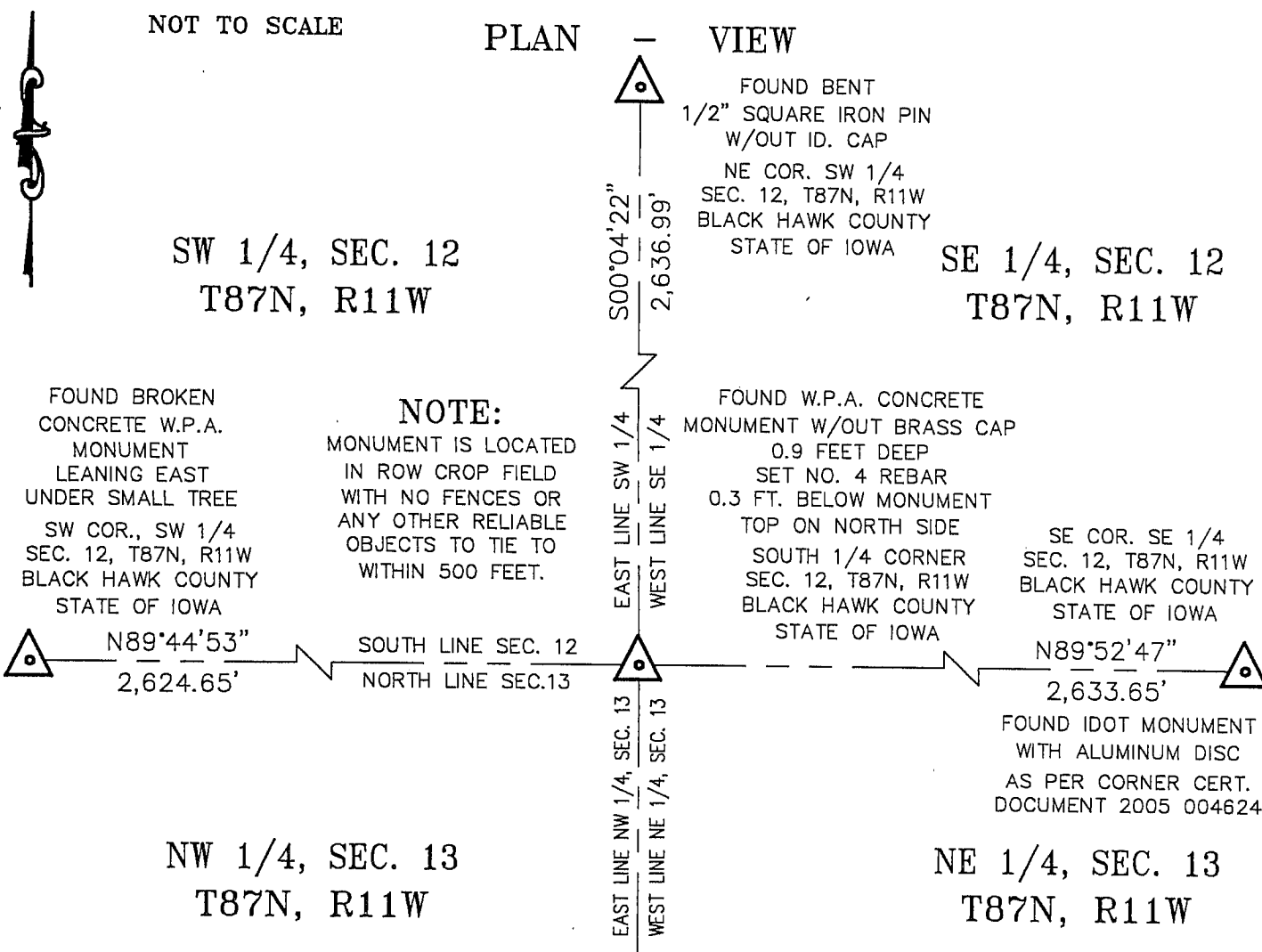
SET NO. 4 REBAR WITH YELLOW ID. CAP "IOWA - 9961" 0.3 FEET BELOW MONUMENT TOP ON NORTH SIDE

TO AID IN FUTURE LOCATION. FOR USE IN FIELD SURVEY IN SW 1/4, SECTION 12

NOT TO SCALE

PLAN

VIEW



I HEREBY CERTIFY THAT THIS LAND SURVEYING DOCUMENT WAS PREPARED AND RELATED SURVEY WORK WAS PERFORMED BY ME OR UNDER MY DIRECT PERSONAL SUPERVISION AND THAT I AM A DULY LICENSED LAND SURVEYOR UNDER THE LAWS OF THE STATE OF IOWA.

Kirk D. Eschliman DATE: 04/03/2006

KIRK D. ESCHLIMAN, P.L.S. IOWA LIC. NO. 9961
MY LICENSE RENEWAL DATE IS DECEMBER 31, 2005
PAGES OR SHEETS COVERED BY THIS SIGNATURE & SEAL: SHEET 1 OF 1

FOR: PEGGY L. FISCHELS
13203 WELLMAN ROAD
LA PORTE CITY, IOWA 50651

REQ. BY: PEGGY L. FISCHELS
LA PORTE CITY, IOWA



KESS & ASSOCIATES, INC.

PROFESSIONAL LAND SURVEYORS : 723 BROADWAY, WATERLOO, IOWA 50703-5811

DATE: 04/03/2006 C.A.D.D. FILE: 06A14SCC4.DWG PROJECT NO.: 06A14

List of corners to be indexed:

Corners	Section	Township	Range
S 1/4	12	T87N	R11W

