

PROOF FILED FOR RECORD APR 21, 2004, AT 1:00 P. M. FEE 1-5.00-5.00/

COMPARED

BLACK HAWK COUNTY RECORDER

PAUL HELLAND

Jeffrey P. Helland, 1107 Technology Parkway, Cedar Falls, Iowa 50613-6951, (319)-266-0161

UNITED STATES PUBLIC LAND SURVEY CORNER CERTIFICATE

LAND SURVEY MONUMENTS SITUATED IN SECTION NO. 11, TOWNSHIP NO. 87 NORTH, RANGE NO. 11 WEST OF THE FIFTH PRINCIPAL MERIDIAN, BLACK HAWK COUNTY, IOWA.

PREVIOUSLY RECORDED IN BOOK _____, PAGE _____

(SHOW REASON FOR PREPARING THIS CERTIFICATE, THE EVIDENCE AND DETAILED PROCEDURES USED IN ESTABLISHING THE CORNER POSITIONS AND MONUMENTATION FOUND OR PLACED.)

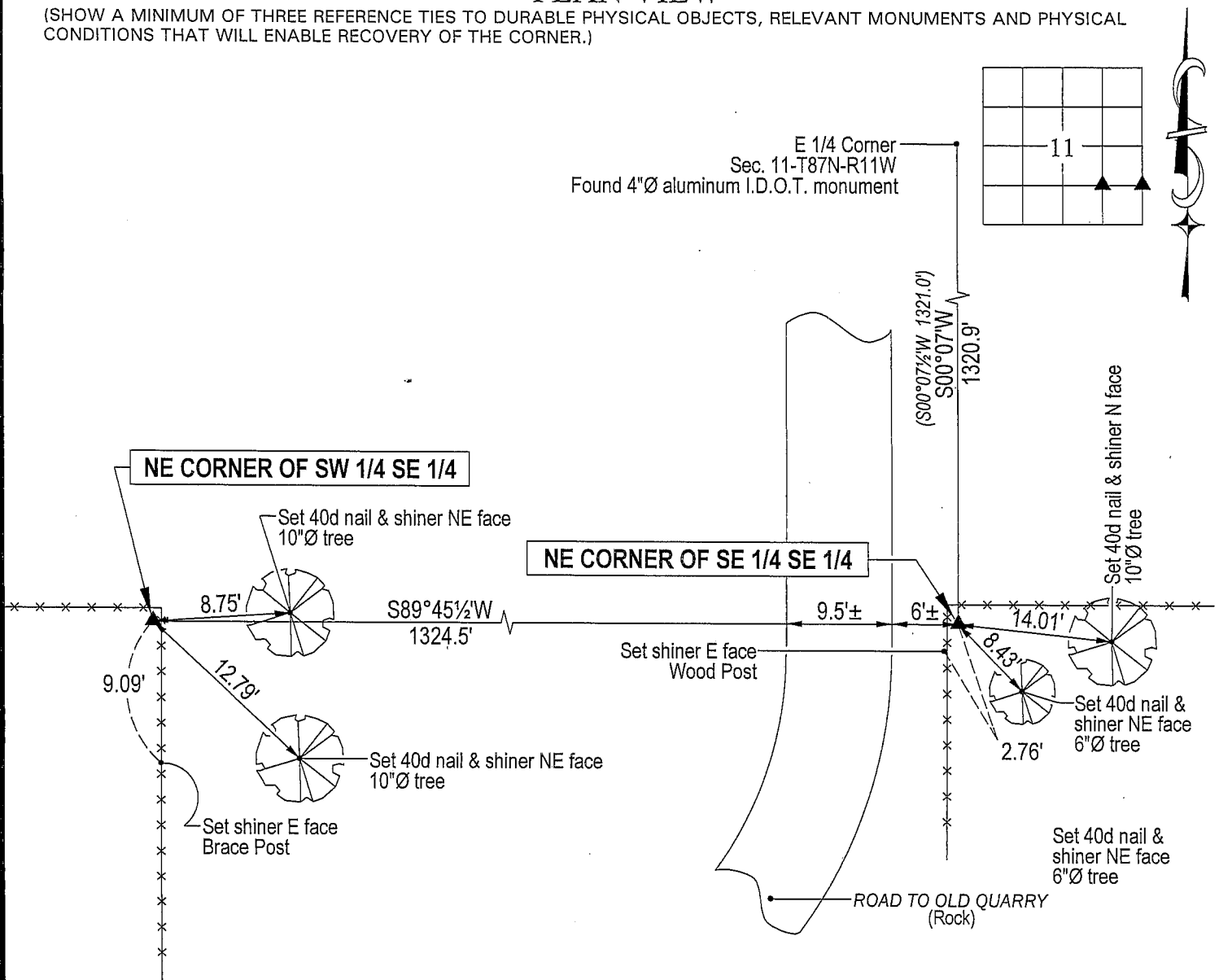
MONUMENT DESCRIPTION AND REMARKS:

No Corner Certificates on File. Survey completed in the NE 1/4 SE 1/4 of Sec. 11-T87N-R11W.

- NE CORNER OF SW 1/4 SE 1/4: No Black Hawk County Engineer nor I.D.O.T. reference ties exist. A stone was set or found at corner on 5/4/1891 per Auditor's Survey Record Bk 1 Pg 478. Started excavation around very old RR tie corner post. Found 8"Ø granite stone 1.4' deep at SW corner of said RR tie corner post. Set No. 4 rebar 0.55' East of stone for magnetic detection.
- NE CORNER OF SE 1/4 SE 1/4: No Black Hawk County Engineer nor I.D.O.T. reference ties exist. Found No. 5 rebar w/aluminum cap stamped "IOWA D.O.T." per 551 LD 658-659. Corner is 1.8' South & 1.0' East of corner post.

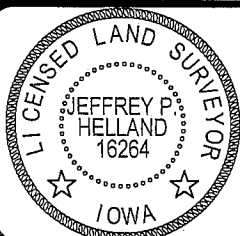
PLAN VIEW

(SHOW A MINIMUM OF THREE REFERENCE TIES TO DURABLE PHYSICAL OBJECTS, RELEVANT MONUMENTS AND PHYSICAL CONDITIONS THAT WILL ENABLE RECOVERY OF THE CORNER.)



HELLAND ENGINEERING & SURVEYING, LTD.
1107 Technology Parkway
Cedar Falls, Iowa 50613-6951
(319)-266-0161

(00.00) - Recorded As File Name: 04-145c2.drg



I hereby certify that this land surveying document was prepared and the related survey work was performed by me or under my direct personal supervision and that I am a duly licensed Land Surveyor under the laws of the State of Iowa.

Surveyor under the laws of the State of Iowa.
Jeffrey P. Helland 3/24/04
 Jeffrey P. Helland
 License Number 16264
 My license renewal date is December 31, 2005.
 All pages or sheets are covered by this seal except:

LIST CORNERS TO BE INDEXED

CORNER	SECTION	TOWNSHIP	RANGE
NE CORNER SW 1/4 SE 1/4	11	87N	11W
NE CORNER SE 1/4 SE 1/4	11	87N	11W

Rec.