

SC
MISC
INDEX
MARGIN
PROOF
COMPARE

FILED FOR RECORD Jan 23, 2001 AT 014735
2:00 P. M.; AND RECORDED IN BOOK 341
OF MISC PAGE 620
Patricia S. Lass RECORDER
FEE 1-5.00/
PAUL HELLAND

Paul H. Helland, 1107 Technology Parkway, Cedar Falls, Iowa 50613-6951, (319)-266-0161

UNITED STATES PUBLIC LAND SURVEY CORNER CERTIFICATE OF

LAND SURVEY MONUMENTS SITUATED IN SECTION NO. 11, TOWNSHIP NO. 87 NORTH, RANGE
NO. 11 WEST OF THE FIFTH PRINCIPAL MERIDIAN, BLACK HAWK COUNTY, IOWA.

PREVIOUSLY RECORDED IN BOOK _____, PAGE _____.

(SHOW REASON FOR PREPARING THIS CERTIFICATE, THE EVIDENCE AND DETAILED PROCEDURES USED IN ESTABLISHING THE
CORNER POSITIONS AND MONUMENTATION FOUND OR PLACED.)

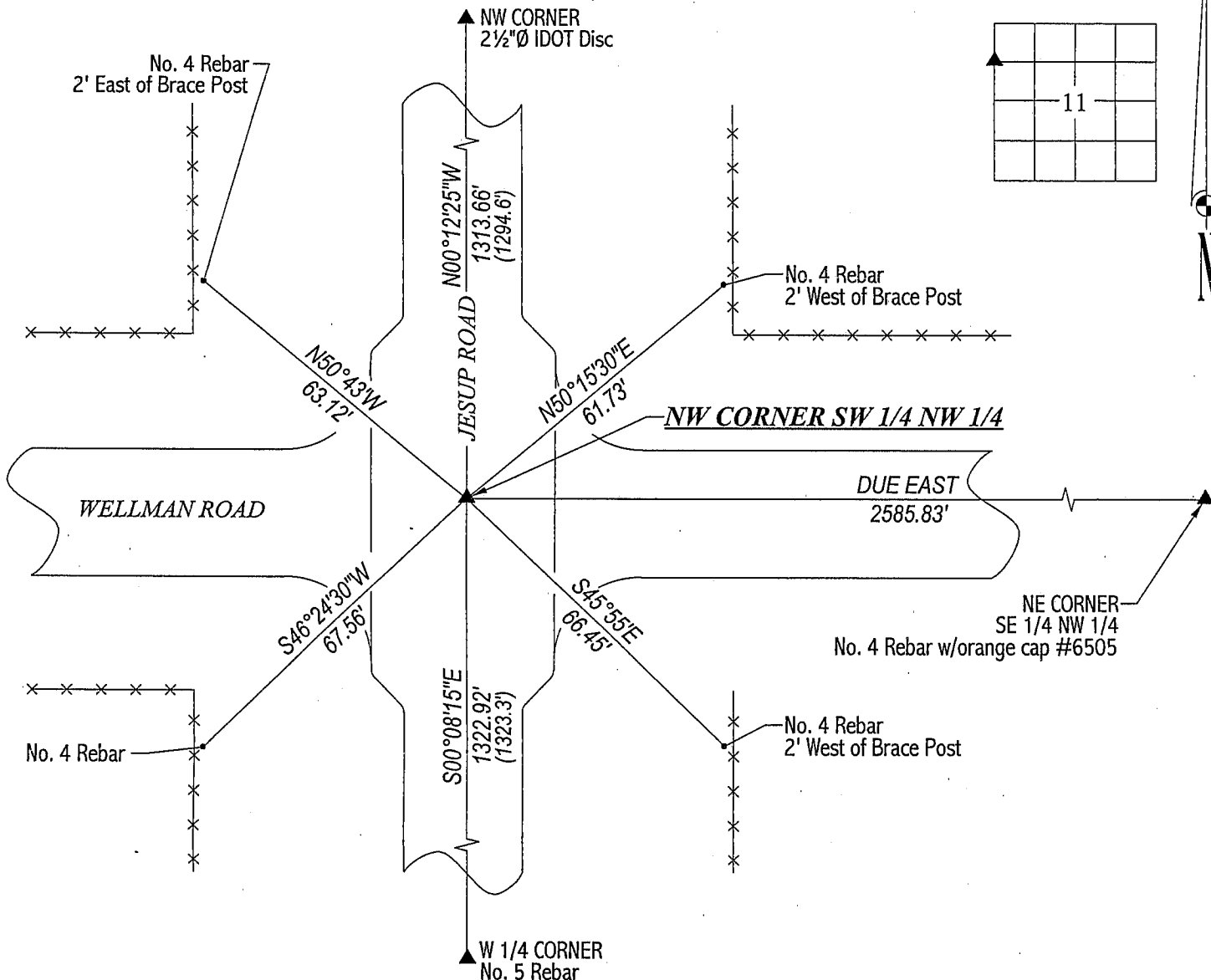
MONUMENT DESCRIPTION AND REMARKS:

SURVEY DONE IN SE 1/4 NW 1/4 OF SEC. 11-T87N-R11W.

NW CORNER OF SW 1/4 NW 1/4: Only one county reference tie found (East end of 24" RCP under Jesup Road). County ties do not state what was found or set. Youngerman chaining notes dated 10/10/1941 state he found a stone 1323.3' North of the W 1/4 Corner. The split of the North R.O.W. fence running East and the South R.O.W. fence running East is 1320.02' North of the W 1/4 Corner, whereas Youngerman distance was 1320.4'. Youngerman found the stone 2.9' North of said R.O.W. split. Set "Mag" nail in A.C.C. pavement 2.9' North of physical R.O.W. split and 0.8' East of a straight line between the W 1/4 Corner & NW Corner based on Youngerman's random line notes. Youngerman's distance of 1294.6' is in error for the West line of the NW 1/4 of the NW 1/4, based upon IDOT and Youngerman's distances for the Section to the North.

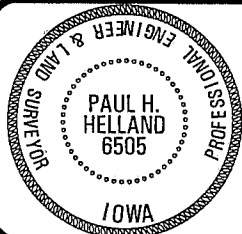
PLAN VIEW

(SHOW A MINIMUM OF THREE REFERENCE TIES TO DURABLE PHYSICAL OBJECTS, RELEVANT MONUMENTS AND PHYSICAL
CONDITIONS THAT WILL ENABLE RECOVERY OF THE CORNER.)



HELLAND ENGINEERING & SURVEYING, LTD.
1107 Technology Parkway
Cedar Falls, Iowa 50613-6951
(319)-266-0161

FILE NAME: 01-106C2.DRG



I hereby certify that this land surveying document was prepared
and the related survey work was performed by me or under my
direct personal supervision and that I am a duly licensed Land
Surveyor under the laws of the State of Iowa.

Paul H. Helland 1/19/01
Paul H. Helland
License Number 6505
My license renewal date is December 31, 2001.
All pages or sheets are covered by this seal except:

LIST CORNERS TO BE INDEXED

CORNER	SECTION	TOWNSHIP	RANGE
NW CORNER	11	87N	11W
SW 1/4 NW 1/4			