

MISC
INDEX 14
MARGIN
PROOF
COMPARE

BLACK HAWK COUNTY IOWA:SS
Filed for record Apr 15 2002
4:00 P M. and recorded in Book 346
of MISC Page 323
Patricia A. Loo Recorder
FEE 1-5.00/-
PAUL HELLAND

027802

Paul H. Helland, 1107 Technology Parkway, Cedar Falls, Iowa 50613-6951, (319)-266-0161

UNITED STATES PUBLIC LAND SURVEY CORNER CERTIFICATE OF

LAND SURVEY MONUMENTS SITUATED IN SECTION NO. 11, TOWNSHIP NO. 87 NORTH, RANGE
NO. 11 WEST OF THE FIFTH PRINCIPAL MERIDIAN, BLACK HAWK COUNTY, IOWA.
PREVIOUSLY RECORDED IN BOOK _____, PAGE _____.

(SHOW REASON FOR PREPARING THIS CERTIFICATE, THE EVIDENCE AND DETAILED PROCEDURES USED IN ESTABLISHING THE
CORNER POSITIONS AND MONUMENTATION FOUND OR PLACED.)

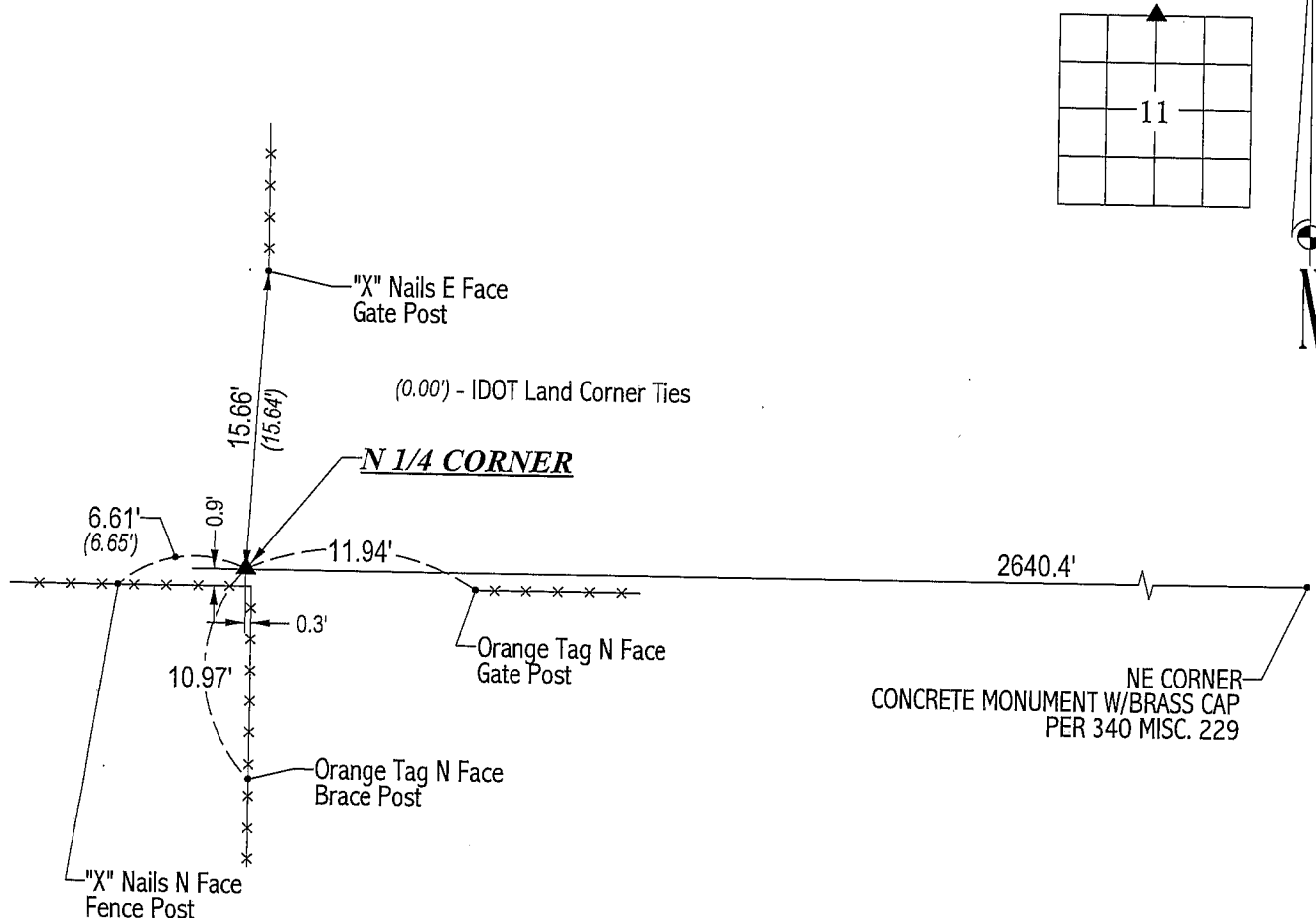
MONUMENT DESCRIPTION AND REMARKS:

SURVEY DONE IN W 1/2 NE 1/4 NE 1/4 OF SEC. 11-T87N-R11W.

N 1/4 CORNER: Found concrete monument w/brass cap per IDOT Land Corner Survey Ties. Concrete Monument is 0.8' deep.
Set No. 4 rebar on North side of concrete monument for magnetic detection.

PLAN VIEW

(SHOW A MINIMUM OF THREE REFERENCE TIES TO DURABLE PHYSICAL OBJECTS, RELEVANT MONUMENTS AND PHYSICAL
CONDITIONS THAT WILL ENABLE RECOVERY OF THE CORNER.)



HELLAND ENGINEERING & SURVEYING, LTD.
1107 Technology Parkway
Cedar Falls, Iowa 50613-6951
(319)-266-0161

FILE NAME: 02-133CC.DRG



I hereby certify that this land surveying document was prepared
and the related survey work was performed by me or under my
direct personal supervision and that I am a duly licensed Land
Surveyor under the laws of the State of Iowa.

Paul H. Helland 8/5/02
Paul H. Helland
License Number 6505
My license renewal date is December 31, 2003.
All pages or sheets are covered by this seal except:

CORNER	SECTION	TOWNSHIP	RANGE
N 1/4 CORNER	11	87N	11W