

Jeffrey P. Helland, 1107 Technology Parkway, Cedar Falls, Iowa 50613-6951, (319)-266-0161

UNITED STATES PUBLIC LAND SURVEY CORNER CERTIFICATE  
OFLAND SURVEY MONUMENTS SITUATED IN SECTION NO. 11, TOWNSHIP NO. 87 NORTH, RANGE NO. 11 WEST OF THE FIFTH PRINCIPAL MERIDIAN, BLACK HAWK COUNTY, IOWA.  
PREVIOUSLY RECORDED IN N/A

(SHOW REASON FOR PREPARING THIS CERTIFICATE, THE EVIDENCE AND DETAILED PROCEDURES USED IN ESTABLISHING THE CORNER POSITIONS AND MONUMENTATION FOUND OR PLACED.)

## MONUMENT DESCRIPTION AND REMARKS:

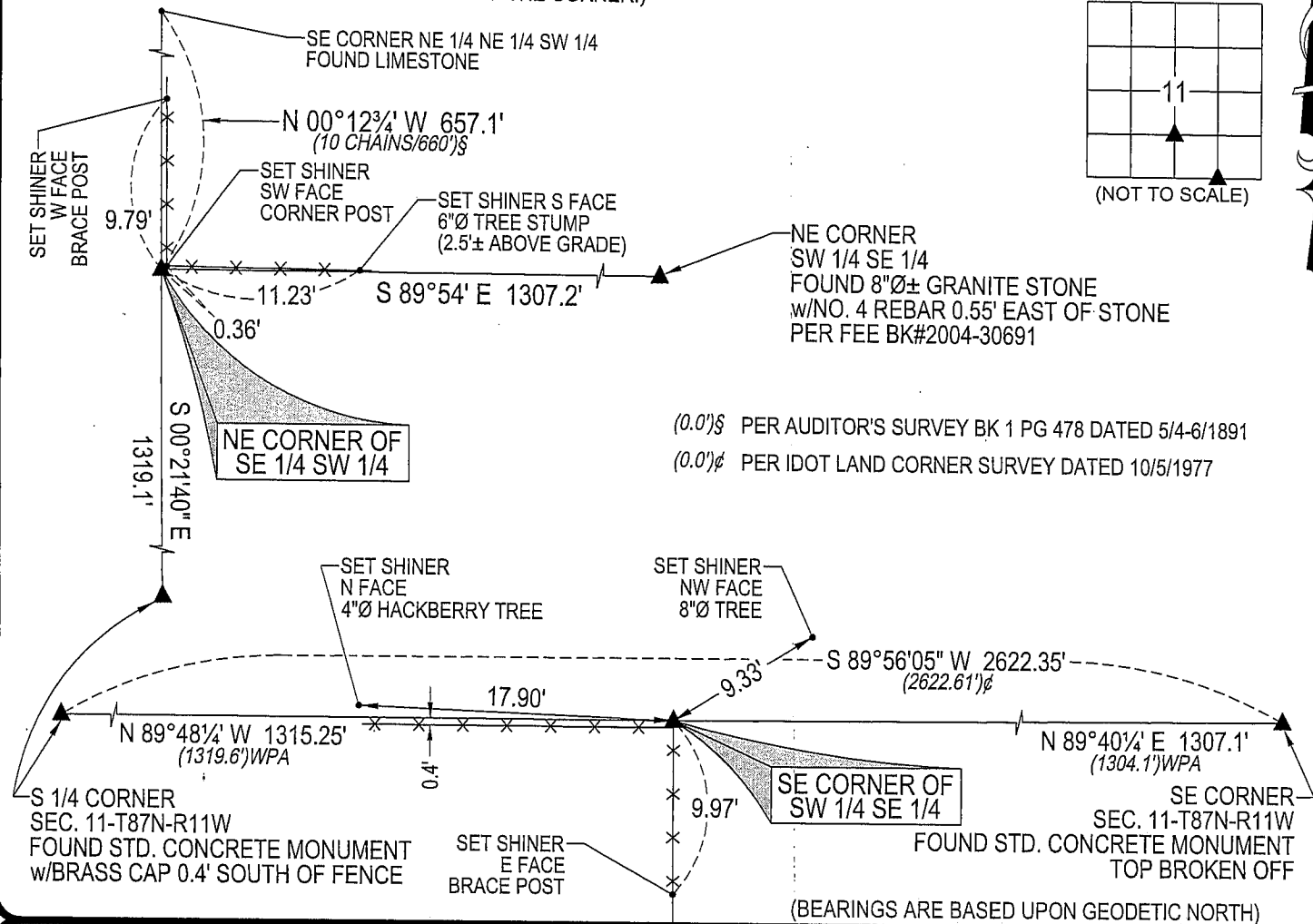
NO USPLSCC ON FILE. SURVEY COMPLETED IN THE S 1/2 OF SEC. 11-T87N-R11W.

→ **NE CORNER OF SE 1/4 SW 1/4:** NO BLACK HAWK COUNTY ENGINEER REFERENCE TIES AVAILABLE. AUDITOR'S SURVEY BK 1 PG 478 DATED 5/4-6/1891 BY JOHN BALL CALLS FOR [STONE] EXCAVATED & PROBED A 2' RADIUS CIRCLE AROUND EXISTING CORNER POST. FOUND SMALL BANDS OF LIMESTONE AROUND SAID CORNER POST, ALSO FOUND 2'0± (TOP VIEW, UNKNOWN DEPTH) LIMESTONE 4'± DEEP TO THE SOUTH OF SAID CORNER POST, DEEMED INDIGENOUS TO AREA, DID NOT UTILIZE. SET NO. 4 REBAR w/OPC #16264 AT SW CORNER OF SAID CORNER POST.

→ **SE CORNER OF SW 1/4 SE 1/4:** NO BLACK HAWK COUNTY ENGINEER REFERENCE TIES AVAILABLE. WPA CHAINING NOTES DATED 11/10/1939 REFERENCE [1/4 1/4 FENCE TO N & S.] PROBED AROUND CORNER POST & AT MIDPOINT OF A LINE BETWEEN THE S 1/4 CORNER AND THE SE CORNER, NO STONE FOUND. SET NO. 4 REBAR w/OPC #16264 ON NORTH SIDE OF 1'0± CORNER POST. CORNER AS ESTABLISHED IS 6.0' SOUTH OF SAID LINE BETWEEN THE S 1/4 CORNER AND THE SE CORNER, SAID WPA CHAINING NOTES (RANDOM LINE) HAS CORNER POST BEING 6.15' SOUTH OF SAID LINE.

## PLAN VIEW

(SHOW A MINIMUM OF THREE REFERENCE TIES TO DURABLE PHYSICAL OBJECTS, RELEVANT MONUMENTS AND PHYSICAL CONDITIONS THAT WILL ENABLE RECOVERY OF THE CORNER.)



(0.0')S PER AUDITOR'S SURVEY BK 1 PG 478 DATED 5/4-6/1891

(0.0')E PER IDOT LAND CORNER SURVEY DATED 10/5/1977

(BEARINGS ARE BASED UPON GEODETIC NORTH)



HELLAND ENGINEERING &amp; SURVEYING, LTD.

1107 Technology Parkway  
Cedar Falls, Iowa 50613-6951  
(319)-266-0161SHINER = 8D NAIL & 1 5/16"0 METAL SHINER  
OPC = PLASTIC CAP (O=ORANGE, R=RED, Y=YELLOW)

(00') RECORDED AS

FILE NAME: 07-117C1.DWG



I hereby certify that this land surveying document was prepared and the related survey work was performed by me or under my direct personal supervision and that I am a duly licensed Land Surveyor under the laws of the State of Iowa.

Jeffrey P. Helland 1/31/07  
Jeffrey P. Helland  
License Number 16264  
My license renewal date is December 31, 2007.  
All pages or sheets are covered by this seal except:

## LIST CORNERS TO BE INDEXED

CORNER	SECTION	TOWNSHIP	RANGE
NE CORNER SE 1/4 SW 1/4	11	87N	11W
SE CORNER SW 1/4 SE 1/4	11	87N	11W