

SC
MISC
INDEX
MARGIN
PROOF
COMPARE

014736
FILED FOR RECORD Jan 23, 2001 AT
2:00 P M., AND RECORDED IN BOOK 341
OF MISC PAGE 621
RECORDER
FEE 1-5.00/
PAUL HELLAND

Paul H. Helland, 1107 Technology Parkway, Cedar Falls, Iowa 50613-6951, (319)-266-0161

UNITED STATES PUBLIC LAND SURVEY CORNER CERTIFICATE OF

LAND SURVEY MONUMENTS SITUATED IN SECTION NO. 11, TOWNSHIP NO. 87 NORTH, RANGE
NO. 11 WEST OF THE FIFTH PRINCIPAL MERIDIAN, BLACK HAWK COUNTY, IOWA.

PREVIOUSLY RECORDED IN BOOK _____, PAGE _____.

(SHOW REASON FOR PREPARING THIS CERTIFICATE, THE EVIDENCE AND DETAILED PROCEDURES USED IN ESTABLISHING THE
CORNER POSITIONS AND MONUMENTATION FOUND OR PLACED.)

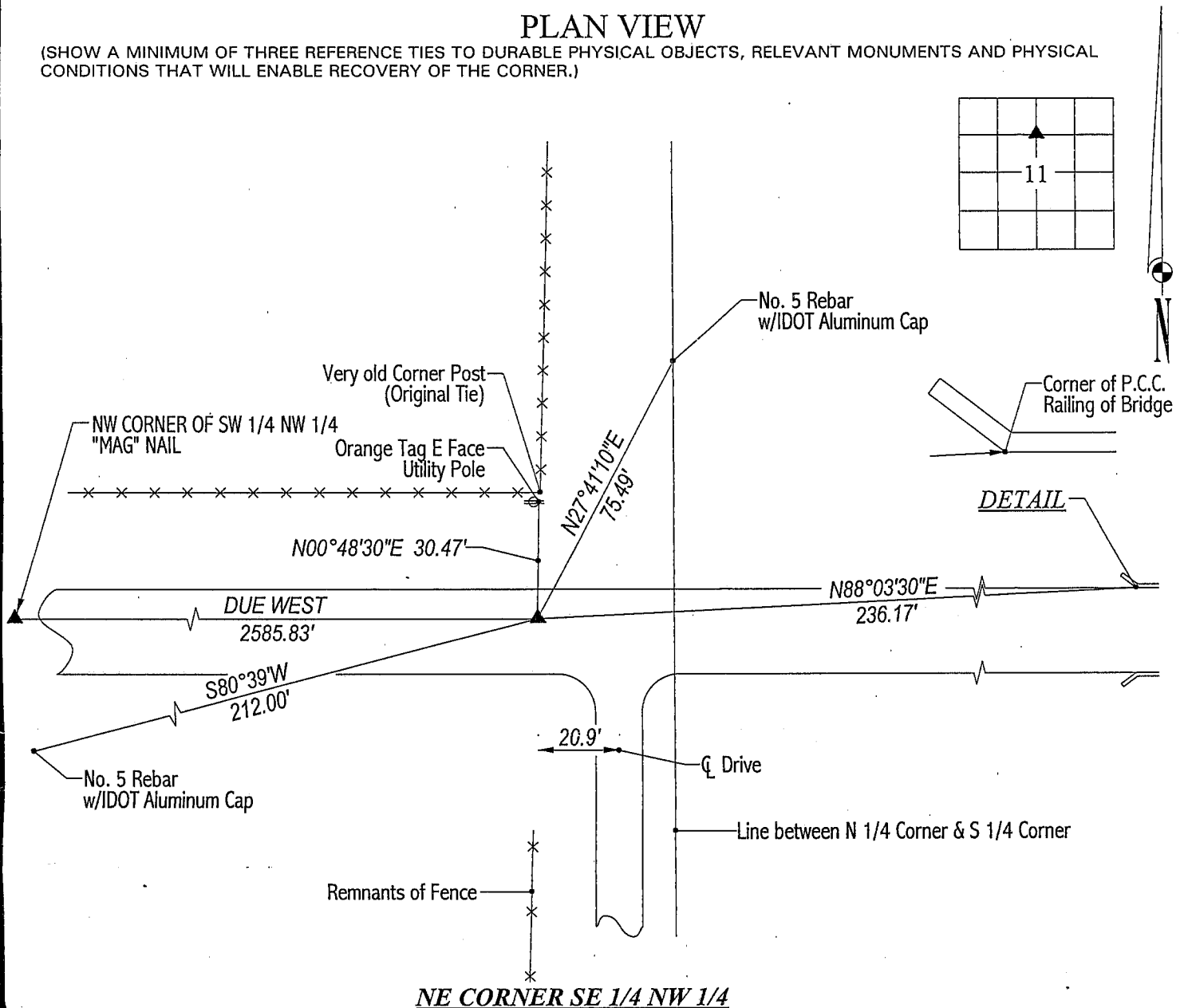
MONUMENT DESCRIPTION AND REMARKS:

SURVEY DONE IN SE 1/4 NW 1/4 OF SEC. 11-T87N-R11W.

NE CORNER OF SE 1/4 NW 1/4: County reference ties dated 11/20/1942 show a corner established. Ties show corner being 32.3' South of a corner post and fence running North. Position of the East line of said SE 1/4 NW 1/4 as established by the IDOT in 1979 is 35'± East of said fence running North. IDOT established line on a straight line between the N 1/4 Corner & S 1/4 Corner ignoring field evidence and position established 11/20/1942. Road was elevated 5-6' for interstate #380 to the East, unable to excavate. Found very old corner post (leaning NWly) to the North, set No. 4 rebar w/orange cap #6505 32.3' South of said corner post in line w/fence running North.

PLAN VIEW

(SHOW A MINIMUM OF THREE REFERENCE TIES TO DURABLE PHYSICAL OBJECTS, RELEVANT MONUMENTS AND PHYSICAL
CONDITIONS THAT WILL ENABLE RECOVERY OF THE CORNER.)

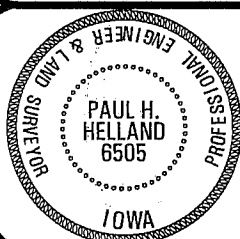


NE CORNER SE 1/4 NW 1/4



HELLAND ENGINEERING & SURVEYING, LTD.
1107 Technology Parkway
Cedar Falls, Iowa 50613-6951
(319)-266-0161

FILE NAME: 01-106C3.DRG



I hereby certify that this land surveying document was prepared
and the related survey work was performed by me or under my
direct personal supervision and that I am a duly licensed Land
Surveyor under the laws of the State of Iowa.

Paul H. Helland 11/23/01
Paul H. Helland
License Number 6505
My license renewal date is December 31, 2001.
All pages or sheets are covered by this seal except:

LIST CORNERS TO BE INDEXED
CORNER SECTION TOWNSHIP RANGE
NE CORNER 11 87N 11W
SE 1/4 NW 1/4