

Jeffrey P. Helland

BLACK HAWK COUNTY RECORDER

PAUL HELLAND

Jeffrey P. Helland, 1107 Technology Parkway, Cedar Falls, Iowa 50613-6951, (319)-266-0161

UNITED STATES PUBLIC LAND SURVEY CORNER CERTIFICATE
OFLAND SURVEY MONUMENTS SITUATED IN SECTION NO. 11, TOWNSHIP NO. 87 NORTH, RANGE
NO. 11 WEST OF THE FIFTH PRINCIPAL MERIDIAN, BLACK HAWK COUNTY, IOWA.

PREVIOUSLY RECORDED IN BOOK _____, PAGE _____.

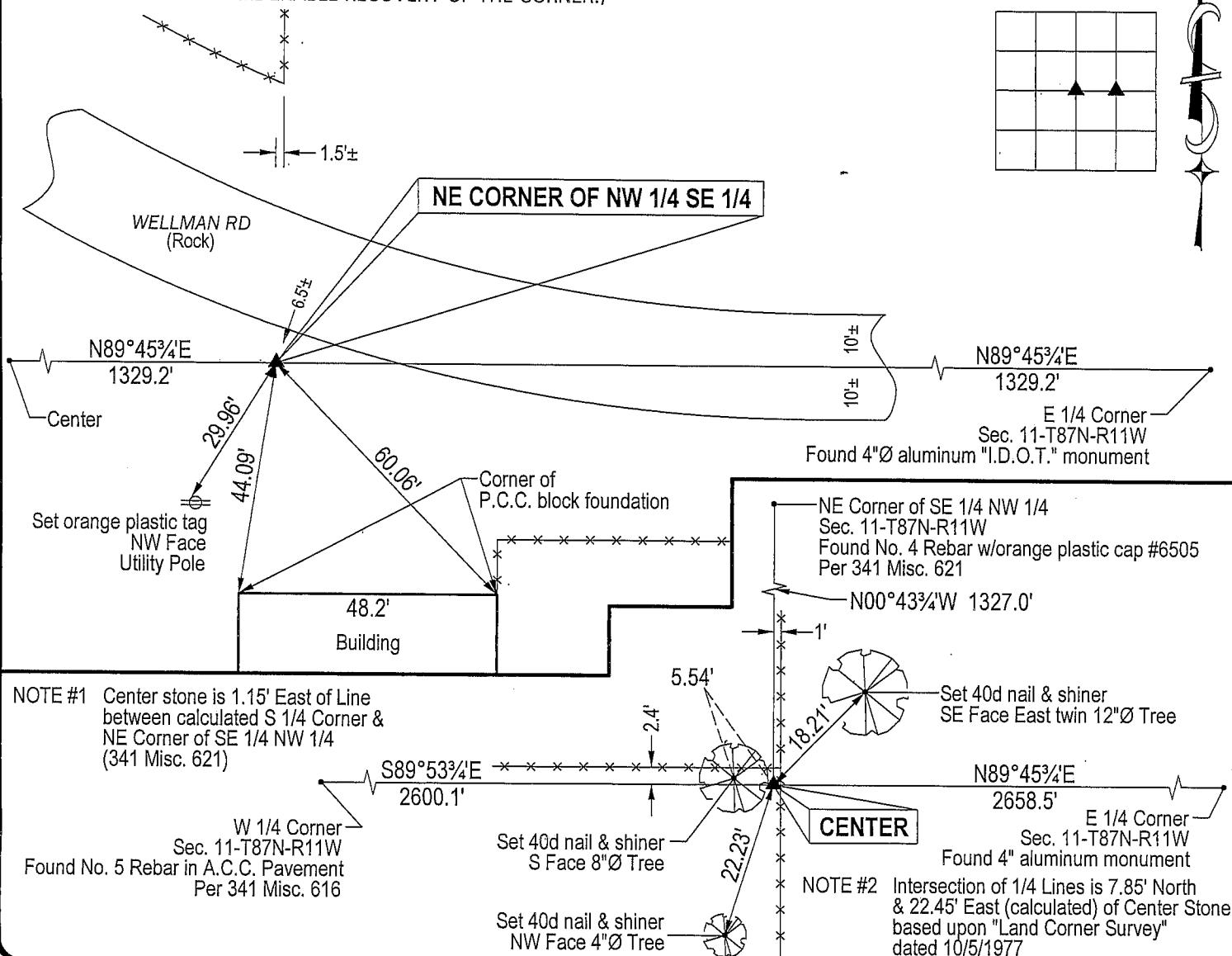
(SHOW REASON FOR PREPARING THIS CERTIFICATE, THE EVIDENCE AND DETAILED PROCEDURES USED IN ESTABLISHING THE
CORNER POSITIONS AND MONUMENTATION FOUND OR PLACED.)

MONUMENT DESCRIPTION AND REMARKS:

No Corner Certificates on File. Survey completed in the NE 1/4 SE 1/4 of Sec. 11-T87N-R11W.

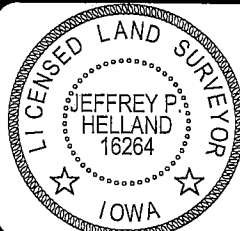
- CENTER: No Black Hawk County Engineer nor I.D.O.T. reference ties exist. A stone was set or found at Center on 5/4/1891 per Auditor's Survey Record Bk 1 Pg 478. Started excavation around very old RR tie corner post. Found 0.8'±x0.3' limestone lying flat, top of limestone is 0.4' deep. Drilled hole and set "mag" nail in center of limestone and set No. 4 rebar 0.55' North & 0.05' East of said "mag" nail for magnetic detection.
- NE CORNER of NW 1/4 SE 1/4: No Black Hawk County Engineer nor I.D.O.T. reference ties exist. A stone was set or found at corner on 5/4/1891 per Auditor's Survey Record Bk 1 Pg 478. Stone obliterated w/excavation of ditch for road. Set No. 4 rebar w/orange plastic cap #16264 @ midpoint of line between the Center (limestone) and E 1/4 Corner.

PLAN VIEW

(SHOW A MINIMUM OF THREE REFERENCE TIES TO DURABLE PHYSICAL OBJECTS, RELEVANT MONUMENTS AND PHYSICAL
CONDITIONS THAT WILL ENABLE RECOVERY OF THE CORNER.)HELLAND ENGINEERING & SURVEYING, LTD.
1107 Technology Parkway
Cedar Falls, Iowa 50613-6951
(319)-266-0161

(00.00') - Recorded As

File Name: 04-145c1.drg

I hereby certify that this land surveying document was prepared
and the related survey work was performed by me or under my
direct personal supervision and that I am a duly licensed Land
Surveyor under the laws of the State of Iowa.*Jeffrey P. Helland* 3/24/04
Jeffrey P. Helland
License Number 16264
My license renewal date is December 31, 2005.
All pages or sheets are covered by this seal except:

LIST CORNERS TO BE INDEXED

CORNER	SECTION	TOWNSHIP	RANGE
CENTER	11	87N	11W
NE CORNER NW 1/4 SE 1/4	11	87N	11W