

BLACK HAWK COUNTY ENGINEER

PREPARED BY: BLACK HAWK COUNTY ENGINEERS OFFICE PH.# (319) 833-3008 SLSI 9-94  
316 E. FIFTH STREET, ROOM 211 WATERLOO, IOWA 50703 FAX.# (319) 833-3139 CERT 12-96

UNITED STATES PUBLIC LAND SURVEY CORNER CERTIFICATE OF  
Land Survey Monuments situated in Section 10, Township 87 N,  
Range 11 W, of the Fifth Principal Meridian, BLACK HAWK County, Iowa.  
Previously recorded in Misc. Book 341, Page 616, in County Recorder's Office.

(Show reason for preparing this certificate, the evidence and detailed procedures used in establishing the corner positions and monumentation found or placed.)

Monument Description and Remarks: FOUND 1/2" REBAR PRIOR TO RE-SURF.  
w/ NEW 4.5" ACC MAT OVERLAY, & ALIGNED w/ FENCE BOTH EAST/ WEST.  
CORNER TEMP. REFERENCED, AND RESET w/ #5 REBAR LOCATED AS DENOTED.  
EXISTING REF. TIES PER CO. ENGINEERS (FIELD) BK. #1000 DESTROYED.  
RE-EST. CORNER LOCATED 0.70' EAST OF C.L. ACC JOINT.  
CORNER FILED TO UPDATE EXISTING RECORD, PER PLS. #6505.

Page #1 of 2

PLAN - VIEW

(Show a minimum of three reference ties to durable physical objects, relevant monuments and physical conditions that will enable recovery of the corner.)

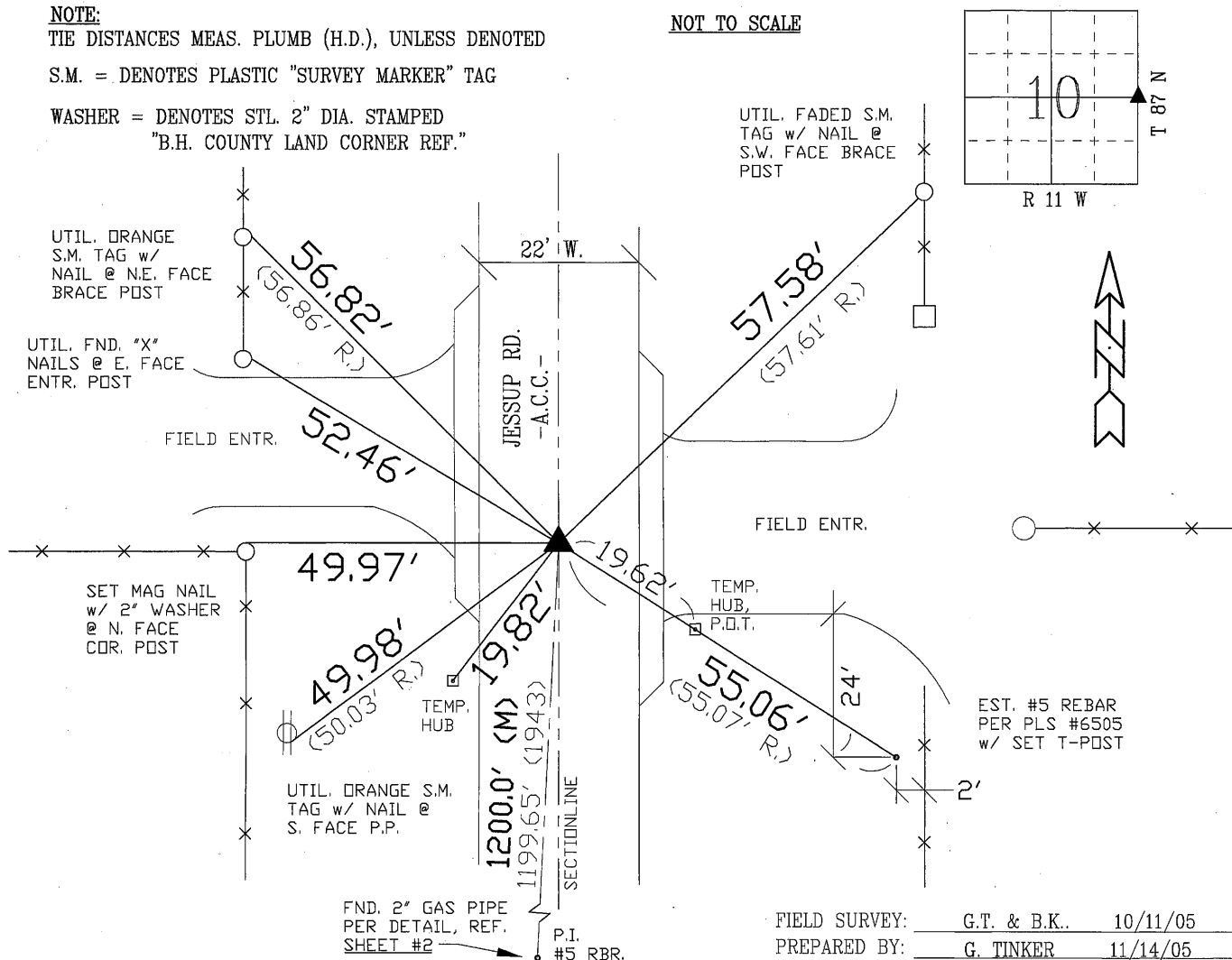
NOTE:

TIE DISTANCES MEAS. PLUMB (H.D.), UNLESS DENOTED

NOT TO SCALE

S.M. = DENOTES PLASTIC "SURVEY MARKER" TAG

WASHER = DENOTES STL. 2" DIA. STAMPED  
"B.H. COUNTY LAND CORNER REF."



CERTIFICATION

I hereby certify that this land surveying document was prepared and the related survey work was performed by me or under my direct personal supervision and that I am a duly licensed Land Surveyor under the laws of the State of Iowa.

*Richard L. King* 11/16/05  
Richard L. King (date)

License Number 3890

My license renewal date is December 31, 2005

Pages or sheets covered by this seal:

pp. #1 AND #2 of this Corner Cert.

LIST CORNERS TO BE INDEXED

Corner	Section	Township	Range
E. 1/4	10	87 N	11 W
W. 1/4	11	87 N	11 W

Page #1 of 2

PREPARED BY: BLACK HAWK COUNTY ENGINEERS OFFICE  
316 E. FIFTH STREET, ROOM 211 WATERLOO, IOWA 50703

PH.# (319) 833-3008  
FAX.# (319) 833-3139

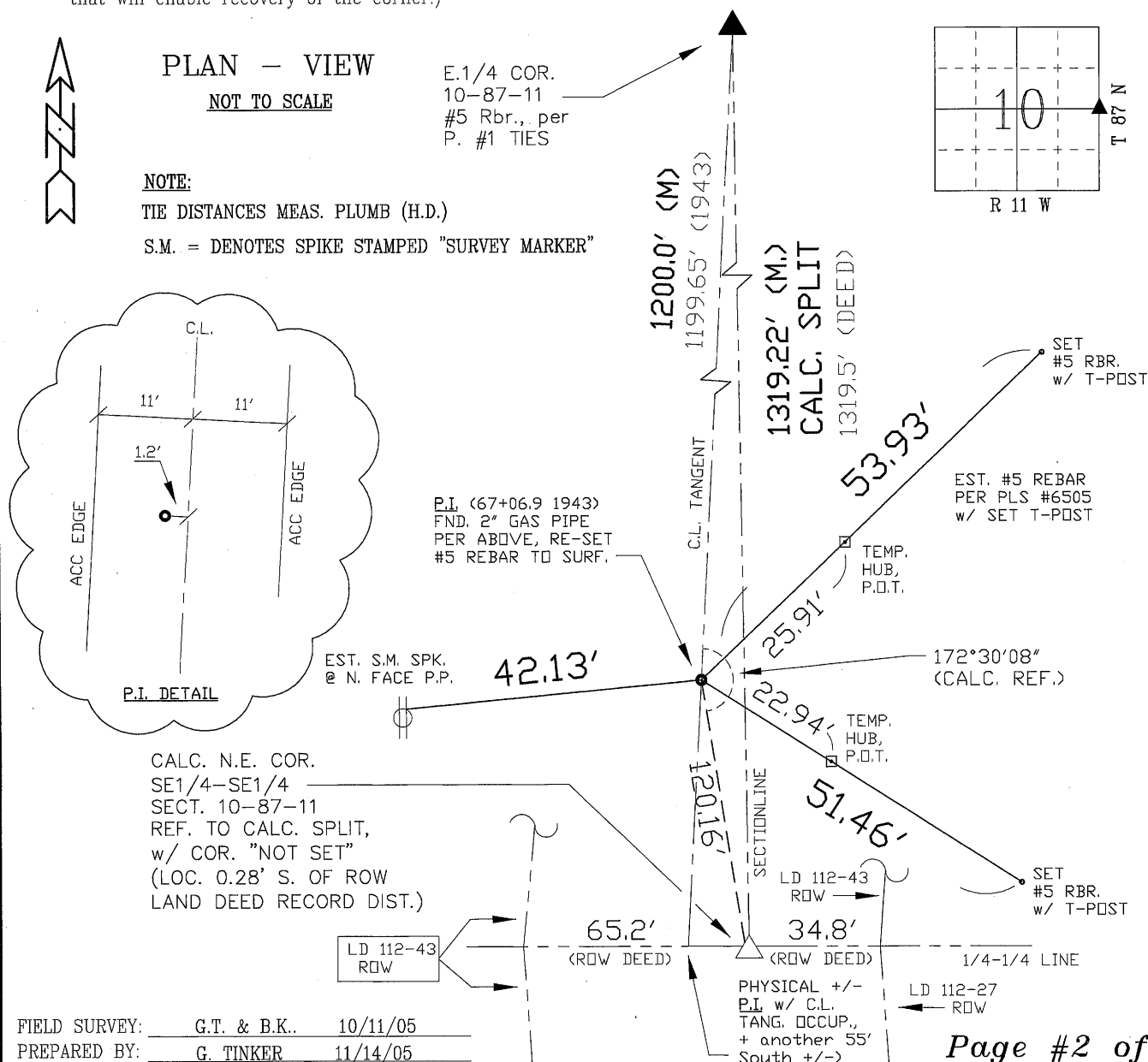
SLSI 9-94  
CERT 12-96

UNITED STATES PUBLIC LAND SURVEY CORNER CERTIFICATE OF  
Land Survey Monuments situated in Section 10, Township 87 N,  
Range 11 W, of the Fifth Principal Meridian, BLACK HAWK County, Iowa.  
Previously recorded in Misc. Book 341, Page 616, in County Recorder's Office.

(Show reason for preparing this certificate, the evidence and detailed procedures used in establishing the corner positions and monumentation found or placed.)

Monument Description and Remarks: CONTINUED: Page #2 of 2  
PAGE #2 REFERENCE TIES TO P.I. FOUND SOUTH OF SAID SECTION CORNER.  
FOUND P.I. BEING 2" GAS PIPE LOCATED 2.5' DEEP FROM 1943 TRANSIT  
NOTES IN BK. #265 p. 56 OF CO. ENGINEERS FIELD BOOK RECORDS.  
TRUED & SET 28"x#5 REBAR +/- FLUSH TO EXIST. ACC SURFACE.  
AFTER SAID RESURF. PROJECT, RESET w/ 5"x#5 REBAR AND TIED AS SHOWN.  
NOTE: P.I. REFERENCE INCLUDED WITH COR. TIE FOR PUBLIC RECORD OF  
GEOM. HISTORY. R.O.W PER INDEX RECORD DOES NOT FOLLOW GEOM. CURVES  
OF ROADWAY DENOTED PER AS-BUILT PLAN INFORMATION. TIE TO 1/16 COR.  
PROVIDED ONLY FOR R.O.W. DEED CORNER REFERENCE. GEOM. C.L. OCCUPATION  
OF JESUP RD. BETTER DEFLECTS AT A POINT WHERE FOUND TANG. WOULD  
EXTEND SOUTH AND INTERSECT WITH 1/4-1/4 SECT. LINE, YET NO P.I. FND.  
THIS GEOM. DISCREPANCY WILL BE CONSIDERED IN ANY FUTURE ROADWAY  
DEVELOPMENT PLANS, AND IS PROVIDED FOR ANY FUT. ROW DEED COR.'S.

(Show a minimum of three reference ties to durable physical objects, relevant monuments and physical conditions that will enable recovery of the corner.)



Page #2 of 2