



Doc ID: 012045130001 Type: GEN
Recorded: 12/06/2023 at 02:54:43 PM
Fee Amt: \$7.00 Page 1 of 1
Black Hawk County Iowa
SANDIE L. SMITH RECORDER

File 2024-00007415

PREPARED BY / RETURN TO: JEFFREY R. HUTTON, P.L.S. * 407 SYCAMORE ST. LA PORTE CITY, IOWA 50651 * (319)342-4774

UNITED STATES PUBLIC LAND SURVEY CORNER CERTIFICATE
OF

Land Survey Monuments situated in Section 9, Township 87N, Range 11W of the Fifth Principal Meridian, BLACK HAWK County, Iowa, previously recorded in N/A
in County Recorder's Office. (Book, Page, Document Number, etc.)

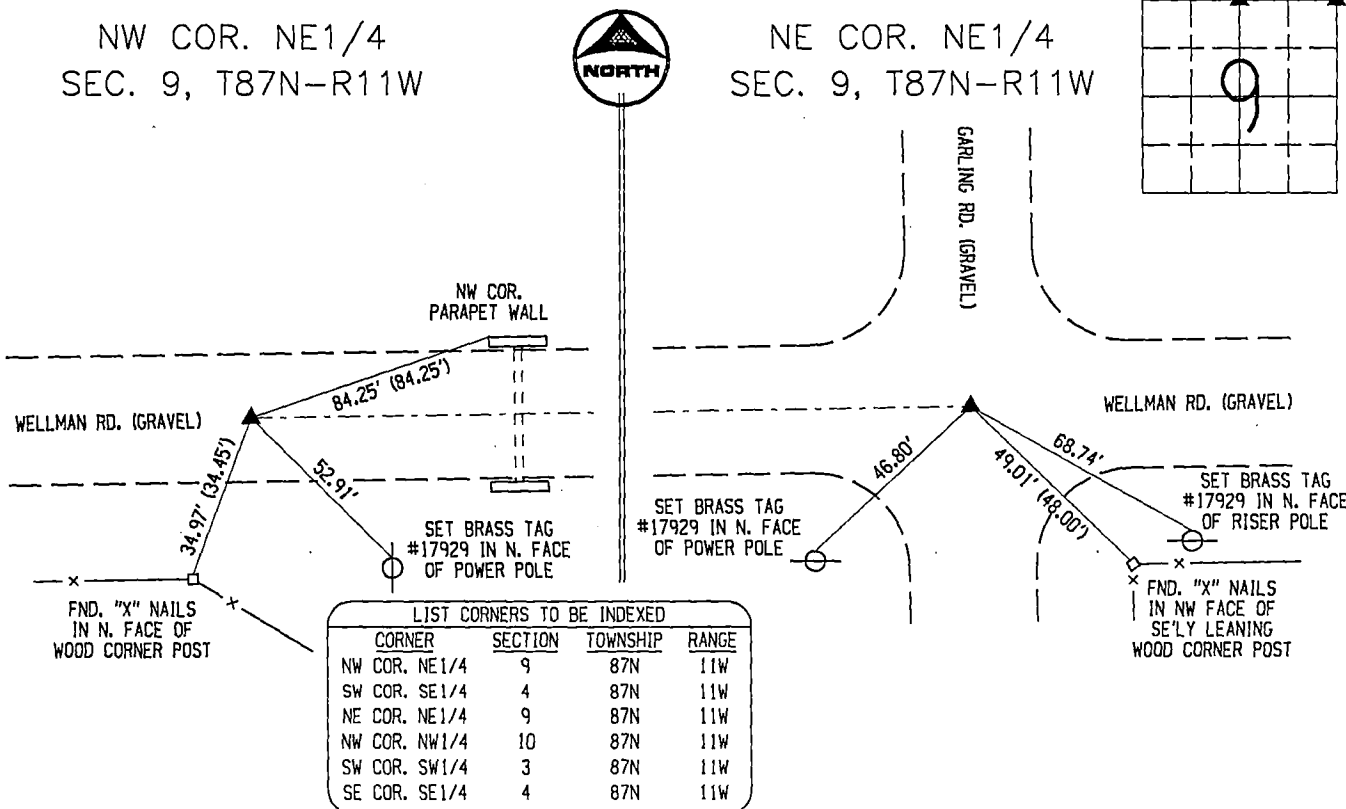
Monument Description and Remarks:

NW CORNER NE1/4: SEARCHED USING METAL DETECTOR AND TIES SHOWN ON A LAND CORNER SURVEY CREATED FOR IOWA D.O.T. BLACK HAWK COUNTY PROJECT No. 1-380-7(16)--01-07. FOUND DAMAGED 4" SQUARE CONCRETE MONUMENT WITH MAG NAILS AT N. AND S. FACES. OCCUPYING THE TOP CENTER OF SAID MONUMENT. ACCEPTED AS CORNER. SET ADDITIONAL TIES AND TIED OUT.

NE CORNER NE1/4: SEARCHED ROAD INTERSECTION W/ METAL DETECTOR USING TIES SHOWN ON A LAND CORNER SURVEY CREATED FOR IOWA D.O.T. BLACK HAWK COUNTY PROJECT No. 1-380-7(16)--01-07. FOUND 3/8" IRON PIN. ORIGINAL TIES OBLITERATED. ACCEPTED AS CORNER. SET TIES AND TIED OUT.

NW COR. NE1/4
SEC. 9, T87N-R11W

NE COR. NE1/4
SEC. 9, T87N-R11W



I hereby certify that this land surveying document was prepared and the related survey work was performed by me or under my direct personal supervision and that I am a duly licensed Land Surveyor under the laws of the State of Iowa.

Jeffrey R. Hutton 6 Dec 2023
JEFFREY R. HUTTON LICENSE NO. 17929 DATE

My license is subject to renewal on December 31, 2023.
This certification applies only to the page upon which it appears.

REASON FOR PREPARING CERTIFICATE:

- ☒ A) THERE IS NO CERTIFICATE FOR THE CORNER ON FILE WITH THE RECORDER OF THE COUNTY IN WHICH THE CORNER IS LOCATED.
- ☐ B) CORNER POSITION DIFFERS FROM THAT SHOWN IN THE PUBLIC RECORDS OF THE COUNTY IN WHICH THE CORNER IS LOCATED.
- ☐ C) THE CORNER MONUMENT HAS BEEN REPLACED OR MODIFIED.
- ☐ D) THE REFERENCE TIES REFERRED TO IN AN EXISTING PUBLIC RECORD ARE INCORRECT.

LEGEND	SHEET NAME U.S. LAND SURVEY CORNER CERT.		PROJECT NAME HARTING FARMSTEAD SPLIT	SCALE NTS	PROJECT No. 231066
	DATE 11/27/2023	DRAWN BY MJWH			