

File **2013-00014966**

PREPARED BY: BLACK HAWK COUNTY ENGINEERS OFFICE  
316 E. FIFTH STREET, ROOM 211 WATERLOO, IOWA 50703

PH.# (319) 833-3008  
FAX.# (319) 833-3139

SLSI 9-94  
BHC0 03-09

## UNITED STATES PUBLIC LAND SURVEY CORNER CERTIFICATE OF

Land Survey Monuments situated in Section 8, Township 87 N,  
Range 11 W, of the Fifth Principal Meridian, BLACK HAWK County, Iowa.  
Previously recorded in Misc. Book N/A, Page N/A, in County Recorder's Office.

(Show reason for preparing this certificate): There is No Certificate for the corner on file with County Recorder, per  
Ia. Code 355.11(1)(a).

(Evidence and detailed procedures used in establishing the corner position(s) and monumentation found or placed.)

Monument Description and Remarks: N. 1/4 COR.

NO CURRENT CERT. OF RECORD. CORNER REFERENCED PER R.O.W. ACQUISITION PLAT FOR CANFIELD ROAD INTERSECTION IMPROVEMENT PROJECT #L-2996. FOUND STD. WPA C.M. WITH BRASS CAP @ 6" DEPTH PER REMAINING CO. ENG. TIE REFERENCES OF RECORD, AS SHOWN. CORNER ALIGNED WITH EXISTING FENCES TO BOTH NORTH & SOUTH @ TIME OF RECOVERY. W.P.A. RECORD TIES DTD. 5/15/1939 DETAIL "FOUND LIMESTONE 2"x6"x14" AND BLACK GRANITE 7"x10"x16", BEING LOWERED IN PLACE AND SET C/M STAMPED  $\frac{5}{8}$ " ELEVATION DENOTED BELOW AT TOP OF FOUND C.M., AS OBSERVED. HISTORICAL WPA RANDOM LINE (R/L) MEAS. CALLS CORNER AT "2.1' S. OF R/L", WITH N.W. CORNER "ON R/L" AND N.E. CORNER @ "10.0' N. OF R/L".

### PLAN VIEW

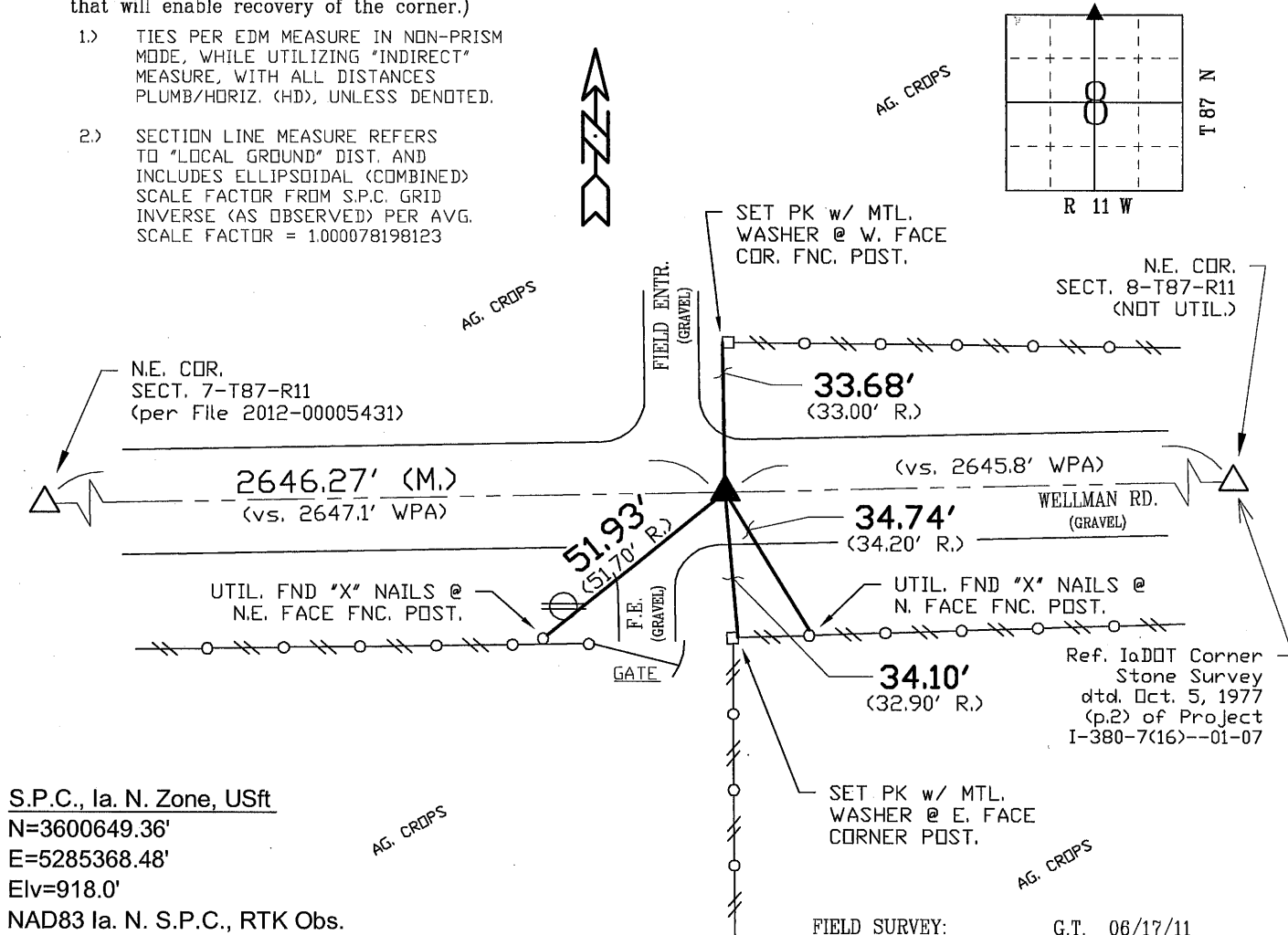
**"NOT TO SCALE"**

BHco Hist. Ties: BK. #1001 p.8 T87-R11

FIELD BOOK: Ties per Topcon 7003j #Z0115

(Show a minimum of three reference ties to durable physical objects, relevant monuments and physical conditions that will enable recovery of the corner.)

- 1.) TIES PER EDM MEASURE IN NON-PRISM MODE, WHILE UTILIZING "INDIRECT" MEASURE, WITH ALL DISTANCES PLUMB/HORIZ. (HD), UNLESS DENOTED.
- 2.) SECTION LINE MEASURE REFERS TO "LOCAL GROUND" DIST. AND INCLUDES ELLIPSOIDAL (COMBINED) SCALE FACTOR FROM S.P.C. GRID INVERSE (AS OBSERVED) PER AVG. SCALE FACTOR = 1.000078198123



S.P.C., Ia. N. Zone, USft

N=3600649.36'

E=5285368.48'

E|v=918.0'

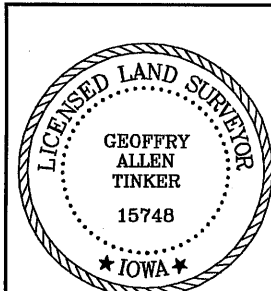
NAD83 Ia. N. S.P.C., RTK Obs.

(Vert. per NGVD29 w/ Geoid 2003)

FIELD SURVEY: G.T. 06/17/11

PREPARED BY: S.S. & G.T. 1/17/13

## ***CERTIFICATION***



I hereby certify that this land surveying document was prepared and the related survey work was performed by me or under my direct personal supervision and that I am a duly licensed Land Surveyor under the laws of the State of Iowa.

Geoffrey Allen Tinker 01/17/2013  
Geoffrey Allen Tinker (date)

License Number 15748

My license renewal date is December 31, 2014

Pages or sheets covered by this seal:

This Land Corner Certificate Only.

### LIST CORNERS TO BE INDEXED

<u>Corner</u>	<u>Section</u> -	<u>Township</u> -	<u>Range</u>
N. 1/4 Cor.	8	87 N	11 W
S. 1/4 Cor.	5	87 N	11 W

## INDEX OF ABBREVIATIONS

(M) = "Measured" Dimension	"NP" = Reflectless EDM Meas.
(P) = "Platted" Dimension	"MLM" = Indirect Measure
(R) = "Record" Dimension	"CM" = Concrete Monument
(C) = "Calculated" Dimension	"SM" = Survey Marker Spike/Tag
"GGS" = Iowa Geodetic Survey	"PK" = PK/MAG Nail Brand Style
"WPA" = Works Progress Admin. Survey	
"G" = per George Miller Survey (BHco Surveyor 1858-1860)	
"B" = per John Ball Survey (BHco Surveyor 1866-1891)	
"N" = per Nathan Barber Survey (BHco Surveyor 1908-1931)	