

File **2012-00005431**

PH.# (319) 833-3008
FAX.# (319) 833-3139

SLSI 9-94
BHC0 03-09

(Show reason for preparing this certificate): The corner monument has been Replaced or Modified, per Ia. Code 355.11(1)(c)

(Evidence and detailed procedures used in establishing the corner position(s) and monumentation found or placed.)

Monument Description and Remarks: N.E. CORNER

CORNER RESET FOR COLD-IN-PLACE RECYL. & H.M.A. RESURF. PROJECT LFM-121--7X-07.
PRIOR TO RESURF. PROJECT, FOUND 5/8" IRON PIN PER BHCO. HIST. TIES (DTD. 1984) AND
TEMP. REF. COR. LOCATION PER RTK GPS. AFTER 4" DP. MILL (RECYCLE), FND. 5/8"
SMOOTH STEEL PIN x6"L. (BENT) @ ± RTK REFERENCE LOCATION. REMOVED & EXCAVATED
TO ±0.70' DEEP, w/ SOUNDING REMAINING @ LOCATION. PVMT. RESURFACED w/+3" H.M.A.
SURFACE COURSE, THEN RESET CORNER w/ 5/8" (#5) x 6"L. REBAR LOCATED @ 0.10' EAST
OF C.L. H.M.A. JNT. AND ALIGNED w/ C.L. SIDE ROAD TO EAST. DELF. (CORNER) ANGLE
DENOTED FOR SECTION LINE TO N./S. PER COGO OF RTK GPS MEAS. CORNERS (AS
OBSERVED).

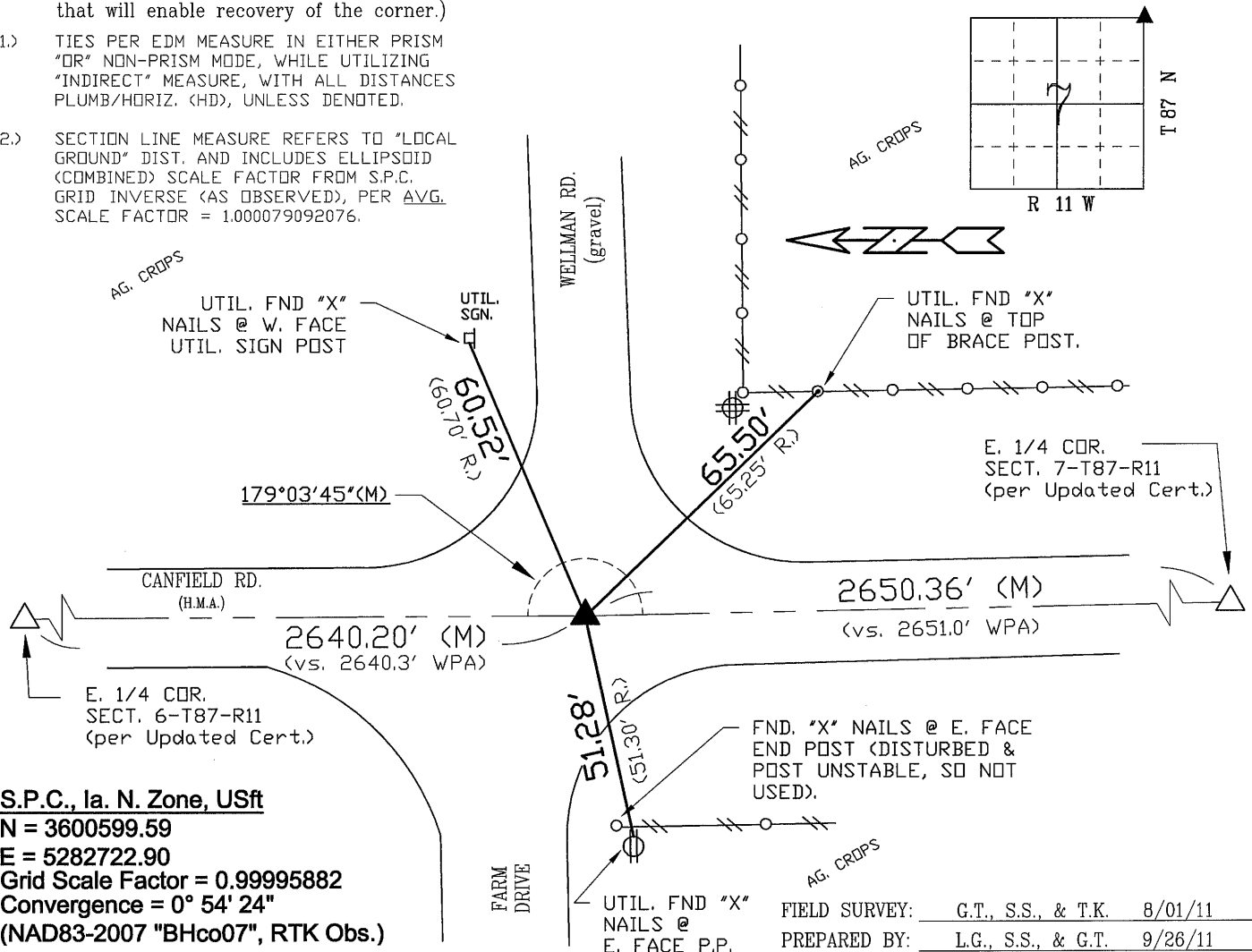
"NOT TO SCALE"

BHco Hist. Ties: BK. #1000 p. 07 T87-R11

FIELD BOOK: Ties per Topcon 7003i #Z0115

(Show a minimum of three reference ties to durable physical objects, relevant monuments and physical conditions that will enable recovery of the corner.)

- 1.) TIES PER EDM MEASURE IN EITHER PRISM "OR" NON-PRISM MODE, WHILE UTILIZING "INDIRECT" MEASURE, WITH ALL DISTANCES PLUMB/HORIZ. (HD), UNLESS DENOTED.
- 2.) SECTION LINE MEASURE REFERS TO "LOCAL GROUND" DIST. AND INCLUDES ELLIPSOID (COMBINED) SCALE FACTOR FROM S.P.C. GRID INVERSE (AS OBSERVED), PER AVG. SCALE FACTOR = 1.000079092076.



S.P.C., Ia. N. Zone, USft
N = 3600599.59
E = 5282722.90
Grid Scale Factor = 0.99995882
Convergence = 0° 54' 24"
(NAD83-2007 "BHco07", RTK Obs.)

FIELD SURVEY: G.T., S.S., & T.K. 8/01/11
 PREPARED BY: L.G., S.S., & G.T. 9/26/11

CERTIFICATION



I hereby certify that this land surveying document was prepared and the related survey work was performed by me or under my direct personal supervision and that I am a duly licensed Land Surveyor under the laws of the State of Iowa.

Geoffrey Allen Tinker 9/26/2011 (date)

License Number 15748

My license renewal date is December 31, 2012

Pages or sheets covered by this seal:

This Land Corner Certificate Only.

LIST CORNERS TO BE INDEXED

<u>Corner</u>	<u>Section -</u>	<u>Township -</u>	<u>Range</u>
N.E. Cor.	7	87 N	11 W
N.W. Cor.	8	87 N	11 W
S.E. Cor.	6	87 N	11 W
S.W. Cor.	5	87 N	11 W

INDEX OF ABBREVIATIONS

(M) = "Measured" Dimension "NP" = Reflectorless EDM Meas.
(P) = "Platted" Dimension "MLM" = Indirect Measure
(R) = "Record" Dimension "CM" = Concrete Monument
(C) = "Calculated" Dimension "SM" = Survey Marker Spike/Tag
"IGS" = Iowa Geodetic Survey "PK" = PK/MAG Nail Brand Style
"WPA" = Works Progress Admin. Survey
"p" = per George Miller Survey (BHCo Surveyor 1858-1860)
"b" = per John Ball Survey (BHCo Surveyor 1866-1881)
"n" = per Nathan Barber Survey (BHCo Surveyor 1908-1931)