

INDEX

BLACK HAWK COUNTY, IOWA:SS

FEE BOOK # 20 05 10419

PROOF

FILED FOR RECORD OCT 25, 2004, AT 11:00 A.M. FEE 1-5.00/- 1.00/

COMPARED

David L. Scheil

BLACK HAWK COUNTY RECORDER

ENV WAYNE CLAASSEN ENGINEERING AND SURVEYING PO BOX 878 WATERLOO IA 50704
WAYNE CLAASSEN ENGINEERING AND SURVEYING, INC. PHONE: (VOICE) 319-235-6294
P.O. BOX 898 WATERLOO, IOWA 50704-0898 (FAX) 319-235-0028

UNITED STATES PUBLIC LAND SURVEY CORNER CERTIFICATE

Land Survey Monuments situated in Section 6, Township 87 North, Range 11 West, of the Fifth Principal Meridian, Black Hawk County, Iowa.

Previously recorded in _____ in County Recorder's Office.
(book, page, document number, etc.)

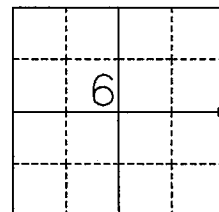
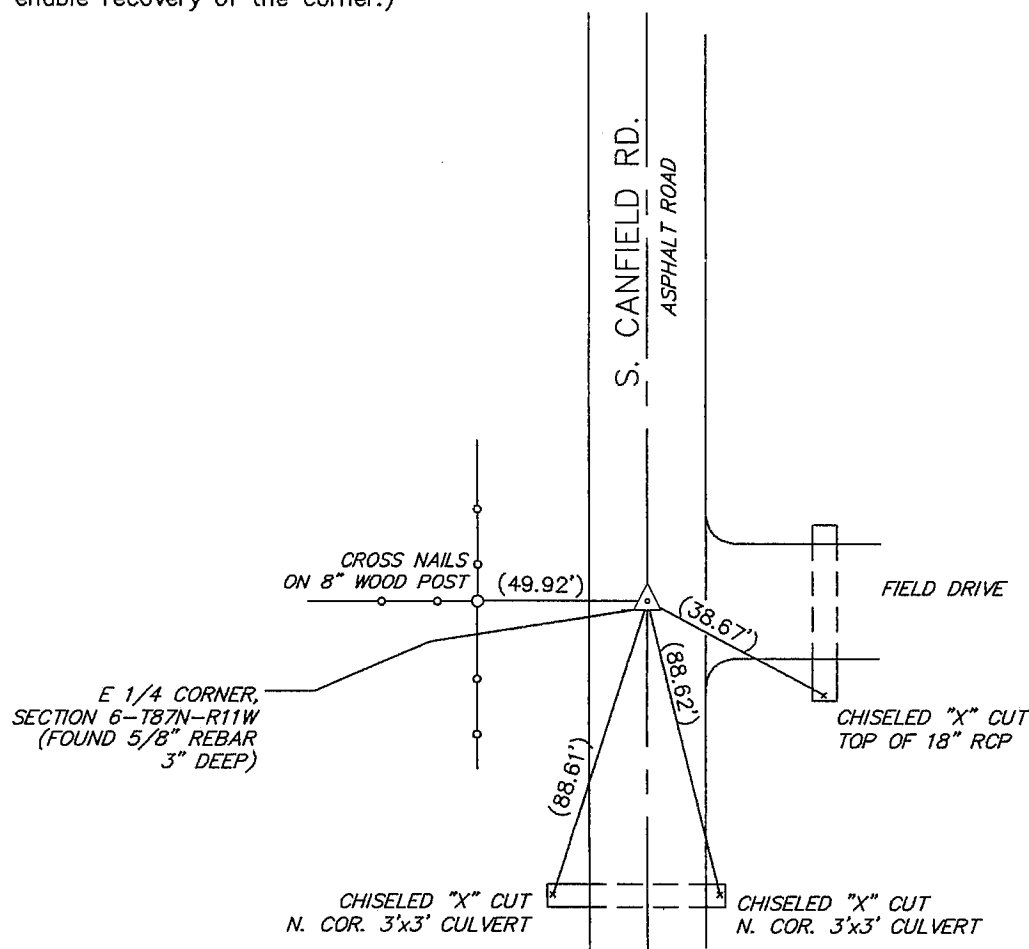
(Show reason for preparing this certificate, the evidence and detailed procedures used in establishing the corner positions and monumentation found or placed.)

Monument Description and Remarks No corner certificate on file.

(Note: see Robinson Eng. survey, Misc. 266, Pg. 823)

PLAN - VIEW

(Show a minimum of three reference ties to durable physical objects, relevant monuments and physical conditions that will enable recovery of the corner.)



FIELD BOOK 606-48

I hereby certify that the survey work was completed and this certificate was prepared by me or under my direct personal supervision and that I am a duly licensed land surveyor under the laws of the state of Iowa.

Signature: *David L. Scheil*

David L. Scheil, L.S.

Date: Oct. 22, 2004 Lic. No. 16775

My license renewal date is December 31, 2004

SEAL

List Corners to be Indexed

Corners	Section	Twp	Range
EAST CORNER,	6	87 N	11 W

