

UNITED STATES PUBLIC LAND SURVEY CORNER CERTIFICATE OF

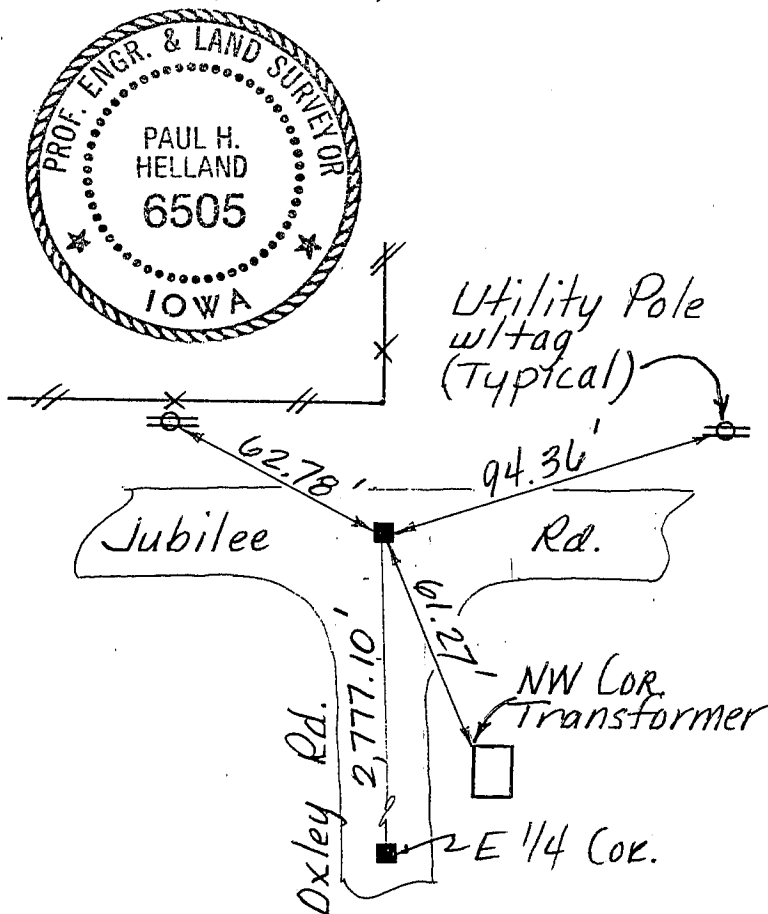
Land Survey Monuments situated in Section 5, Township 87, Range 11, of the Fifth Principal Meridian, Black Hawk County, Iowa.
Previously recorded in Book _____, Page _____.

(Show reason for preparing this certificate, the evidence and detailed procedures used in establishing the corner positions and monumentation found or placed.)

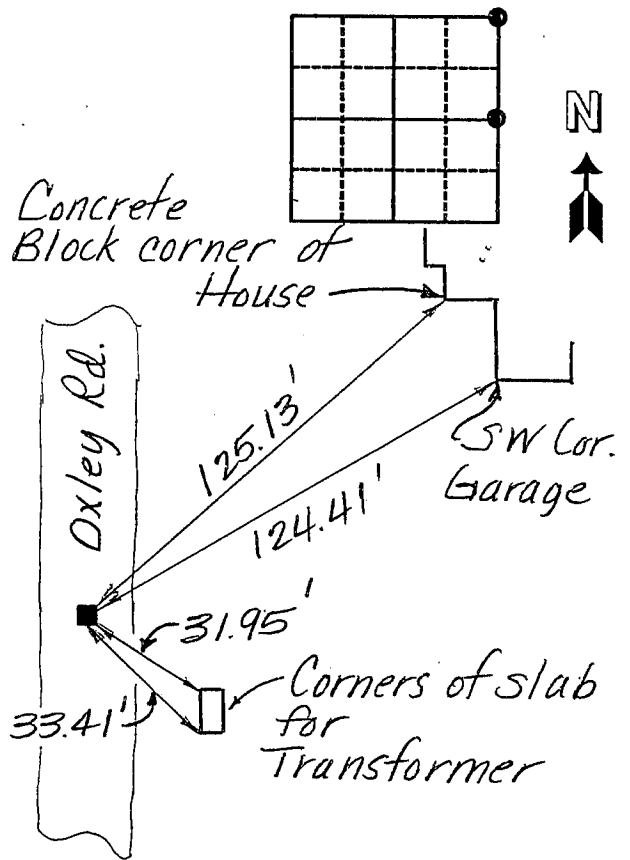
Monument Description and Remarks: Survey done in NE FRL 1/4 Sec. 5,
NE Cor. → Found concrete monument w/brass cap & 5/8" ϕ
rebar @ South edge, 0.6' Deep
E 1/4 Cor. → Found concrete monument w/brass cap & 5/8" ϕ
rebars on the north & South edges, 0.5' Deep

PLAN - VIEW

(Show a minimum of three reference ties to durable physical objects, relevant monuments and physical conditions that will enable recovery of the corner.)



NE CORNER



E 1/4 CORNER

96-291

I HEREBY CERTIFY THAT THIS PLAT, MAP, SURVEY OR REPORT WAS MADE BY ME OR UNDER MY DIRECT PERSONAL SUPERVISION AND THAT I AM A DULY REGISTERED LAND SURVEYOR UNDER THE LAWS OF THE STATE OF IOWA

Paul H. Helland DATE 7/30/96

PAUL H. HELLAND, P.E. & R.L.S. IOWA REGISTRATION NO. 6505

MY REGISTRATION EXPIRES DECEMBER 31, 1997

HES

THUNDER RIDGE BANK BUILDING
2322 WEST 1ST ST., SUITE B
CEDAR FALLS, IOWA 50613
319-266-0161

HELLAND ENGINEERING & SURVEYING, LTD.

List Corners to be Indexed

Corners	Section	Twp	Range
NE	5	87	11
E 1/4	5	87	11