



Doc ID: 004396500001 Type: GEN  
Kind: CORNER  
Recorded: 02/17/2011 at 09:48:23 AM  
Fee Amt: \$9.00 Page 1 of 1  
Black Hawk County Iowa  
JUDITH A MCCARTHY RECORDER

File 2011-00016366

Jeffrey P. Helland, 1107 Technology Parkway, Cedar Falls, Iowa 50613-6951, (319)-266-0161

## UNITED STATES PUBLIC LAND SURVEY CORNER CERTIFICATE OF

LAND SURVEY MONUMENTS SITUATED IN SECTION NO. 4, TOWNSHIP NO. 87 NORTH, RANGE  
NO. 11 WEST OF THE FIFTH PRINCIPAL MERIDIAN, BLACK HAWK COUNTY, IOWA.  
PREVIOUSLY RECORDED IN N/A

(SHOW REASON FOR PREPARING THIS CERTIFICATE, THE EVIDENCE AND DETAILED PROCEDURES USED IN ESTABLISHING THE  
CORNER POSITIONS AND MONUMENTATION FOUND OR PLACED.)

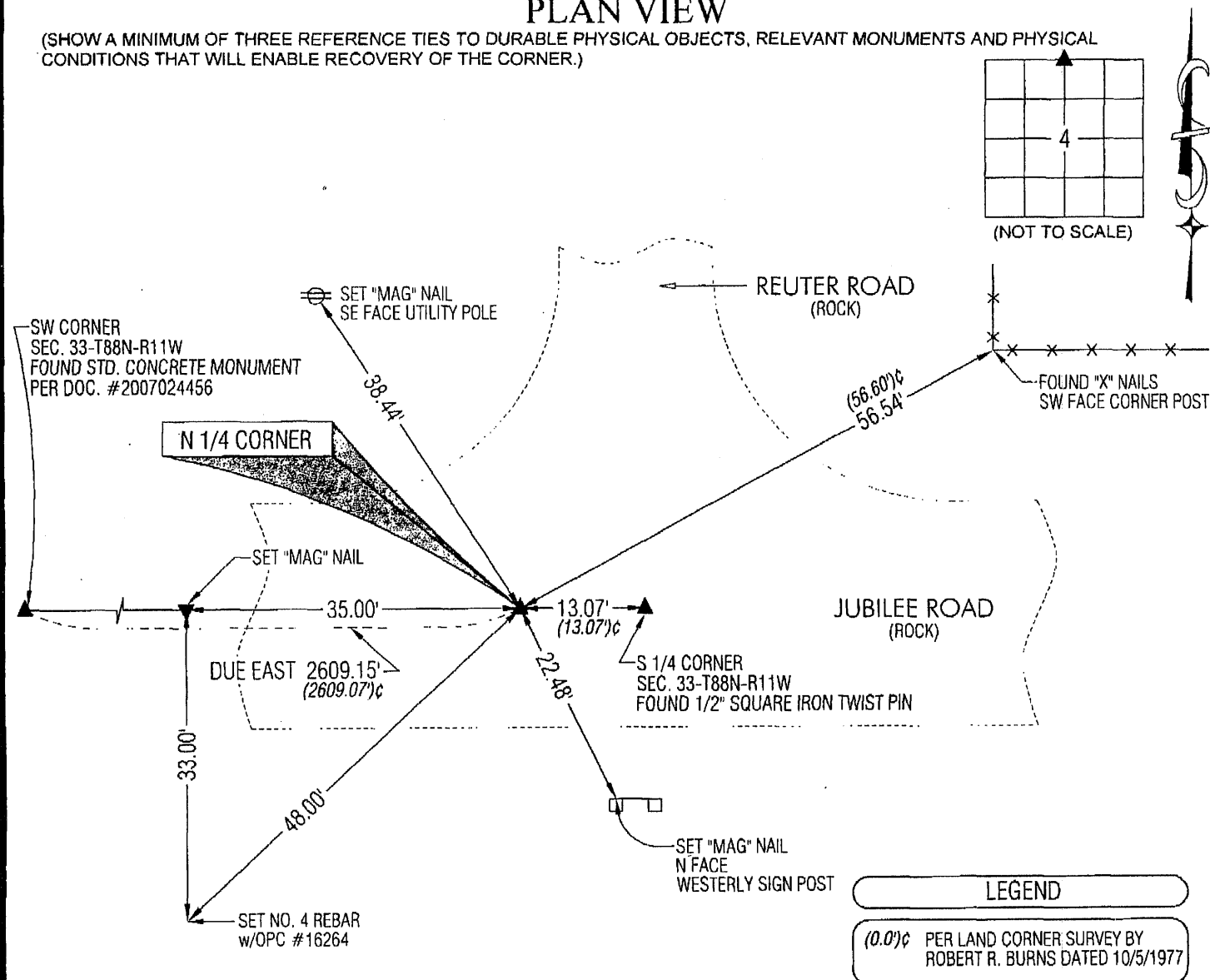
### MONUMENT DESCRIPTION AND REMARKS:

NO USPLSCC ON FILE. SURVEY COMPLETED IN THE NW FRL 1/4 OF SEC. 4-T87N-R11W.

→ N 1/4 CORNER: LAND CORNER SURVEY BY ROBERT R. BURNS DATED 10/5/1977 CALLS FOR [FOUND CONCRETE MONUMENT  
18" DEEP, SET IRON PIN OVER.]. FOUND NO. 8 REBAR (0.2'± DEEP) CORRESPONDING TO TWO REMAINING REFERENCE TIES.  
CORNER IS IN APPROXIMATE CENTER LINE OF JUBILEE ROAD AND 13'± WEST OF CENTERLINE OF REUTER ROAD.

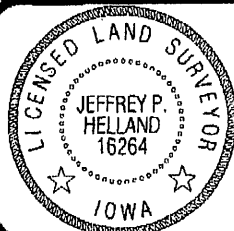
### PLAN VIEW

(SHOW A MINIMUM OF THREE REFERENCE TIES TO DURABLE PHYSICAL OBJECTS, RELEVANT MONUMENTS AND PHYSICAL  
CONDITIONS THAT WILL ENABLE RECOVERY OF THE CORNER.)



**HES** HELLAND ENGINEERING & SURVEYING, LTD.  
1107 Technology Parkway  
Cedar Falls, Iowa 50613-6951  
(319)-266-0161

SHINER = 8D NAIL & 1 5/16"Ø METAL SHINER  
BRASS TAG = 8D NAIL & 13/16"Ø BRASS TAG  
OPC = PLASTIC CAP (O=ORANGE, R=RED, Y=YELLOW)  
(00') RECORDED AS FILE NAME: 11-117C1.DWG



I hereby certify that this land surveying document was prepared  
and the related survey work was performed by me or under my  
direct personal supervision and that I am a duly licensed Land  
Surveyor under the laws of the State of Iowa.

*Jeffrey P. Helland 2/16/11*  
Jeffrey P. Helland  
License Number 16264  
My license renewal date is December 31, 2011.  
All pages or sheets are covered by this seal except:

LIST CORNERS TO BE INDEXED

CORNER	SECTION	TOWNSHIP	RANGE
N 1/4 CORNER	4	87N	11W