

BLACK HAWK COUNTY ENGINEER

PREPARED BY: BLACK HAWK COUNTY ENGINEERS OFFICE
316 E. FIFTH STREET, ROOM 211 WATERLOO, IOWA 50703PH.# (319) 833-3008
FAX.# (319) 833-3139SLSI 9-94
CERT 12-96

UNITED STATES PUBLIC LAND SURVEY CORNER CERTIFICATE OF
Land Survey Monuments situated in Section 03, Township 87 N,
Range 11 W, of the Fifth Principal Meridian, BLACK HAWK County, Iowa.
Previously recorded in Misc. Book n/a, Page n/a, in County Recorder's Office.

(Show reason for preparing this certificate, the evidence and detailed procedures used in establishing the corner positions and monumentation found or placed.)

Monument Description and Remarks: FND. 1/2" REBAR PRIOR TO RE-SURF.
IN C.L. ROAD w/ NEW 4.5" ACC MAT OVERLAY & RE-EST. 0.20' W. OF C.L. ACC.
CORNER TEMP. REFERENCED, AND RESET w/ #5 REBAR LOCATED AS DENOTED.
TEMP. HUBS USED AT POT'S ON REF. TIE LINE TO #5 REBARS SET WEST.
EXISTING REF. TIES PER CO. ENGINEERS (FIELD) BK. #1000 DATED 6/10/83.
CORNER FILED DUE TO PROJECT CONSTRUCTION AND TO UPDATE RECORD.

PLAN - VIEW

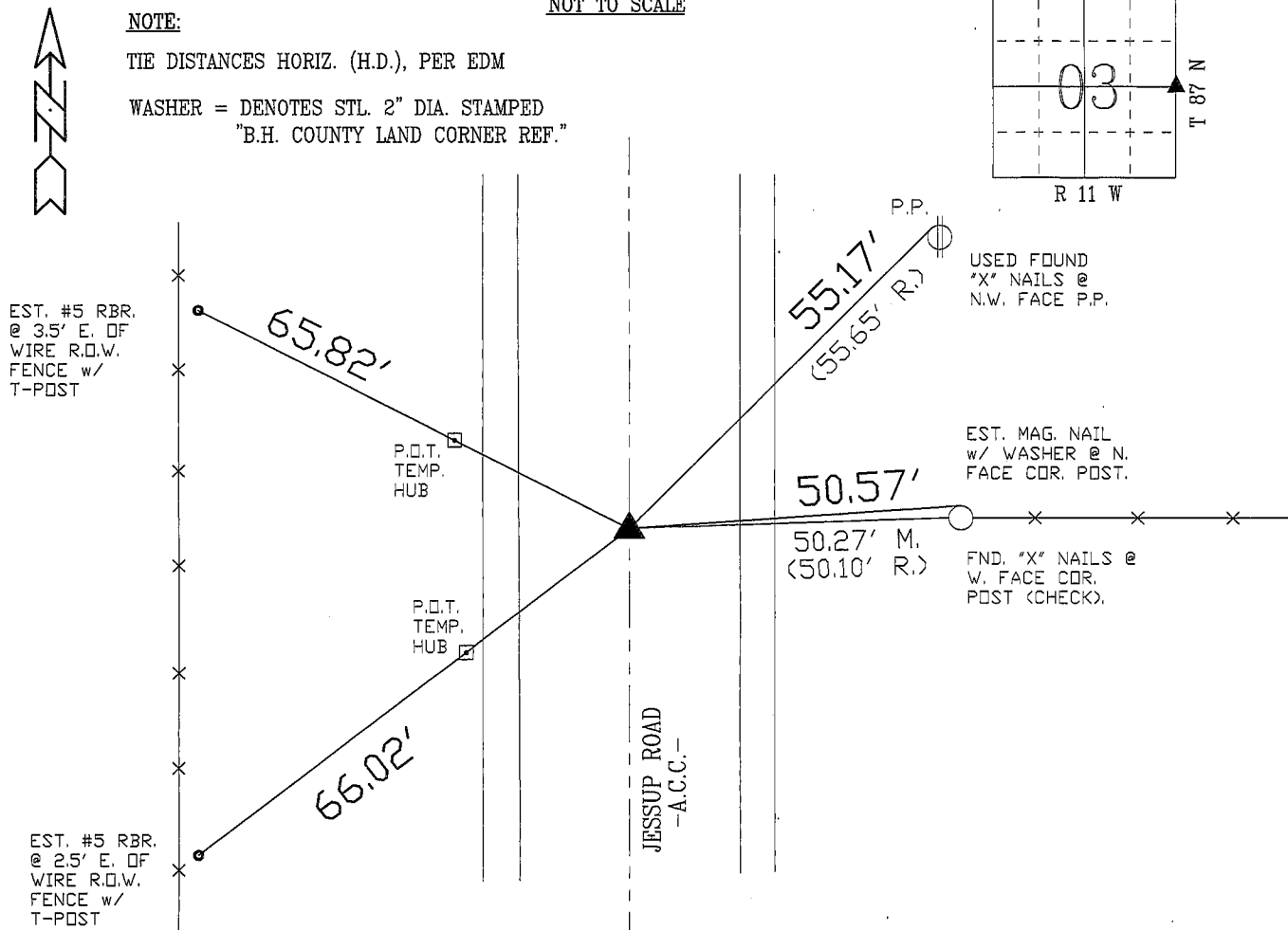
(Show a minimum of three reference ties to durable physical objects, relevant monuments and physical conditions that will enable recovery of the corner.)

NOTE:

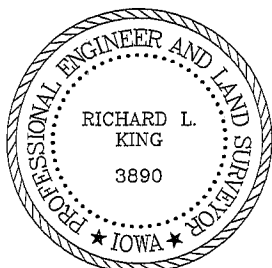
TIE DISTANCES HORIZ. (H.D.), PER EDM

WASHER = DENOTES STL. 2" DIA. STAMPED
"B.H. COUNTY LAND CORNER REF."

NOT TO SCALE

FIELD SURVEY: G.T. & B.K. 10/10/05
PREPARED BY: G. TINKER 10/21/05

CERTIFICATION



I hereby certify that this land surveying document
was prepared and the related survey work was
performed by me or under my direct personal
supervision and that I am a duly licensed Land
Surveyor under the laws of the State of Iowa.

Richard L. King 11/16/05
Richard L. King (date)

License Number 3890

My license renewal date is December 31, 2005

Pages or sheets covered by this seal:

This Land Corner Certificate Only.

LIST CORNERS TO BE INDEXED

Corner	Section	Township	Range
E. 1/4	03	87 N	11 W
W. 1/4	02	87 N	11 W