

UNITED STATES PUBLIC LAND SURVEY CORNER CERTIFICATE OF

Land Survey Monuments situated in Section 2, Township 87 N, Range 11 W, of the Fifth Principal Meridian, Black Hawk County, Iowa
Previously recorded in Book N/A, Page .

Show reason for preparing this certificate, the evidence and detailed procedures used in establishing the corner positions and monumentation found or placed.)

Monument Description and Remarks: Corner was used for a survey in the NW 1/4 of 2-87N-11W.

W.P.A. Corner ties dated 8-27-1941 call out setting a S.C.M 9" deep, IDOT Land Corner Survey dated

10-5-1977 calls out finding a concrete monument 3" deep and driving a iron pin along the East side.

Searched area with metal locator and found S.C.M. with the top broken and laying on its side. Removed

top of S.C.M, found remainder of S.C.M. in place, and iron pin along the east side of S.C.M. Drove top of

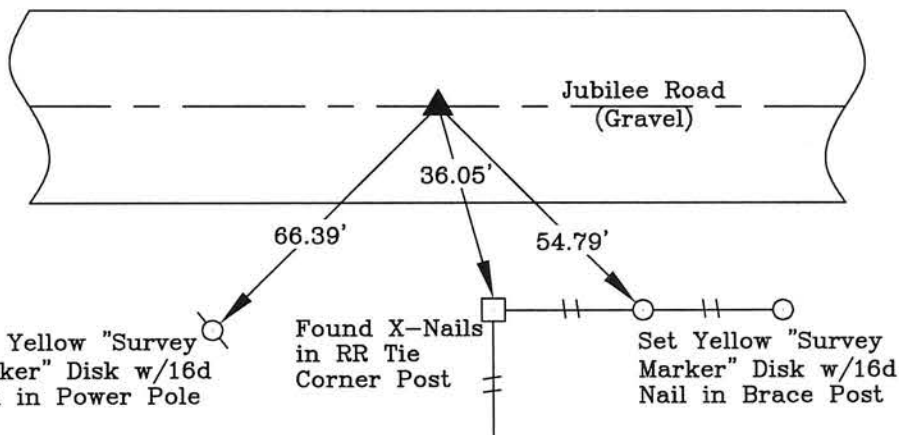
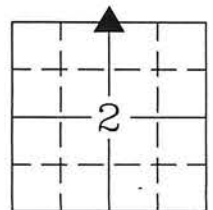
iron pin below the top of S.C.M. and placed 5/8" x 0.75' Rebar w/1.5" Aluminum Cap Stamped L.S.

#12088 over the center of S.C.M. to raise up monumentation.

No previous corner certificate on file.

PLAN - VIEW

(Show a minimum of three reference ties to durable physical objects, relevant monuments and physical conditions recovery of the corner.)



LEGEND

- ▲ SECTION CORNER FOUND
- △ SECTION CORNER SET
- SET 5/8" x 24" REBAR W/RED CAP IA LIC #12088
- ⊙ POWER POLE
- +— FENCE LINE
- FENCE CORNER FOUND
- FENCE POST
- ⊙ LIGHT POLE
- ☼ TREES DECID./CONIF.
- T TELEPHONE PED.
- CONC. REF. MONUMENT

I hereby certify that this land surveying document was prepared and the related survey work was performed by me or under my direct personal supervision and that I am a duly licensed Land Surveyor under the laws of the State of Iowa.



Wendell J. Lupkes 3-2-2015
WENDELL J. LUPKES, L.S. DATE
License number 12088
My license renewal date is December 31, 2016
Pages or sheets covered by this seal: 1

List Corner to be Indexed

Corner	Section	Twp	Range
North 1/4	2	87 N	11 W



VJ Engineering
1501 Technology Parkway
Cedar Falls, Iowa - 319-266-5829

SECTION CORNER
REFERENCE TIES

File No.
13-8121
Drawn By:
MAK
Date
2/27/15