



Doc ID: 006227350001 Type: GEN
Recorded: 03/03/2015 at 01:47:14 PM
Fee Amt: \$7.00 Page 1 of 1
Black Hawk County Iowa
SANDIE L. SMITH RECORDER

File 2015-00013777

UNITED STATES PUBLIC LAND SURVEY CORNER CERTIFICATE

OF

Land Survey Monuments situated in Section 2, Township 87 N, Range 11 W, of the Fifth Principal Meridian, Black Hawk County, Iowa
Previously recorded in Book _____, Page _____.

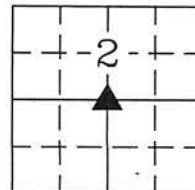
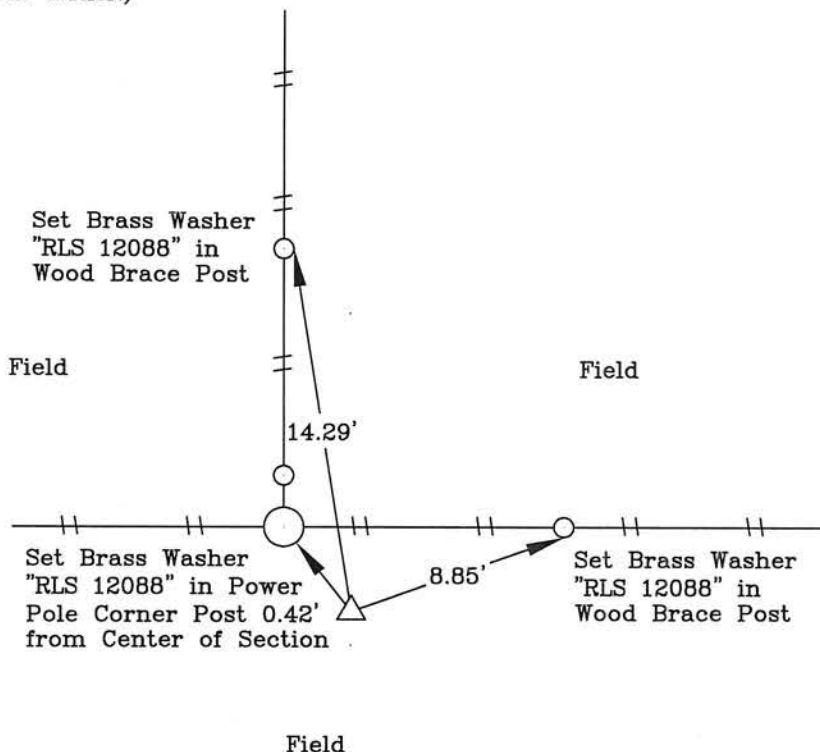
Show reason for preparing this certificate, the evidence and detailed procedures used in establishing the corner positions and monumentation found or placed.)

Monument Description and Remarks: Center of Section 2-87N-11W

IDOT Land Corner Survey for I-380 dated Oct. 5, 1977 calls for a found granite stone 6" deep. No reference ties remained as fence had been reconstructed. Searched area with probe and shovel. Did not find granite stone, set 5/8" ϕ x 24" rebar with Red Cap L.S. #12088 at record distance per IDOT Land Corner Survey. Corner was used for a survey in the NW Frl. 1/4 2-87N-11W.
No previous corner certifacte on file.

PLAN - VIEW

(Show a minimum of three reference ties to durable physical objects, relevant monuments and physical conditions recovery of the corner.)



LEGEND

- ▲ SECTION CORNER FOUND
- △ SECTION CORNER SET
- SET 5/8" ϕ x 24" REBAR W/RED CAP IA LIC #12088
- ⊙ POWER POLE
- +— FENCE LINE
- FENCE CORNER FOUND
- FENCE POST
- ⊙ LIGHT POLE
- ⊙ TREES DECID./CONIF.
- ⊙ TELEPHONE PED.
- CONC. REF. MONUMENT

I hereby certify that this land surveying document was prepared and the related survey work was performed by me or under my direct personal supervision and that I am a duly licensed Land Surveyor under the laws of the State of Iowa.



Wendell J. Lupkes 3-2-2015
WENDELL J. LUPKES, L.S. DATE

License number 12088

My license renewal date is December 31, 2016

Pages or sheets covered by this seal: 1

List Corner to be Indexed

Corner	Section	Twp	Range
Center	2	87 N	11 W



VJ Engineering
1501 Technology Parkway
Cedar Falls, Iowa - 319-266-5829

SECTION CORNER
REFERENCE TIES

file no.
13-8121

drawn by
MAK
date
2/27/15