

MISC
INDEX VS
MARGIN
PROOF
COMPARE

FILED FOR RECORD Jan 27, 2000 AT
4:00P M., AND RECORDED IN BOOK 337
OF MISC PAGE 78
Catricia A. Jess RECORDER
FEE 1-5.00/
PAUL HELLAND

Paul H. Helland, 1107 Technology Parkway, Cedar Falls, Iowa 50613-6951, (319)-266-0161

UNITED STATES PUBLIC LAND SURVEY CORNER CERTIFICATE OF

LAND SURVEY MONUMENTS SITUATED IN SECTION NO. 1, TOWNSHIP NO. 87 NORTH, RANGE
NO. 11 WEST OF THE FIFTH PRINCIPAL MERIDIAN, BLACK HAWK COUNTY, IOWA.

PREVIOUSLY RECORDED IN BOOK _____, PAGE _____.

(SHOW REASON FOR PREPARING THIS CERTIFICATE, THE EVIDENCE AND DETAILED PROCEDURES USED IN ESTABLISHING THE
CORNER POSITIONS AND MONUMENTATION FOUND OR PLACED.)

MONUMENT DESCRIPTION AND REMARKS:

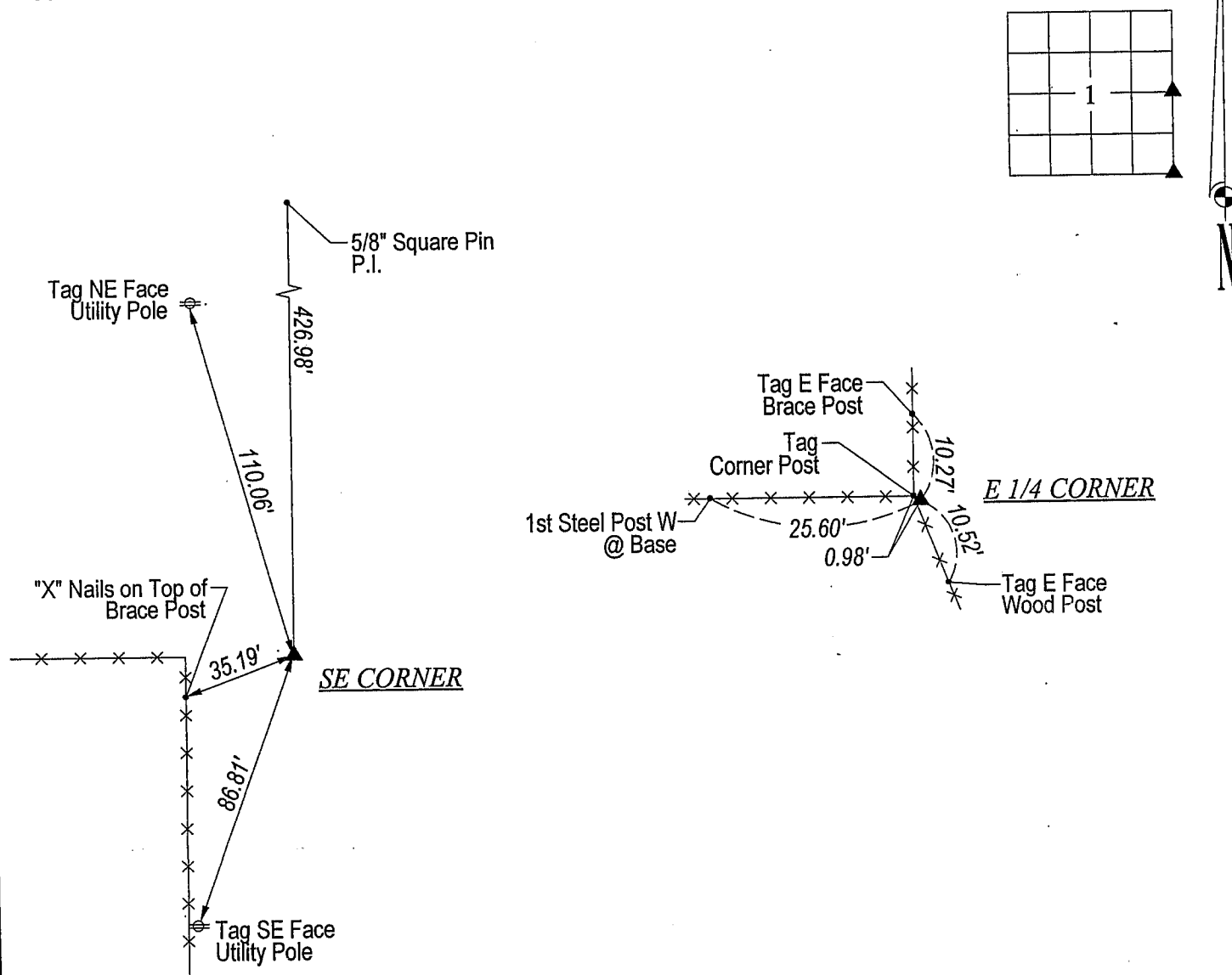
SURVEY DONE IN NWRL 1/4 OF SEC. 7-T87N-R10W & SWFRL 1/4 OF SEC. 6-T87N-R10W IN BUCHANAN COUNTY.

E 1/4 CORNER: Found concrete monument w/brass cap (1+6), up 0.6'.

SE CORNER: Found No. 5 rebar, 0.2' deep.

PLAN VIEW

(SHOW A MINIMUM OF THREE REFERENCE TIES TO DURABLE PHYSICAL OBJECTS, RELEVANT MONUMENTS AND PHYSICAL
CONDITIONS THAT WILL ENABLE RECOVERY OF THE CORNER.)



HES

HELLAND ENGINEERING & SURVEYING, LTD.
1107 Technology Parkway
Cedar Falls, Iowa 50613-6951
(319)-266-0161

FILE NAME: 99-353C3.DRG



I hereby certify that this land surveying document was prepared
and the related survey work was performed by me or under my
direct personal supervision and that I am a duly licensed Land
Surveyor under the laws of the State of Iowa.

Paul H. Helland 1/6/00
Paul H. Helland
License Number 6505
My license renewal date is December 31, 1999, 2001
All pages or sheets are covered by this seal except:

LIST CORNERS TO BE INDEXED

| CORNER | SECTION | TOWNSHIP | RANGE |
|--------------|---------|----------|-------|
| E 1/4 CORNER | 1 | 87N | 11W |
| SE CORNER | 1 | 87N | 11W |