

BLACK HAWK COUNTY ENGINEER

PREPARED BY: BLACK HAWK COUNTY ENGINEERS OFFICE
316 E. FIFTH STREET, ROOM 211 WATERLOO, IOWA 50703PH.# (319) 833-3008
FAX.# (319) 833-3139SLSI 9-94
CERT 12-96

UNITED STATES PUBLIC LAND SURVEY CORNER CERTIFICATE OF
Land Survey Monuments situated in Section 01, Township 87 N,
Range 11 W, of the Fifth Principal Meridian, BLACK HAWK County, Iowa.
Previously recorded in Misc. Book N/A, Page N/A, in County Recorder's Office.

(Show reason for preparing this certificate, the evidence and detailed procedures used in establishing the corner positions and monumentation found or placed.)

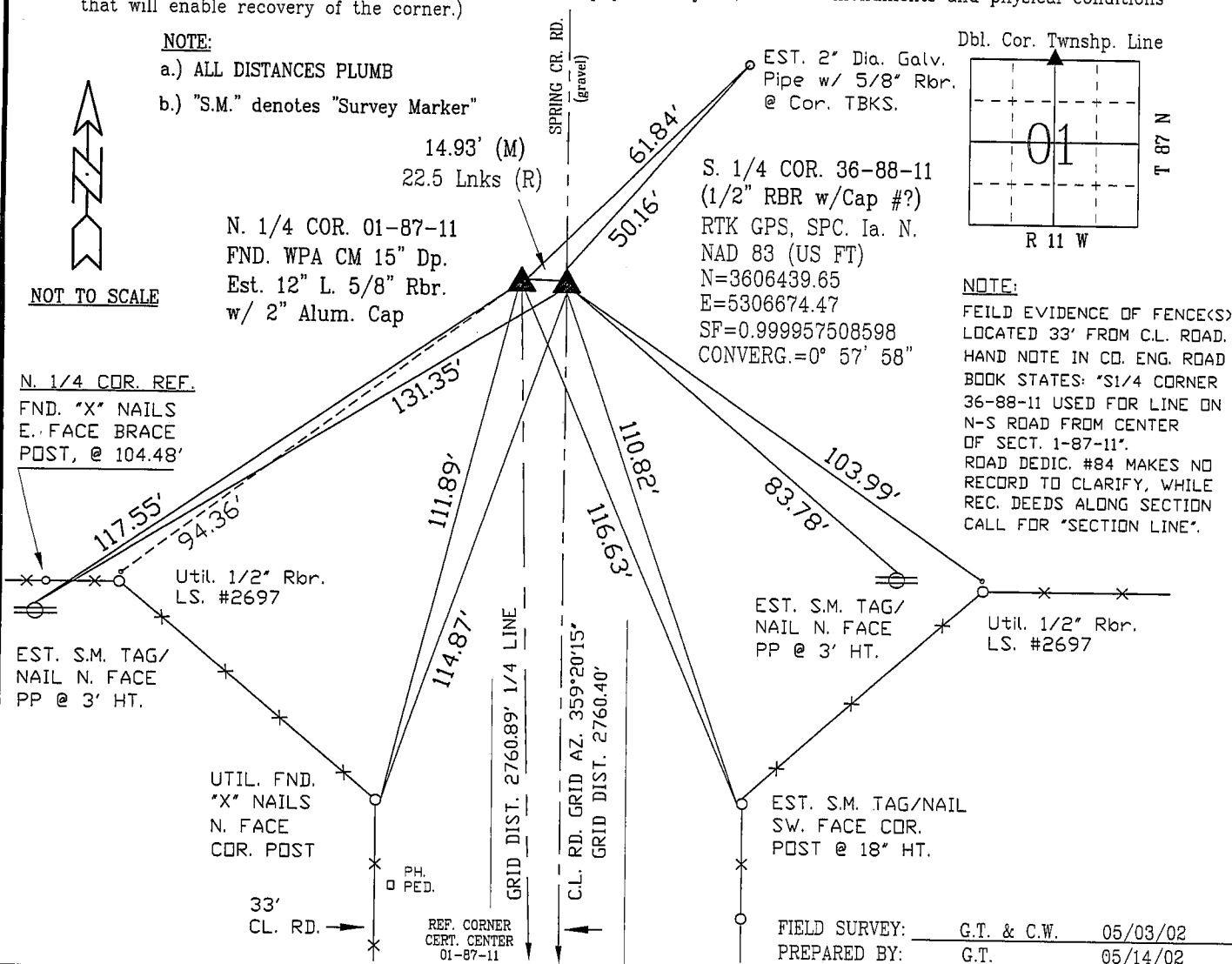
Monument Description and Remarks: N1/4 SECTION 01-87-11 FND. STD. C.M.
@ 15" DEEP STAMPED "1", AND LOC. 14.93' WEST OF FND S. 1/4 36-88-11.
CORNER LOCATED PER WPA NOTES DATED 8-2-1941, IN ACCORDANCE WITH
CO. SURVEYOR "BALL" NOTES OF CEMETARY IN NW 1/4 OF SECTION, BEING
RECORD 22.5 LINKS FROM THAT OF GLO SURVEY. RE-SET 12" L. 5/8" RBR.
ON TOP OF C.M. AND EST. 2" ALUM. CAP "BLACK HAWK CO. LAND CORNER".

PLAN - VIEW

(Show a minimum of three reference ties to durable physical objects, relevant monuments and physical conditions that will enable recovery of the corner.)

NOTE:

- a.) ALL DISTANCES PLUMB
b.) "S.M." denotes "Survey Marker"



CERTIFICATION

I hereby certify that this land surveying document was prepared and the related survey work was performed by me or under my direct personal supervision and that I am a duly licensed Land Surveyor under the laws of the State of Iowa.

Richard L. King (signature)
Richard L. King (date)

License Number 3890My license renewal date is December 31, 2003

Pages or sheets covered by this seal:

This Land Corner Certificate Only.

LIST CORNERS TO BE INDEXED

Corner	Section	Township	Range
N. 1/4	01	87 N	11 W
S. 1/4	36	88 N	11 W