

UNITED STATES PUBLIC LAND SURVEY CORNER CERTIFICATE OF

LAND SURVEY MONUMENTS SITUATED IN SECTION NO. 6, TOWNSHIP NO. 87 NORTH, RANGE NO. 10 WEST OF THE FIFTH PRINCIPAL MERIDIAN, BUCHANAN COUNTY, IOWA.
PREVIOUSLY RECORDED IN _____

(SHOW REASON FOR PREPARING THIS CERTIFICATE, THE EVIDENCE AND DETAILED PROCEDURES USED IN ESTABLISHING THE CORNER POSITIONS AND MONUMENTATION FOUND OR PLACED.)

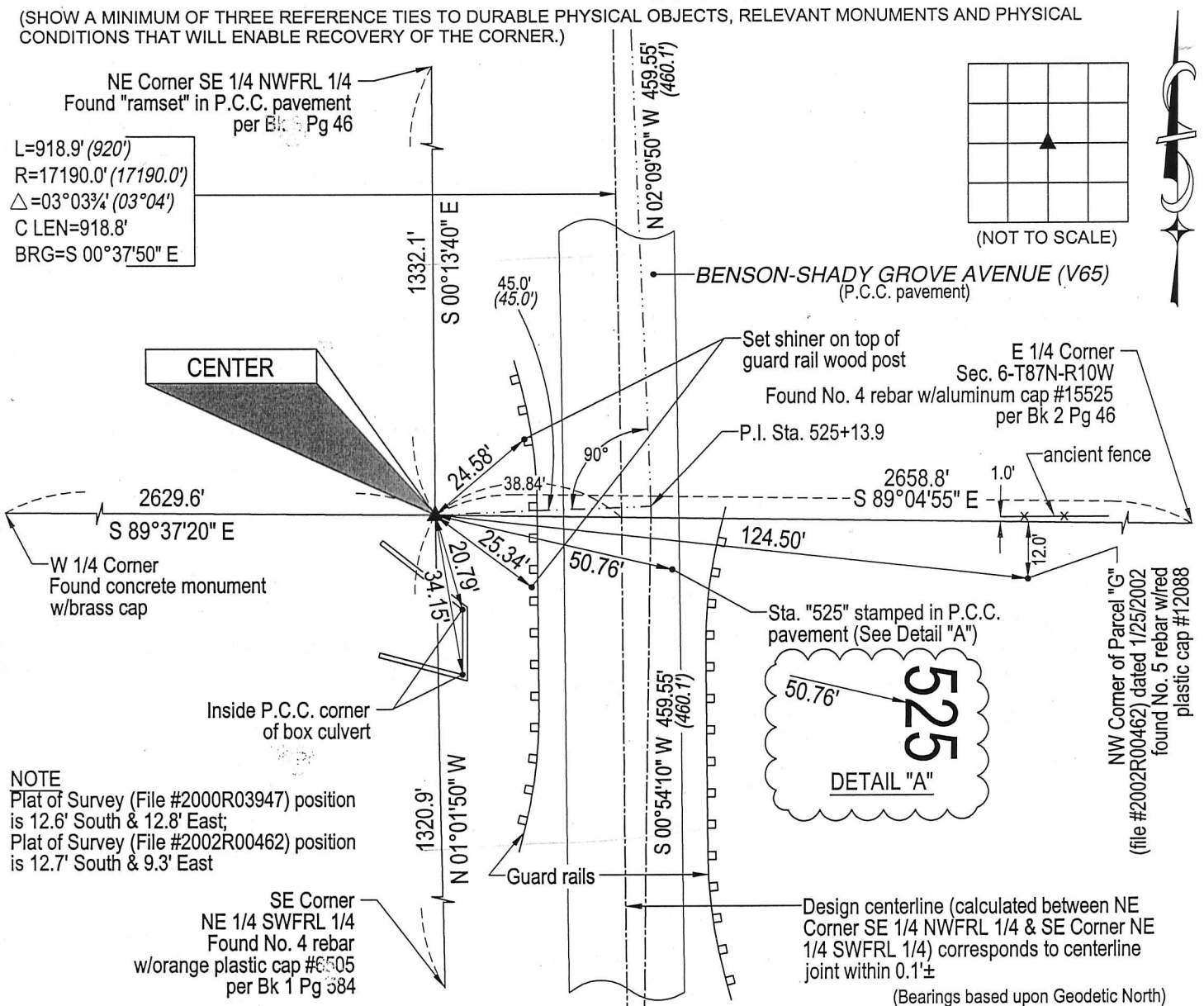
MONUMENT DESCRIPTION AND REMARKS:

No corner certificate on file. Survey completed in the NWFL 1/4 of Sec. 6-T87N-R10W.

CENTER: Buchanan County Engineer reference ties (11/1981) calls for "Set R.R. spk. in bridge on proj. line from North and on measured distance from East, also property line East." Corner and all ties obliterated by construction of County Highway #V65. Corner established at the same time as the SE corner of the NE 1/4 SWFL 1/4 (Bk 1 Pg 584). Plat of Survey (File #2000R03947) intersected lines between E 1/4 Cor. & W 1/4 and N 1/4 Cor. & SE Cor. NE 1/4 SWFL 1/4, no monument set. Plat of Survey (File #2002R00462) intersected lines between E 1/4 Cor. & W 1/4 and NE Cor. SE 1/4 NWFL 1/4 & SE Cor. NE 1/4 SWFL 1/4, no monument set. Set No. 4 rebar w/orange plastic cap #6505 45.0' West of P.I. Sta. 525+13.9 per Buchanan County Engineer road plans.

PLAN VIEW

(SHOW A MINIMUM OF THREE REFERENCE TIES TO DURABLE PHYSICAL OBJECTS, RELEVANT MONUMENTS AND PHYSICAL CONDITIONS THAT WILL ENABLE RECOVERY OF THE CORNER.)



NOTE

Plat of Survey (File #2000R03947) position is 12.6' South & 12.8' East;
Plat of Survey (File #2002R00462) position is 12.7' South & 9.3' East

SE Corner
NE 1/4 SWFL 1/4
Found No. 4 rebar
w/orange plastic cap #6505
per Bk 1 Pg 584

Inside P.C.C. corner
of box culvert

shiner = 8d nail & 2 1/4"Ø metal shiner

(00') Recorded As

File Name: 04-186c1.dwg



I hereby certify that this land surveying document was prepared and the related survey work was performed by me or under my direct personal supervision and that I am a duly licensed Land Surveyor under the laws of the State of Iowa.

Paul H. Helland 3/7/05
Paul H. Helland
License Number 6505
My license renewal date is December 31, 2005.
All pages or sheets are covered by this seal except:

LIST CORNERS TO BE INDEXED

CORNER	SECTION	TOWNSHIP	RANGE
CENTER	10	87N	10W