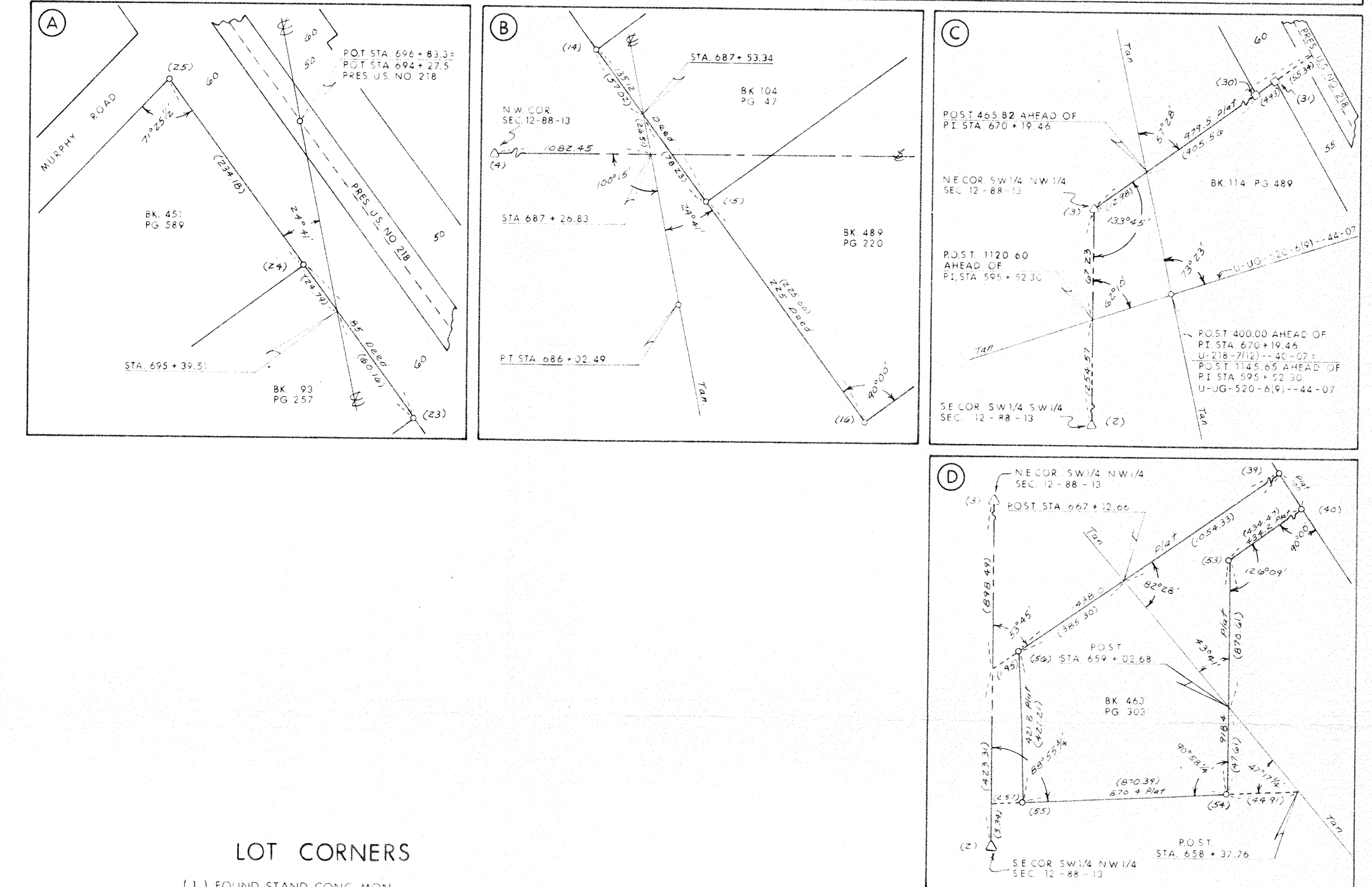
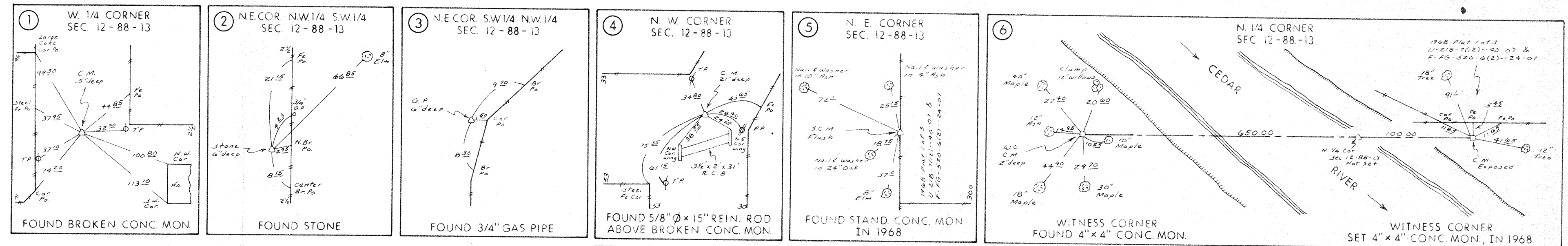
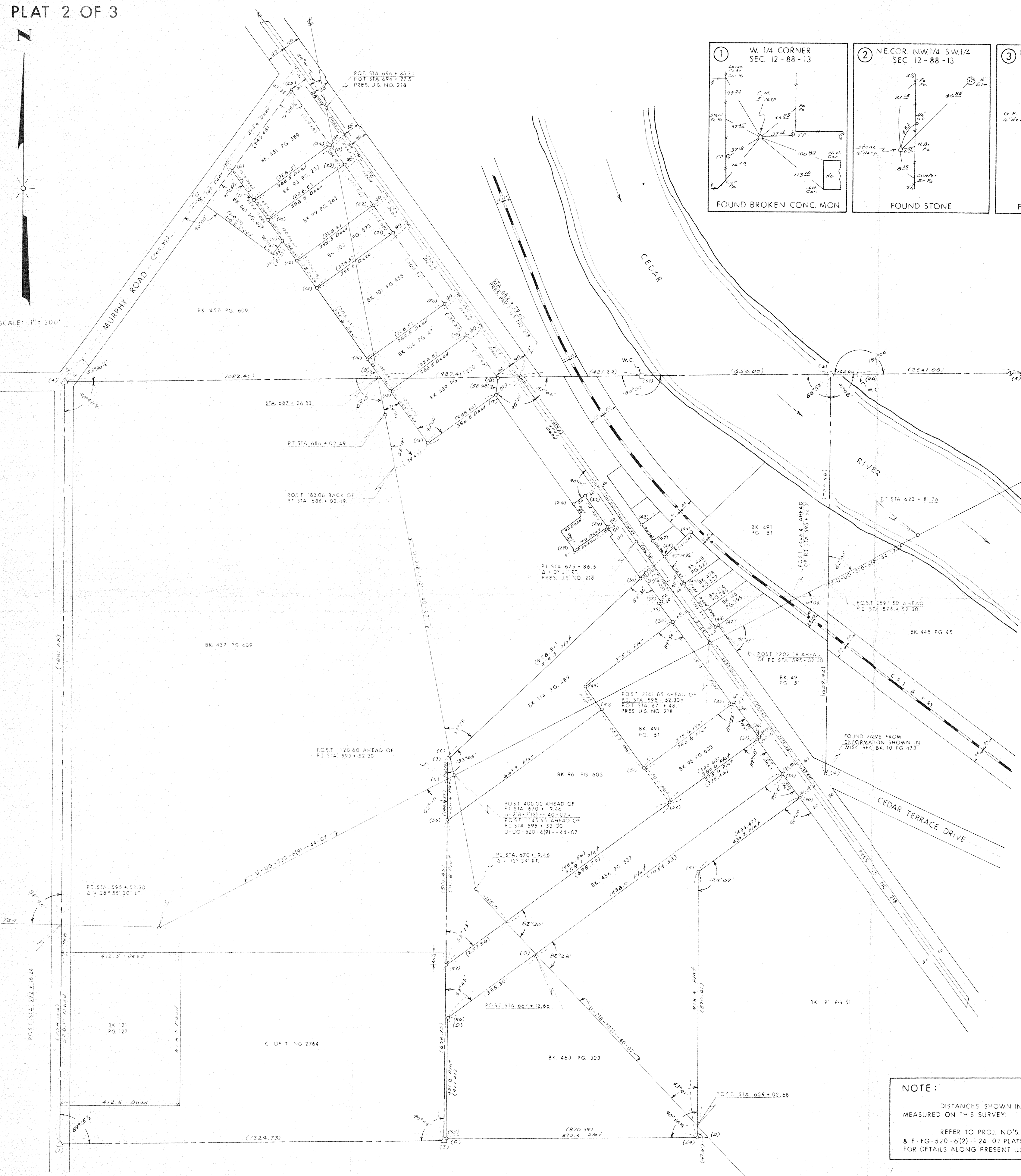


SCALE: 1" = 200'



LOT CORNERS

- (1) FOUND STAND CONC. MON.
- (2) FOUND GRANITE
- (3) FOUND 3/4\"/>

NOTE:

DISTANCES SHOWN IN PARENTHESIS WERE MEASURED ON THIS SURVEY.
REFER TO PROJ. NO'S. U-218-7(12)--40-07 & U-UG-520-6(12)--24-07 PLATS, PREPARED IN 1968 FOR DETAILS ALONG PRESENT U.S. NO. 218 PAVEMENT.

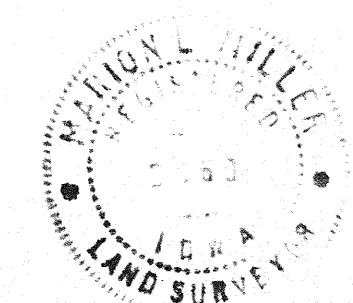
LOT CORNER SURVEY
BLACK HAWK COUNTY
PROJ. NO'S. U-218-7(12)--40-07
& U-UG-520-6(9)--44-07
T-88 N R-13 W

MADE FOR
IOWA STATE HIGHWAY COMMISSION
FOR THE PURPOSE OF ROW DESCRIPTION
ALONG RELOCATION U.S. NO. 218
AND PROPOSED NO. 520
IN THE SOUTH PART OF WATERLOO
BY
MARION L. MILLER R.L.S. NO. 3960
APRIL & MAY 1971

ALL DISTANCES WERE MEASURED CAREFULLY, AND MAY NOT AGREE WITH ROAD SURVEY STATIONING.

I HEREBY CERTIFY THAT THIS PLAT IS A TRUE REPRESENTATION OF A SURVEY MADE BY ME ASSISTED BY R. R. CARLSON, D. L. OLSON, S. R. HUDDLESON, AND W. M. BROWN, ALL DULY SWORN, AND IS CORRECT TO THE BEST OF MY KNOWLEDGE.

SIGNED: July 26, 1971



Marion L. Miller
MARION L. MILLER R.L.S. NO. 3960