

**Black Hawk County, Iowa**

Units: US Survey Feet

12/01/2020

Point ID: **7403**Stamping on Disk: **L-11 1933**

Type of Monument: *USC&GS standard bench mark disk set in standard concrete monument stamped "L 11 1933".*

Physical Details: *Station is 4" +/- below ground surface located in grass area at the northwest corner of intersection.*

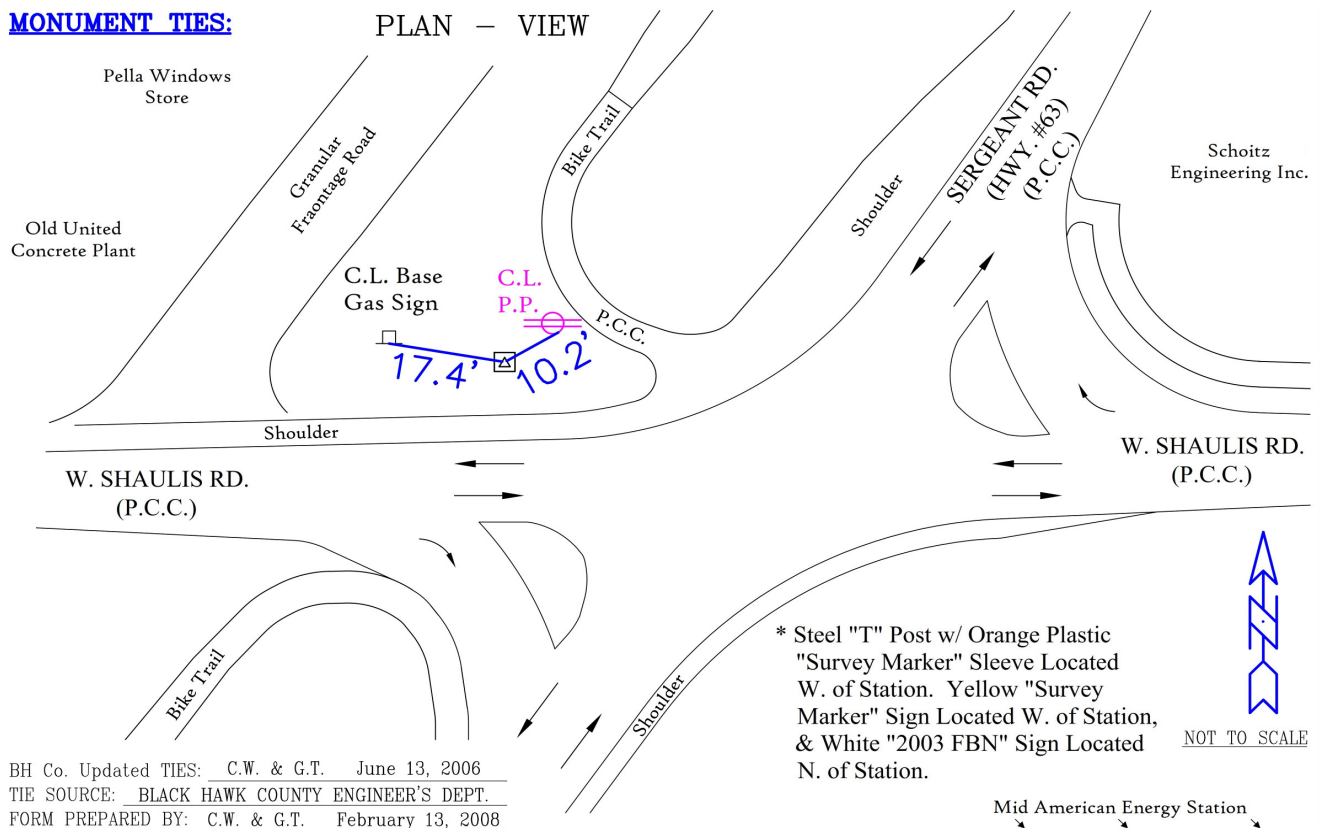
NAD 83(NA2011) Latitude: **N42°26'34.99132"** Longitude: **W92°25'14.38577"**  
NAVD 88 Ortho Height: **871.520sft** Ellip. Ht: **768.492sft** **Geoid18(Conus)**

Horizontal Datum: NAD 83(NA2011) - Vertical Datum: NAVD 1988

**Iowa North Zone (1401)** Northing: **3626362.330sft** Easting: **5212569.420sft**  
Mapping Angle: **0°43'53"** Combination Scale Factor: **0.9999162799**

Iowa Regional Coordinate System, Zone 5, Waterloo LCC

**IaRCS Zone 5** Northing: **8824622.584sft** Easting: **15453931.982sft**  
Mapping Angle: **-0°06'56"** Combination Scale Factor: **1.0000017559**

**MONUMENT TIES:**

*This document was prepared by Dan Corbin, Inc. for Black Hawk County, Iowa.*



7403



Facing North

