

Black Hawk County, Iowa

Units: US Survey Feet

12/01/2020

Point ID: **7310**

Stamping on Disk: **Hudson 1970**

Type of Monument: *NGS station disk set in vesterial clay tile stamped "HUDSON 1970".*

Physical Details: *Station is flush with ground surface at the top of a high backslope on the east side of Hwy. #58. 440ft +/- north of Strayer Road.*

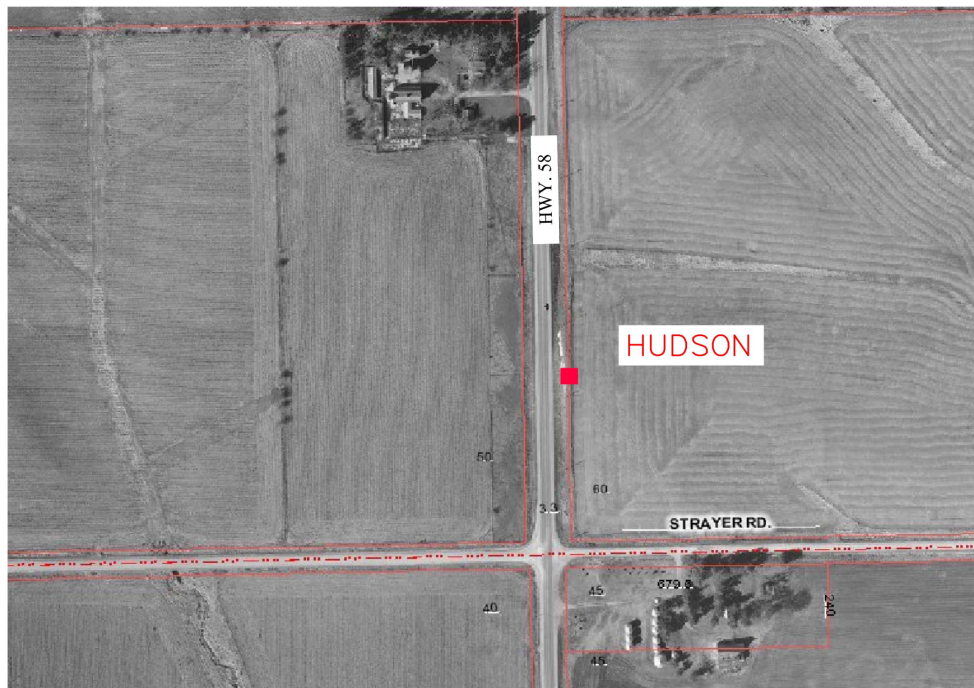
NAD 83(NA2011) Latitude: **N42°25'46.22190"** Longitude: **W92°27'56.61685"**
NAVD 88 Ortho Height: **956.759sft** Ellip. Ht: **853.402sft** Geoid18(Conus)

Horizontal Datum: NAD 83(NA2011) - Vertical Datum: NAVD 1988
Iowa North Zone (1401) Northing: **3621273.780sft** Easting: **5200467.350sft**
Mapping Angle: **0°42'04"** Combination Scale Factor: **0.9999131709**

Iowa Regional Coordinate System, Zone 5, Waterloo LCC
IaRCS Zone 5 Northing: **8819713.098sft** Easting: **15441754.961sft**
Mapping Angle: **-0°08'46"** Combination Scale Factor: **0.9999985743**

MONUMENT TIES:

PLAN — VIEW



NOT TO SCALE

BH Co. Updated TIES: C.W. & G.T. April 24, 2007
TIE SOURCE: B.H. CO. REAL ESTATE MAPPING / NGS TIES
FORM PREPARED BY: C.W. & G.T. February 13, 2008

This document was prepared by Dan Corbin, Inc. for Black Hawk County, Iowa.

7310



Facing South

