

Black Hawk County, Iowa

Units: US Survey Feet

12/01/2020

Point ID: **7309**

Stamping on Disk: **Waterloo 1934**

Type of Monument: *CGS triangulation station w/brass disk set in standard concrete monument stamped "WATERLOO 1934".*

Physical Details: *Station is flush with ground surface in mowed lawn of public right of way.*

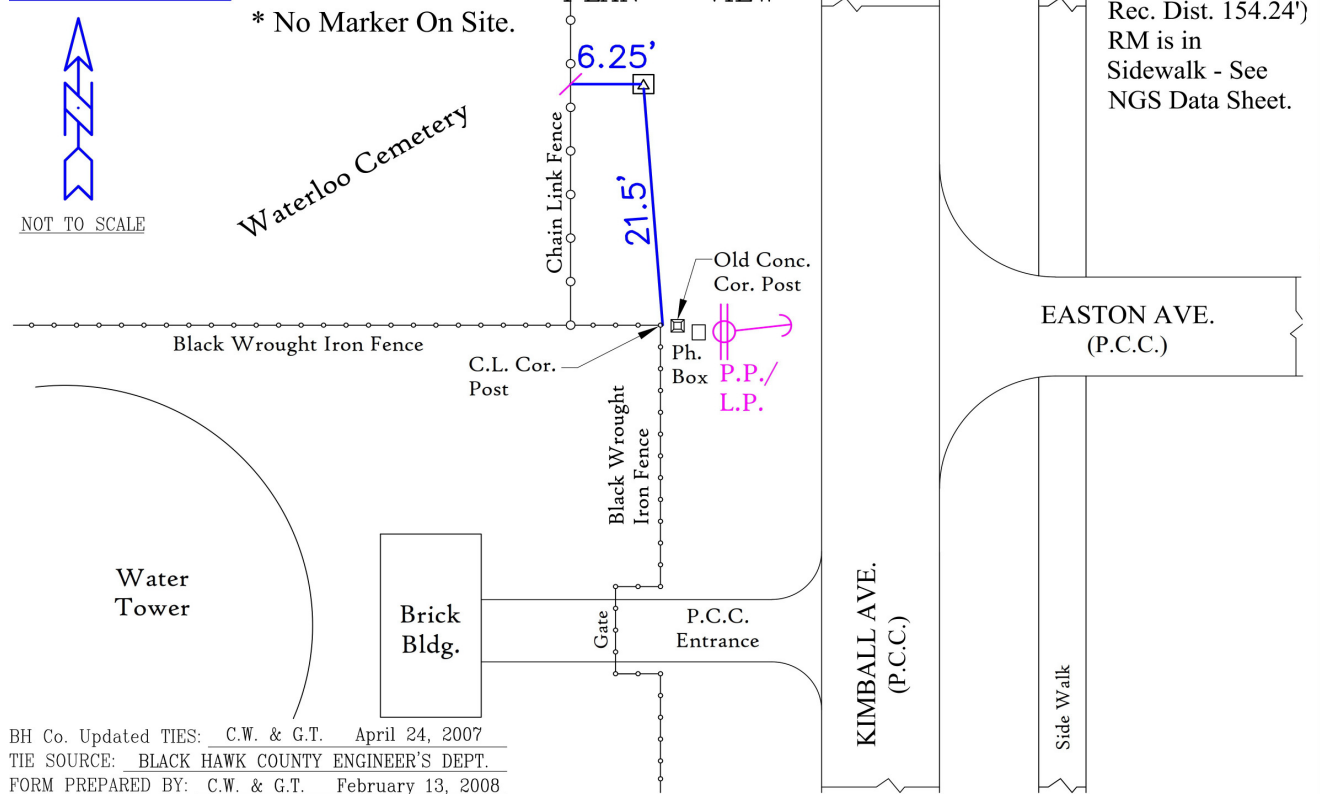
NAD 83(NA2011) Latitude: **N42°28'23.05200"** Longitude: **W92°21'25.77608"**
NAVD 88 Ortho Height: **950.065sft** Ellip. Ht: **847.457sft** Geoid18(Conus)

Horizontal Datum: NAD 83(NA2011) - Vertical Datum: NAVD 1988
Iowa North Zone (1401) Northing: **3637525.480sft** Easting: **5229560.278sft**
Mapping Angle: **0°46'28"** Combination Scale Factor: **0.9999105998**

Iowa Regional Coordinate System, Zone 5, Waterloo LCC

IaRCS Zone 5 Northing: **8835534.237sft** Easting: **15471087.498sft**
Mapping Angle: **-0°04'21"** Combination Scale Factor: **0.9999962355**

MONUMENT TIES:



This document was prepared by Dan Corbin, Inc. for Black Hawk County, Iowa.

7309



Facing South

