

Black Hawk County, Iowa

Units: US Survey Feet

12/01/2020

Point ID: **7215**Stamping on Disk: **2006-215**

Type of Monument: *Berntsen 3/4" fluted "Top Security" rod, 6ft long with 2.5" dia. aluminum survey cap, NGS style access cover.*

Physical Details: *Station is flush with ground surface located in mowed R.O.W. ditch.*

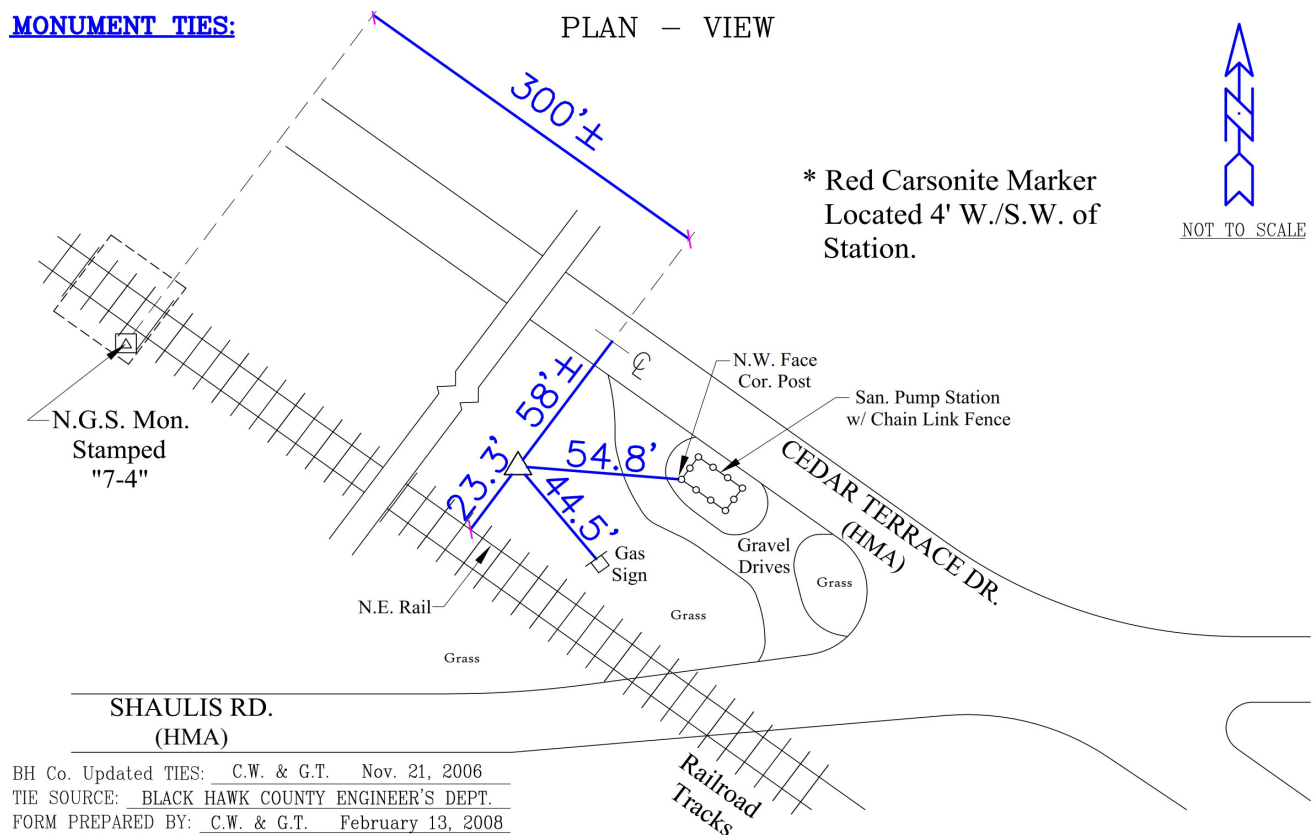
NAD 83(NA2011) Latitude: **N42°26'35.39073"** Longitude: **W92°17'09.80089"**
NAVD 88 Ortho Height: **838.350sft** Ellip. Ht: **736.166sft** **Geoid18(Conus)**

Horizontal Datum: NAD 83(NA2011) - Vertical Datum: NAVD 1988

Iowa North Zone (1401) Northing: **3626895.533sft** Easting: **5248897.670sft**
Mapping Angle: **0°49'22"** Combination Scale Factor: **0.9999178175**

Iowa Regional Coordinate System, Zone 5, Waterloo LCC

IaRCS Zone 5 Northing: **8824618.610sft** Easting: **15490267.250sft**
Mapping Angle: **-0°01'28"** Combination Scale Factor: **1.0000032942**

MONUMENT TIES:

This document was prepared by Dan Corbin, Inc. for Black Hawk County, Iowa.

7215



Facing Southwest

