

# Black Hawk County, Iowa

Units: US Survey Feet

12/01/2020

Point ID: **7213**

Stamping on Disk: **F-39 1934**

Type of Monument: *U.S. Coast & Geodetic Survey standard concrete monument w/brass cap stamped "F 39".*

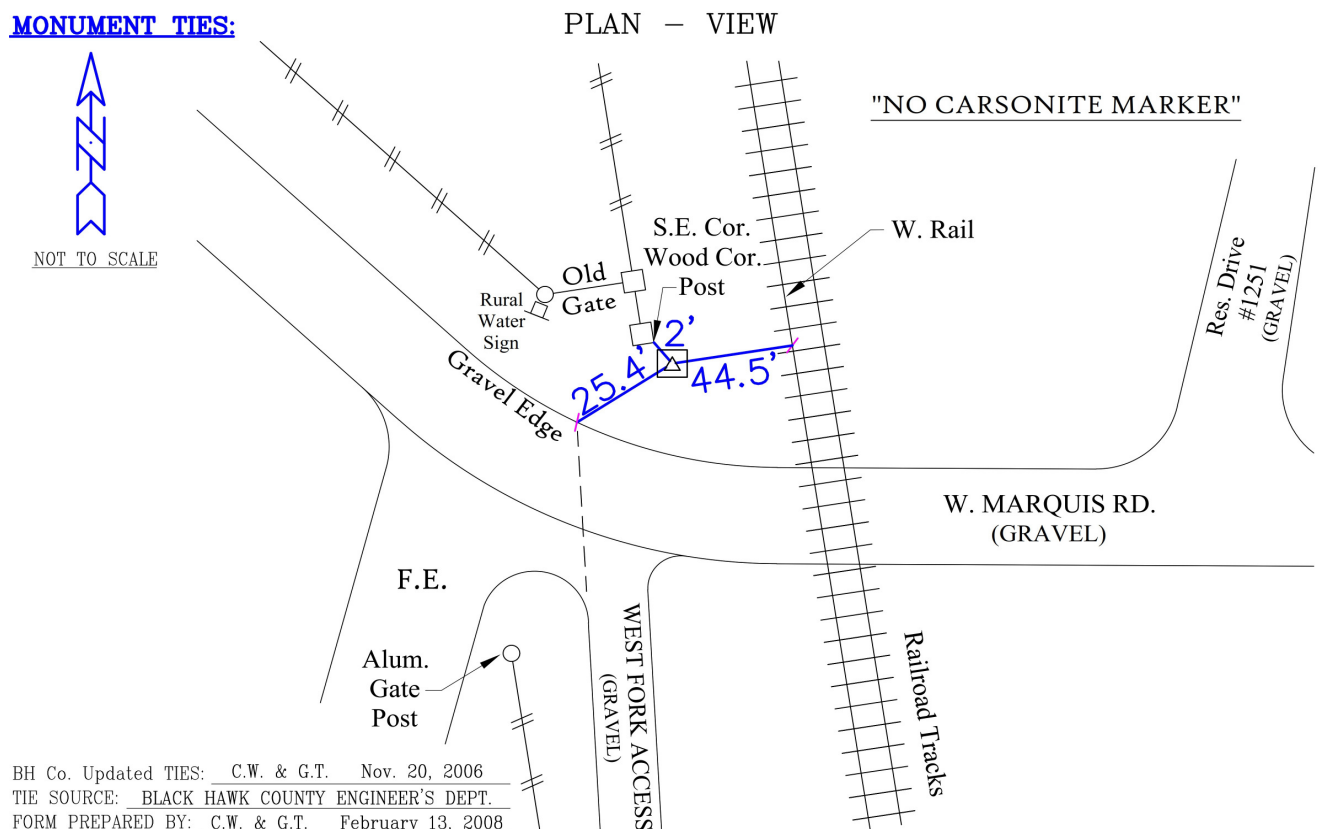
Physical Details: *Station is 5" +/- above ground surface located in flat backslope of ditch.*

NAD 83(NA2011) Latitude: **N42°38'32.49602"** Longitude: **W92°30'15.07434"**  
NAVD 88 Ortho Height: **881.820sft** Ellip. Ht: **778.204sft** Geoid18(Conus)

Horizontal Datum: NAD 83(NA2011) - Vertical Datum: NAVD 1988  
**Iowa North Zone (1401)** Northing: **3698713.739sft** Easting: **5189171.178sft**  
Mapping Angle: **0°40'30"** Combination Scale Factor: **0.9999082687**

Iowa Regional Coordinate System, Zone 5, Waterloo LCC  
**IaRCS Zone 5** Northing: **8897318.274sft** Easting: **15431604.072sft**  
Mapping Angle: **-0°10'20"** Combination Scale Factor: **0.9999948095**

## MONUMENT TIES:



*This document was prepared by Dan Corbin, Inc. for Black Hawk County, Iowa.*



7213



Facing East

