

Black Hawk County, Iowa

Units: US Survey Feet

12/01/2020

Point ID: **7211**Stamping on Disk: **2006-211**

Type of Monument: *Berntsen 3/4" fluted "Top Security" rod, 6ft long with 2.5" dia. aluminum survey cap, NGS style access cover.*

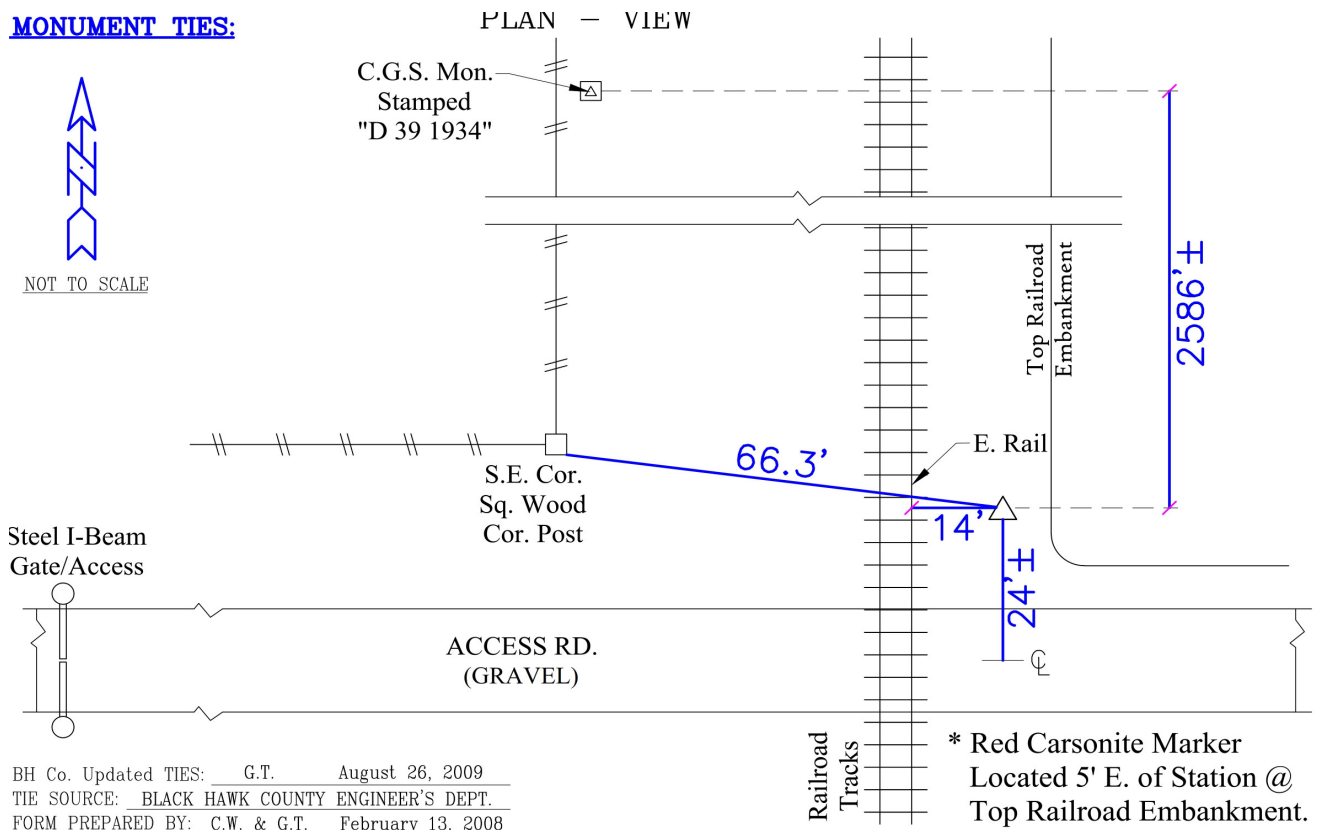
Physical Details: *Station is 2" +/- above ground surface located at northeast corner of access road & railroad crossing, behind locked gate.*

NAD 83(NA2011) Latitude: **N42°34'39.19026"** Longitude: **W92°30'04.32780"**
NAVD 88 Ortho Height: **868.440sft** Ellip. Ht: **764.740sft** **Geoid18(Conus)**

Horizontal Datum: NAD 83(NA2011) - Vertical Datum: NAVD 1988

Iowa North Zone (1401) Northing: **3675107.053sft** Easting: **5190253.319sft**Mapping Angle: **0°40'37"**Combination Scale Factor: **0.9999100460**

Iowa Regional Coordinate System, Zone 5, Waterloo LCC

IaRCS Zone 5 Northing: **8873696.129sft** Easting: **15432337.143sft**Mapping Angle: **-0°10'13"**Combination Scale Factor: **0.9999962401****MONUMENT TIES:**

This document was prepared by Dan Corbin, Inc. for Black Hawk County, Iowa.

7211



Facing East

