

Black Hawk County, Iowa

Units: US Survey Feet

12/01/2020

Point ID: **7209**Stamping on Disk: **2006-209**

Type of Monument: *Berntsen 3/4" fluted "Top Security" rod, 9ft long with 2.5" dia. aluminum survey cap, NGS style access cover.*

Physical Details: *Station is flush with ground surface located at TBKS in southwest Hwy. 218 overpass embankment.*

NAD 83(NA2011) Latitude: **N42°29'38.42353"** Longitude: **W92°20'37.01344"**
NAVD 88 Ortho Height: **866.743sft** Ellip. Ht: **764.151sft** **Geoid18(Conus)**

Horizontal Datum: NAD 83(NA2011) - Vertical Datum: NAVD 1988

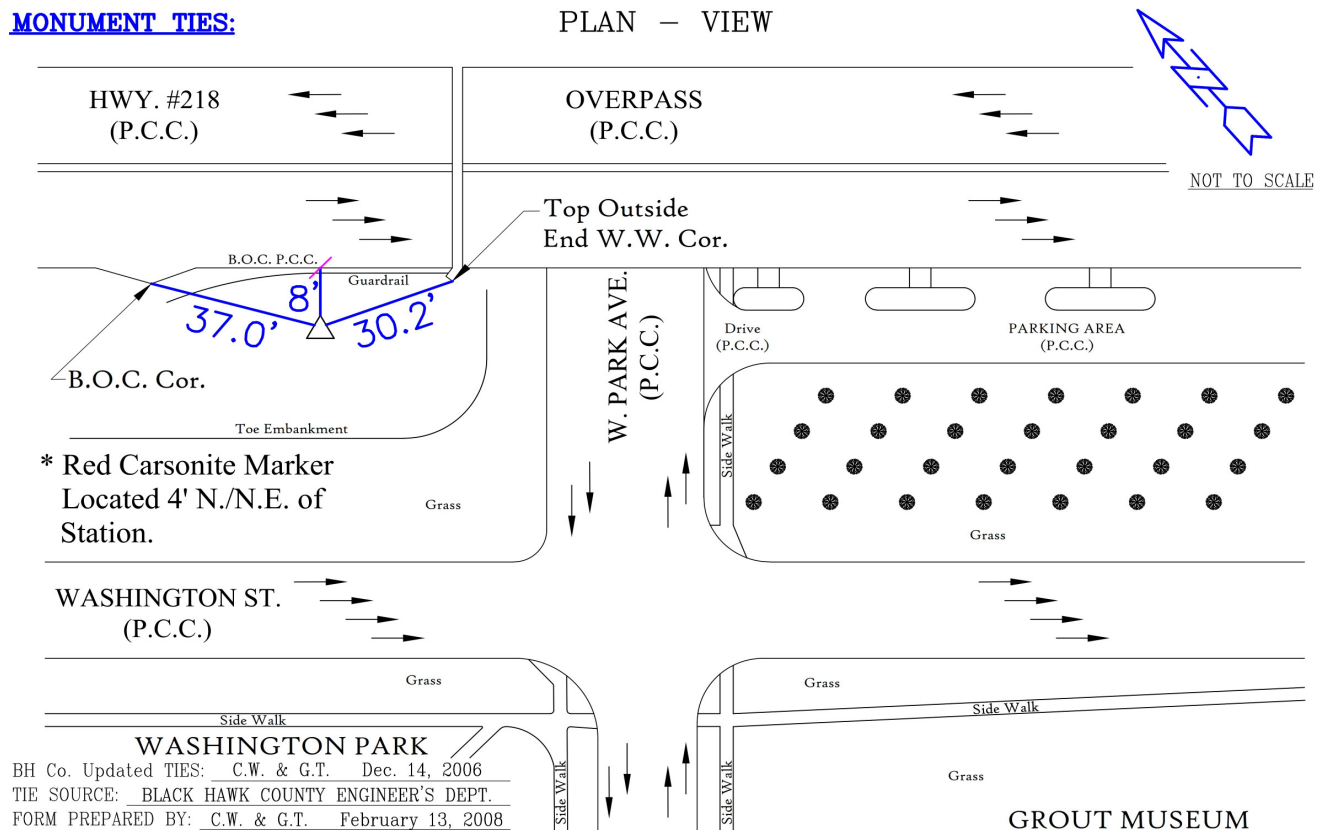
Iowa North Zone (1401) Northing: **3645204.269sft** Easting: **5233109.846sft**
Mapping Angle: **0°47'01"** Combination Scale Factor: **0.9999134136**

Iowa Regional Coordinate System, Zone 5, Waterloo LCC

IaRCS Zone 5 Northing: **8843160.360sft** Easting: **15474750.524sft**
Mapping Angle: **-0°03'48"** Combination Scale Factor: **0.9999991614**

MONUMENT TIES:

PLAN — VIEW



This document was prepared by Dan Corbin, Inc. for Black Hawk County, Iowa.

7209



Facing Northeast

