

Units: US Survey Feet

12/01/2020

Point ID: 7208

Stamping on Disk: **S-11**

Type of Monument: *Berntsen 5/8" fluted "Top Security" rod, 6ft long with 2.5" dia. aluminum survey cap, NGS style access cover.*

Physical Details: *Station is 2" +/- above ground surface at TBKS.*

NAD 83(NA2011) Latitude: **N42°36'31.43520"** Longitude: **W92°05'47.56311"**
NAVD 88 Ortho Height: **1000.020sft** Ellip. Ht: **898.526sft** **Geoid18(Conus)**

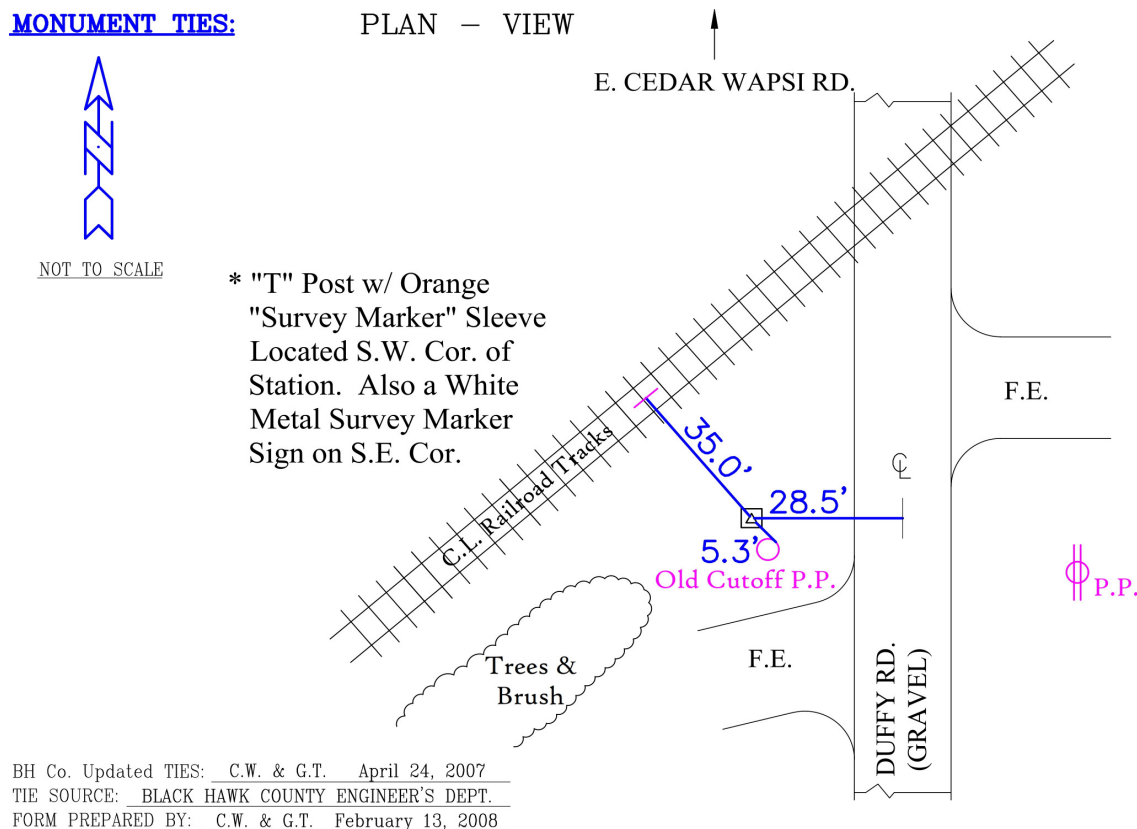
Horizontal Datum: NAD 83(NA2011) - Vertical Datum: NAVD 1988
Iowa North Zone (1401) Northing: **3688016.580**sft Easting: **5299041.180**sft
 Mapping Angle: **0°57'04"** Combination Scale Factor: **0.9999029472**

Iowa Regional Coordinate System, Zone 5, Waterloo LCC

laRCS Zone 5 Northing: **8884996.752sft** Easting: **15541313.388sft**
Mapping Angle: **0°06'14"** Combination Scale Factor: **0.9999893075**

MONUMENT TIES:

PLAN - VIEW



This document was prepared by Dan Corbin, Inc. for Black Hawk County, Iowa.

7208



Facing West

