

# Black Hawk County, Iowa

Units: US Survey Feet

12/01/2020

Point ID: **7201**

Stamping on Disk: **C-39 1934**

Type of Monument: *Berntsen 5/8" fluted "Top Security" rod, 6ft long with 2.5" dia. aluminum survey cap, NGS style access cover.*

Physical Details: *Located northwest of Cedar Falls, N-NE of Union Road at city limits, to E-SE along R.R. in northerly railroad R.O.W.*

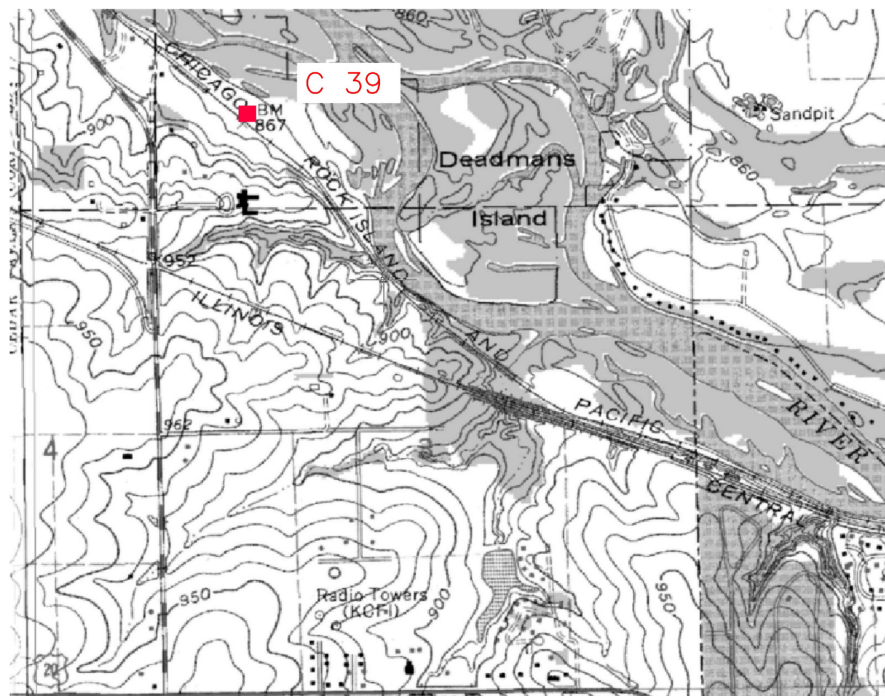
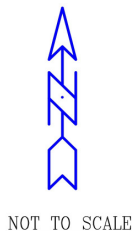
NAD 83(NA2011) Latitude: **N42°33'29.88213"** Longitude: **W92°29'30.46734"**  
NAVD 88 Ortho Height: **867.306sft** Ellip. Ht: **763.638sft** **Geoid18(Conus)**

Horizontal Datum: NAD 83(NA2011) - Vertical Datum: NAVD 1988  
**Iowa North Zone (1401)** Northing: **3668121.525sft** Easting: **5192870.076sft**  
Mapping Angle: **0°41'00"** Combination Scale Factor: **0.9999106808**

Iowa Regional Coordinate System, Zone 5, Waterloo LCC  
**IaRCS Zone 5** Northing: **8866672.072sft** Easting: **15434850.553sft**  
Mapping Angle: **-0°09'50"** Combination Scale Factor: **0.9999967720**

## MONUMENT TIES:

PLAN - VIEW



BH Co. Updated TIES: C.W. & G.T. Jan. 25, 2006  
TIE SOURCE: NGS DATA SHEET / B.H. CO. RECOVERED  
FORM PREPARED BY: C.W. & G.T. February 14, 2008

*This document was prepared by Dan Corbin, Inc. for Black Hawk County, Iowa.*