

Black Hawk County, Iowa**12/01/2020**

Units: US Survey Feet

Point ID: **7174**Stamping on Disk: **2006-174**

Type of Monument: *Berntsen 3/4" fluted "Top Security" rod, 6ft long with 2.5" dia. aluminum survey cap, NGS style access cover.*

Physical Details: *Station is in Tama County and is flush with ground surface located in TBKS.*

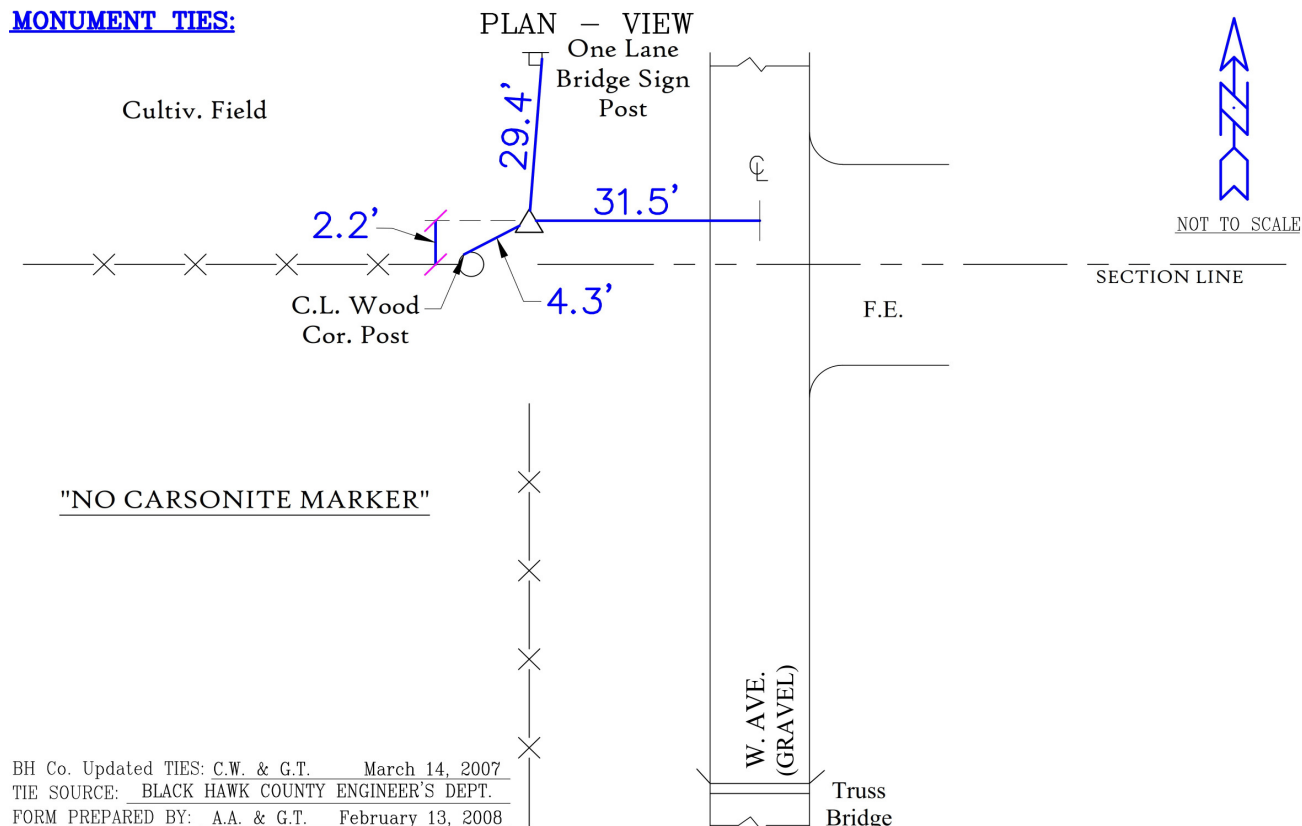
NAD 83(NA2011) Latitude: **N42°15'15.51824"** Longitude: **W92°20'17.01741"**
NAVD 88 Ortho Height: **850.383sft** Ellip. Ht: **747.574sft** **Geoid18(Conus)**

Horizontal Datum: NAD 83(NA2011) - Vertical Datum: NAVD 1988

Iowa North Zone (1401) Northing: **3557882.620sft** Easting: **5235808.250sft**
Mapping Angle: **0°47'15"** Combination Scale Factor: **0.9999355012**

Iowa Regional Coordinate System, Zone 5, Waterloo LCC

IaRCS Zone 5 Northing: **8755800.924sft** Easting: **15476157.685sft**
Mapping Angle: **-0°03'35"** Combination Scale Factor: **1.0000199730**

MONUMENT TIES:

This document was prepared by Dan Corbin, Inc. for Black Hawk County, Iowa.

7174



Facing West

