

**Black Hawk County, Iowa**

Units: US Survey Feet

**12/01/2020**Point ID: **7172**Stamping on Disk: **2000-005**

Type of Monument: *Berntsen 5/8" fluted "Top Security" rod, 6ft long with 2.5" dia. aluminum survey cap, NGS style access cover.*

Physical Details: *Station is flush with ground surface located in northeast corner of field entrance just south of gate post.*

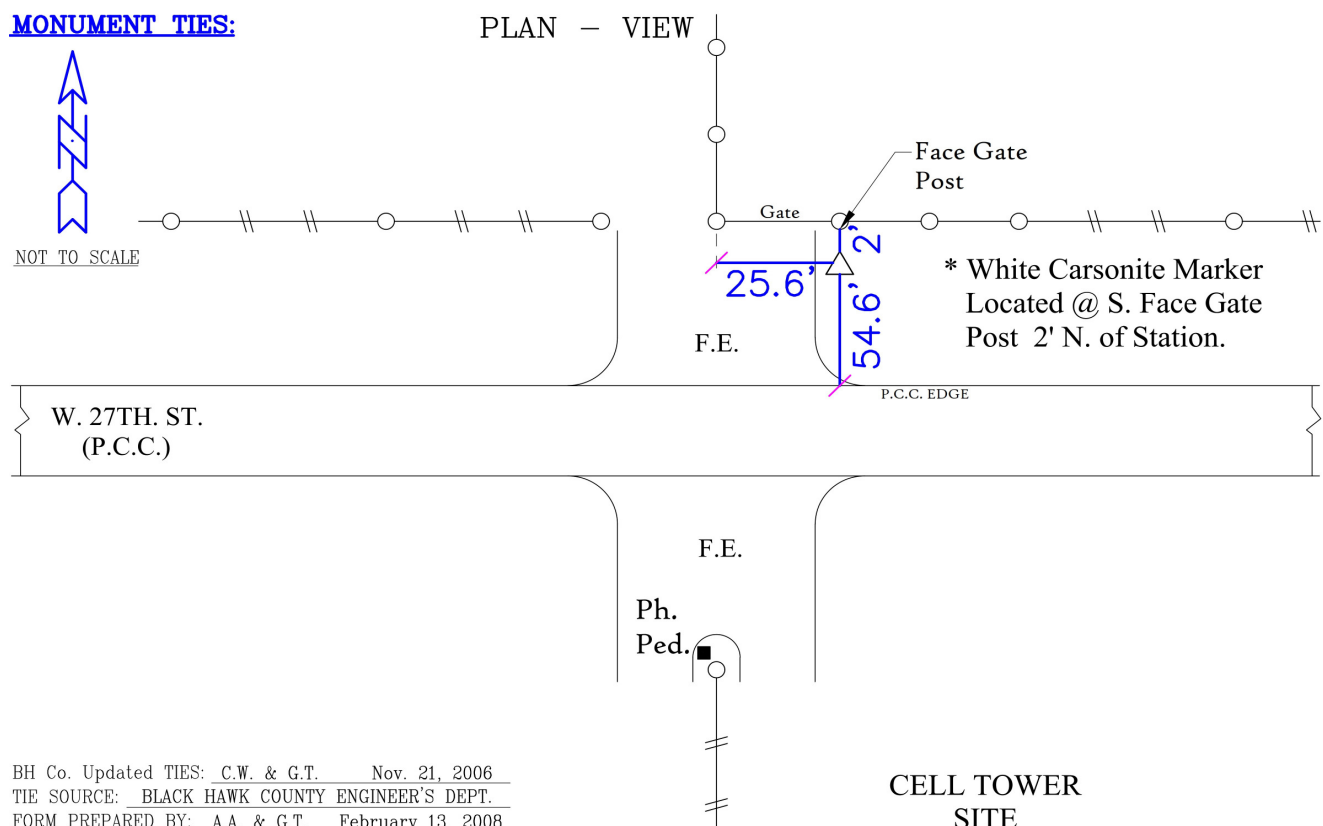
NAD 83(NA2011) Latitude: **N42°30'48.04600"** Longitude: **W92°28'48.44524"**  
NAVD 88 Ortho Height: **947.372sft** Ellip. Ht: **843.787sft** **Geoid18(Conus)**

Horizontal Datum: NAD 83(NA2011) - Vertical Datum: NAVD 1988

**Iowa North Zone (1401)** Northing: **3651777.759sft** Easting: **5196212.330sft**  
Mapping Angle: **0°41'28"** Combination Scale Factor: **0.9999086462**

Iowa Regional Coordinate System, Zone 5, Waterloo LCC

**IaRCS Zone 5** Northing: **8850279.269sft** Easting: **15437951.072sft**  
Mapping Angle: **-0°09'21"** Combination Scale Factor: **0.9999944970**

**MONUMENT TIES:**

*This document was prepared by Dan Corbin, Inc. for Black Hawk County, Iowa.*

7172



Facing North

