

Black Hawk County, Iowa

Units: US Survey Feet

12/01/2020

Point ID: **7170**Stamping on Disk: **99-170**

Type of Monument: *Berntsen 5/8" fluted "Top Security" rod, 6ft long with 2.5" dia. aluminum survey cap, NGS style access cover.*

Physical Details: *Station is flush with ground surface located in mowed R.O.W. lawn southwest of the Black Hawk Co. Secondary Roads Maintenance Yard.*

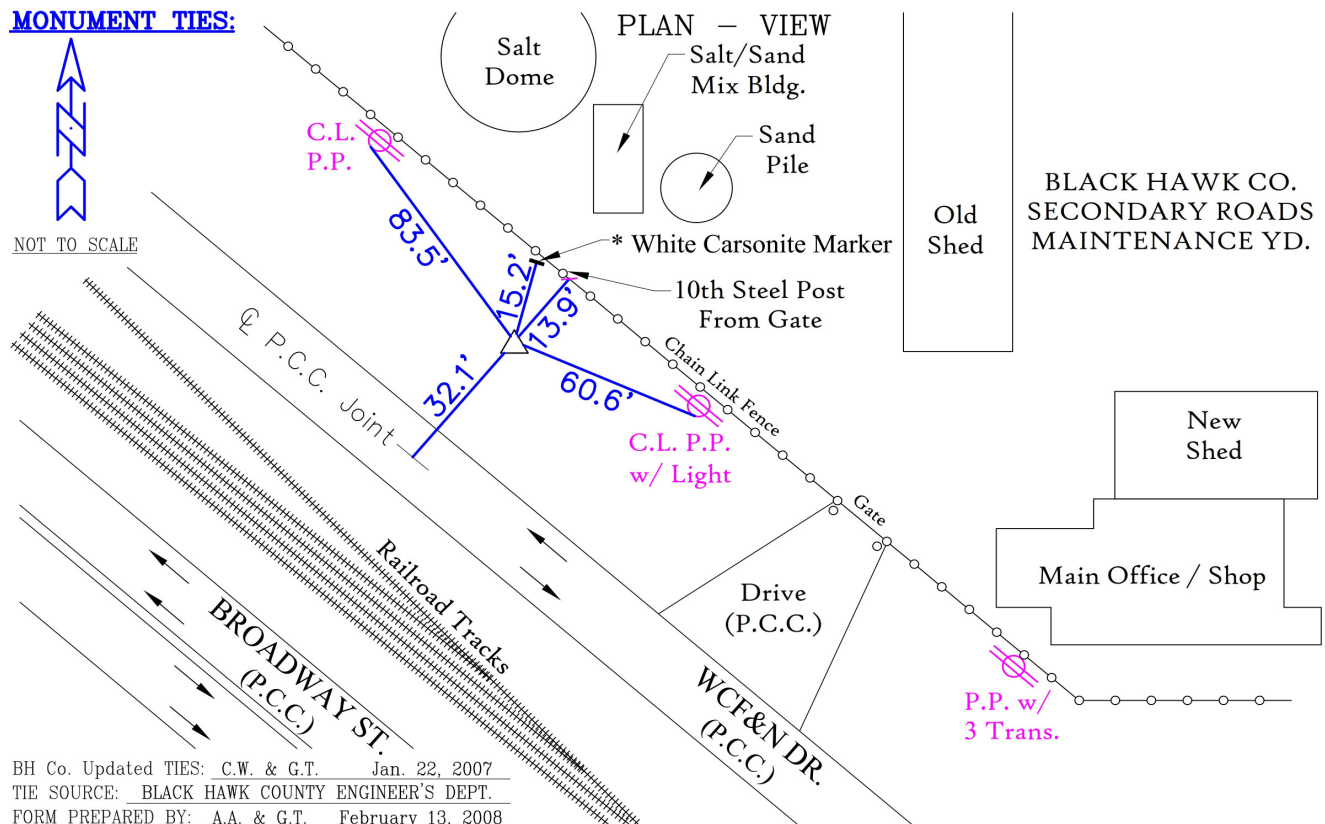
NAD 83(NA2011) Latitude: **N42°31'43.81688"** Longitude: **W92°21'49.77489"**
NAVD 88 Ortho Height: **855.963sft** Ellip. Ht: **753.101sft** **Geoid18(Conus)**

Horizontal Datum: NAD 83(NA2011) - Vertical Datum: NAVD 1988

Iowa North Zone (1401) Northing: **3657822.749sft** Easting: **5227488.841sft**
Mapping Angle: **0°46'12"** Combination Scale Factor: **0.9999122926**

Iowa Regional Coordinate System, Zone 5, Waterloo LCC

IaRCS Zone 5 Northing: **8855861.658sft** Easting: **15469316.233sft**
Mapping Angle: **-0°04'38"** Combination Scale Factor: **0.9999982264**



This document was prepared by Dan Corbin, Inc. for Black Hawk County, Iowa.

7170



Facing Northwest

