

Black Hawk County, Iowa**12/01/2020**

Units: US Survey Feet

Point ID: **7167**Stamping on Disk: **2006-167**

Type of Monument: *Berntsen 5/8" fluted "Top Security" rod, 6ft long with 2.5" dia. aluminum survey cap, NGS style access cover.*

Physical Details: *Station is flush with ground surface located in southeast edge of field entrance.*

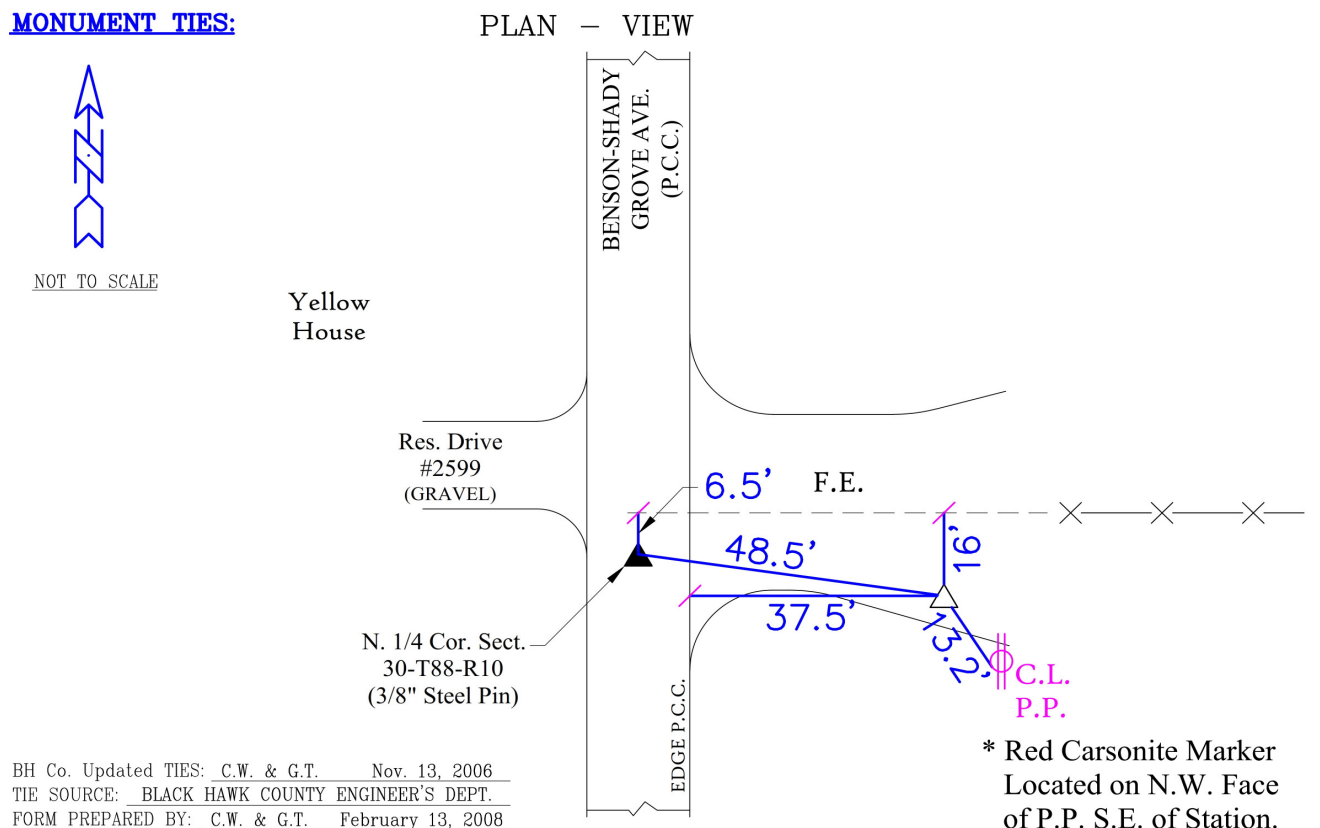
NAD 83(NA2011) Latitude: **N42°24'48.69268"** Longitude: **W92°03'17.52470"**
NAVD 88 Ortho Height: **950.553sft** Ellip. Ht: **849.227sft** **Geoid18(Conus)**

Horizontal Datum: NAD 83(NA2011) - Vertical Datum: NAVD 1988

Iowa North Zone (1401) Northing: **3617077.530sft** Easting: **5311475.085sft**
Mapping Angle: **0°58'46"** Combination Scale Factor: **0.9999145617**

Iowa Regional Coordinate System, Zone 5, Waterloo LCC

IaRCS Zone 5 Northing: **8813875.501sft** Easting: **15552697.988sft**
Mapping Angle: **0°07'56"** Combination Scale Factor: **0.9999998800**

MONUMENT TIES:

This document was prepared by Dan Corbin, Inc. for Black Hawk County, Iowa.

7167



Facing East

