

Black Hawk County, Iowa

Units: US Survey Feet

12/01/2020

Point ID: **7166**Stamping on Disk: **2006-166**

Type of Monument: *Berntsen 5/8" fluted "Top Security" rod, 6ft long with 2.5" dia. aluminum survey cap, NGS style access cover.*

Physical Details: *Station is flush with ground surface located in centerline of mowed ditch.*

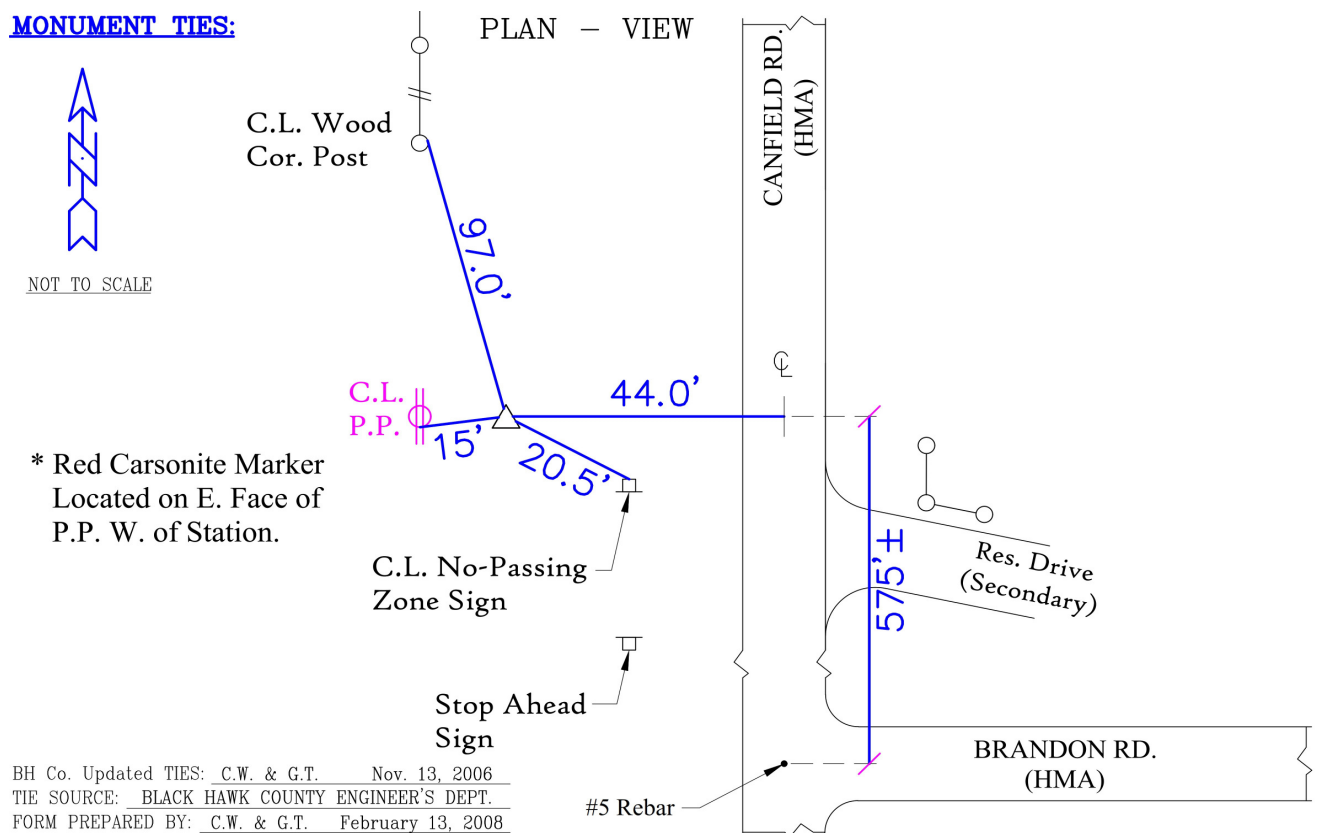
NAD 83(NA2011) Latitude: **N42°20'24.18372"** Longitude: **W92°09'44.82807"**
NAVD 88 Ortho Height: **826.382sft** Ellip. Ht: **724.655sft** **Geoid18(Conus)**

Horizontal Datum: NAD 83(NA2011) - Vertical Datum: NAVD 1988

Iowa North Zone (1401) Northing: **3589826.981sft** Easting: **5282850.538sft**
Mapping Angle: **0°54'23"** Combination Scale Factor: **0.9999269860**

Iowa Regional Coordinate System, Zone 5, Waterloo LCC

IaRCS Zone 5 Northing: **8787048.894sft** Easting: **15523671.170sft**
Mapping Angle: **0°03'34"** Combination Scale Factor: **1.0000119136**

MONUMENT TIES:

This document was prepared by Dan Corbin, Inc. for Black Hawk County, Iowa.

7166



Facing West

