

**Black Hawk County, Iowa****12/01/2020**

Units: US Survey Feet

Point ID: **7165**Stamping on Disk: **2006-165**

Type of Monument: *Berntsen 5/8" fluted "Top Security" rod, 6ft long with 2.5" dia. aluminum survey cap, NGS style access cover.*

Physical Details: *Station is flush with ground surface located at TBKS of mowed ditch.*

NAD 83(NA2011) Latitude: **N42°24'49.31893"** Longitude: **W92°12'06.99742"**  
NAVD 88 Ortho Height: **907.495sft** Ellip. Ht: **805.653sft** Geoid18(Conus)

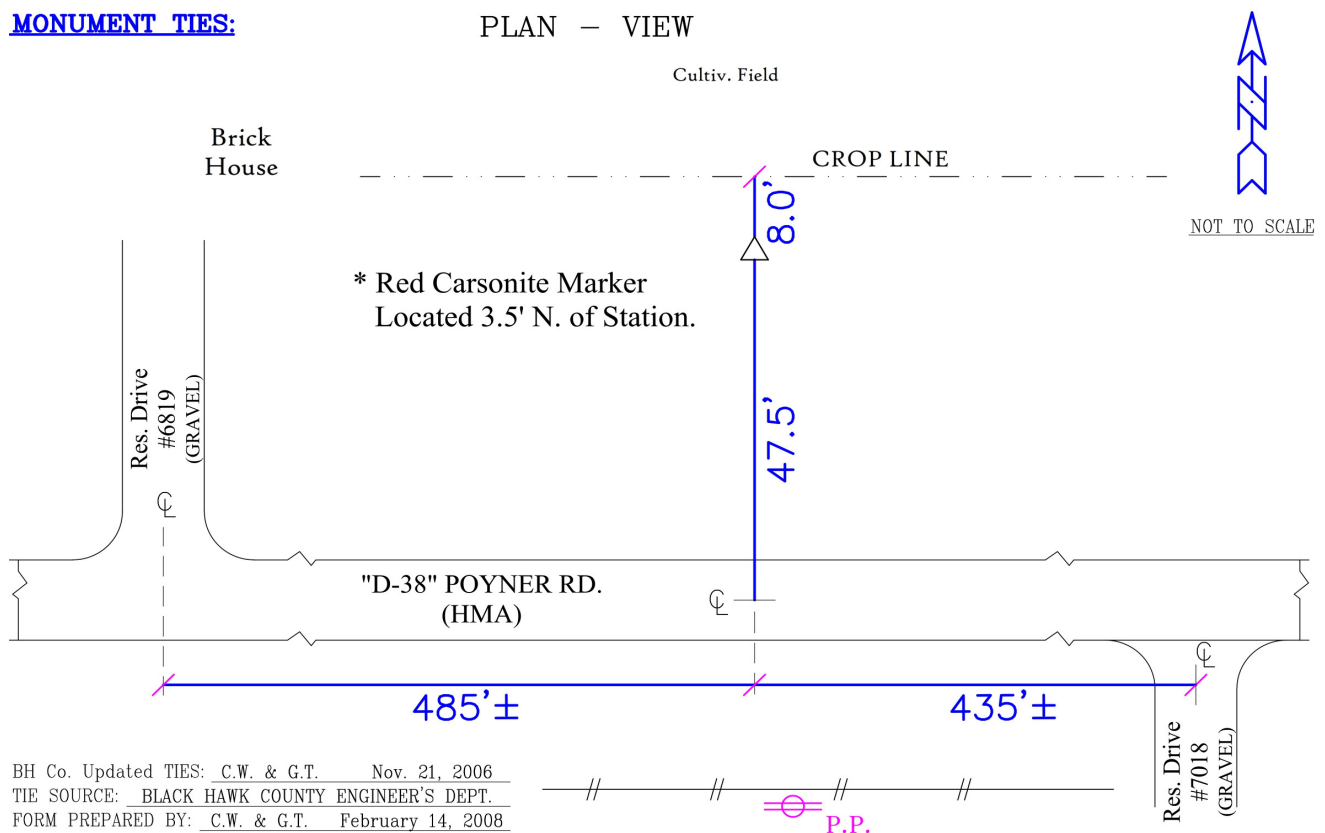
Horizontal Datum: NAD 83(NA2011) - Vertical Datum: NAVD 1988

**Iowa North Zone (1401)** Northing: **3616496.569sft** Easting: **5271762.942sft**Mapping Angle: **0°52'47"** Combination Scale Factor: **0.9999166310**

Iowa Regional Coordinate System, Zone 5, Waterloo LCC

**IaRCS Zone 5** Northing: **8813881.790sft** Easting: **15512978.208sft**Mapping Angle: **0°01'57"** Combination Scale Factor: **1.0000019504****MONUMENT TIES:**

PLAN — VIEW



*This document was prepared by Dan Corbin, Inc. for Black Hawk County, Iowa.*

7165



Facing North

