

Black Hawk County, Iowa

Units: US Survey Feet

12/01/2020

Point ID: **7164**Stamping on Disk: **2006-164**

Type of Monument: *Berntsen 5/8" fluted "Top Security" rod, 6ft long with 2.5" dia. aluminum survey cap, NGS style access cover.*

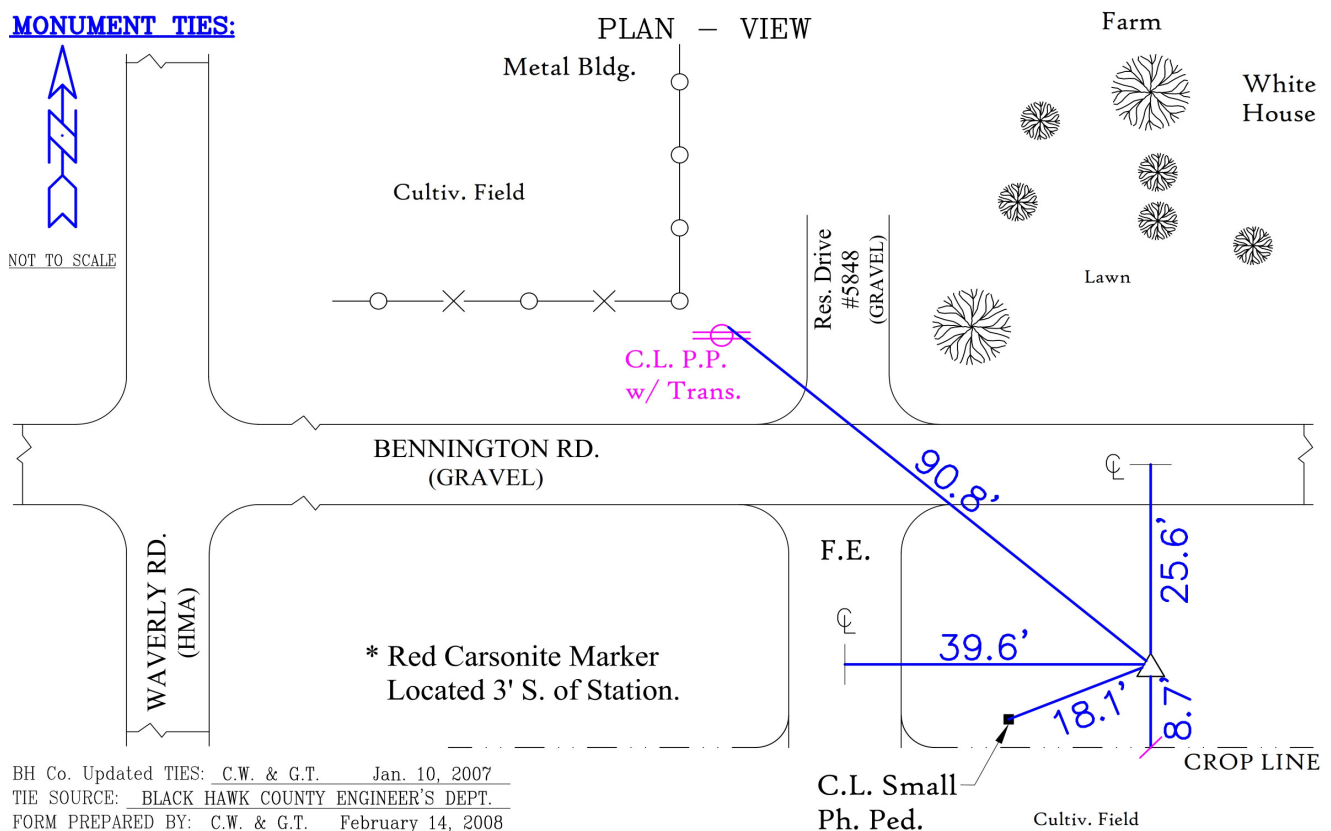
Physical Details: *Station is flush with ground surface located in centerline of ditch bottom.*

NAD 83(NA2011) Latitude: **N42°35'57.04156"** Longitude: **W92°27'12.19194"**
NAVD 88 Ortho Height: **889.031sft** Ellip. Ht: **785.556sft** Geoid18(Conus)

Horizontal Datum: NAD 83(NA2011) - Vertical Datum: NAVD 1988
Iowa North Zone (1401) Northing: **3683143.189sft** Easting: **5203033.124sft**
Mapping Angle: **0°42'34"** Combination Scale Factor: **0.9999085312**

Iowa Regional Coordinate System, Zone 5, Waterloo LCC

IaRCS Zone 5 Northing: **8881543.119sft** Easting: **15445235.476sft**
Mapping Angle: **-0°08'16"** Combination Scale Factor: **0.9999948409**



This document was prepared by Dan Corbin, Inc. for Black Hawk County, Iowa.

7164



Facing South

