

Black Hawk County, Iowa

Units: US Survey Feet

12/01/2020

Point ID: **7162**Stamping on Disk: **2006-162**

Type of Monument: *Berntsen 3/4" fluted "Top Security" rod, 6ft long with 2.5" dia. aluminum survey cap, NGS style access cover.*

Physical Details: *Station is flush with ground surface located on flat area at TBKS between fence and stump.*

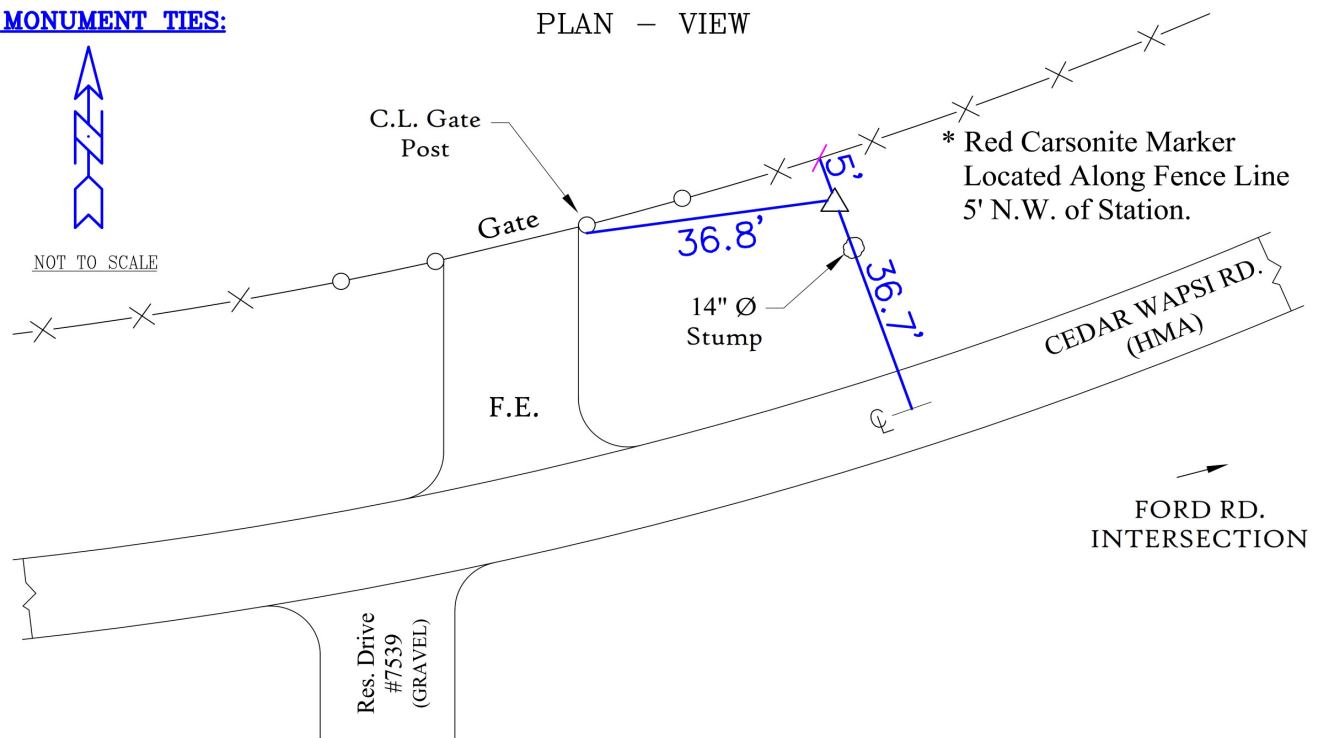
NAD 83(NA2011) Latitude: **N42°36'44.79527"** Longitude: **W92°29'04.90530"**
NAVD 88 Ortho Height: **876.947sft** Ellip. Ht: **773.362sft** **Geoid18(Conus)**

Horizontal Datum: NAD 83(NA2011) - Vertical Datum: NAVD 1988

Iowa North Zone (1401) Northing: **3687874.201sft** Easting: **5194545.984sft**
Mapping Angle: **0°41'17"** Combination Scale Factor: **0.9999088653**

Iowa Regional Coordinate System, Zone 5, Waterloo LCC

IaRCS Zone 5 Northing: **8886399.513sft** Easting: **15436818.483sft**
Mapping Angle: **-0°09'32"** Combination Scale Factor: **0.9999952459**

MONUMENT TIES:

BH Co. Updated TIES: C.W. & G.T. Nov. 20, 2006
TIE SOURCE: BLACK HAWK COUNTY ENGINEER'S DEPT.
FORM PREPARED BY: C.W. & G.T. February 14, 2008

This document was prepared by Dan Corbin, Inc. for Black Hawk County, Iowa.

7162



Facing North

