

Black Hawk County, Iowa

Units: US Survey Feet

12/01/2020

Point ID: **7161**Stamping on Disk: **2006-161**

Type of Monument: *Berntsen 3/4" fluted "Top Security" rod, 6ft long with 2.5" dia. aluminum survey cap, NGS style access cover.*

Physical Details: *Station is flush with ground surface located on northeast corner of levee / access road.*

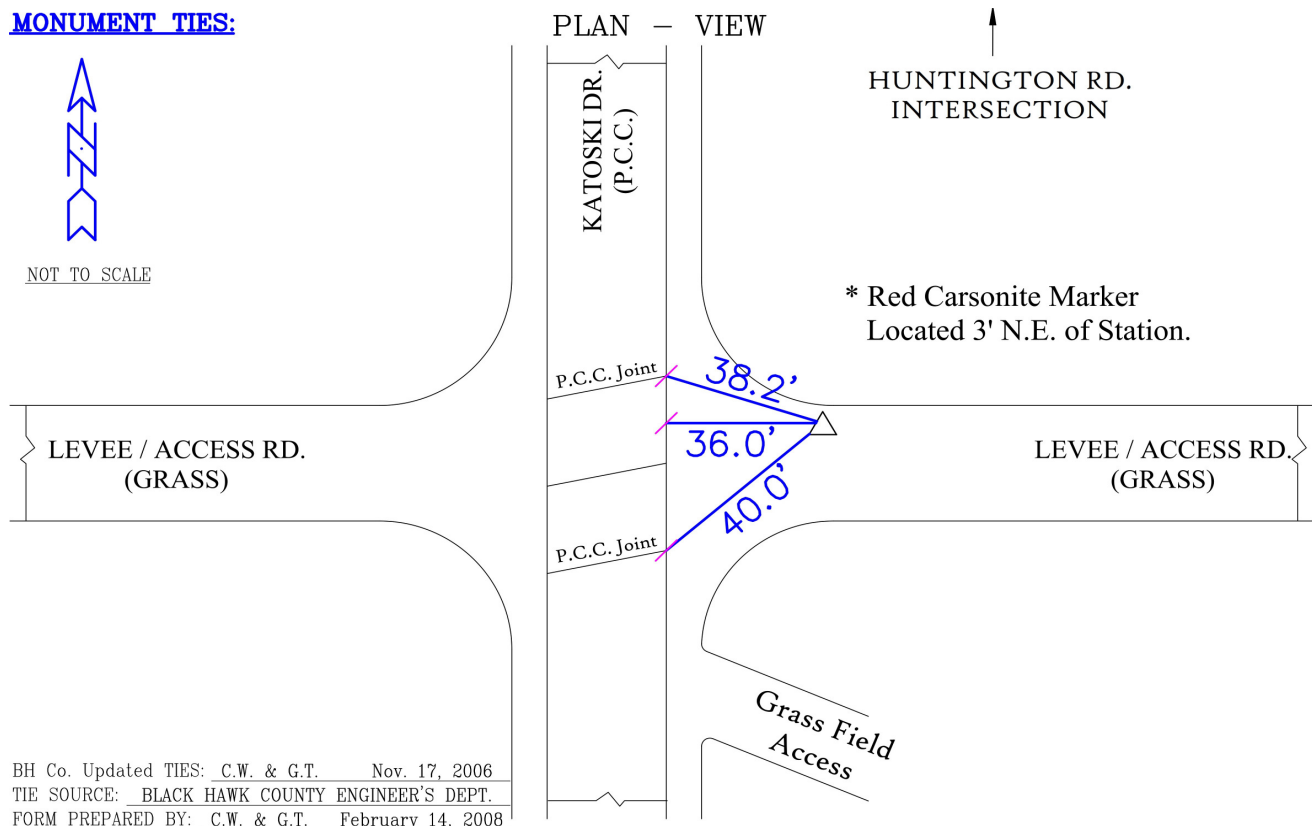
NAD 83(NA2011) Latitude: **N42°29'15.44497"** Longitude: **W92°23'46.91984"**
NAVD 88 Ortho Height: **863.490sft** Ellip. Ht: **760.532sft** **Geoid18(Conus)**

Horizontal Datum: NAD 83(NA2011) - Vertical Datum: NAVD 1988

Iowa North Zone (1401) Northing: **3642688.200sft** Easting: **5218914.671sft**
Mapping Angle: **0°44'53"** Combination Scale Factor: **0.9999139286**

Iowa Regional Coordinate System, Zone 5, Waterloo LCC

IaRCS Zone 5 Northing: **8840854.245sft** Easting: **15460518.480sft**
Mapping Angle: **-0°05'57"** Combination Scale Factor: **0.9999996424**

MONUMENT TIES:

This document was prepared by Dan Corbin, Inc. for Black Hawk County, Iowa.

7161



Facing East

