

**Black Hawk County, Iowa**  
Units: US Survey Feet

**12/01/2020**

Point ID: **7159**  
Stamping on Disk: **2006-159**

Type of Monument: *Berntsen 3/4" fluted "Top Security" rod, 6ft long with 2.5" dia. aluminum survey cap, NGS style access cover.*

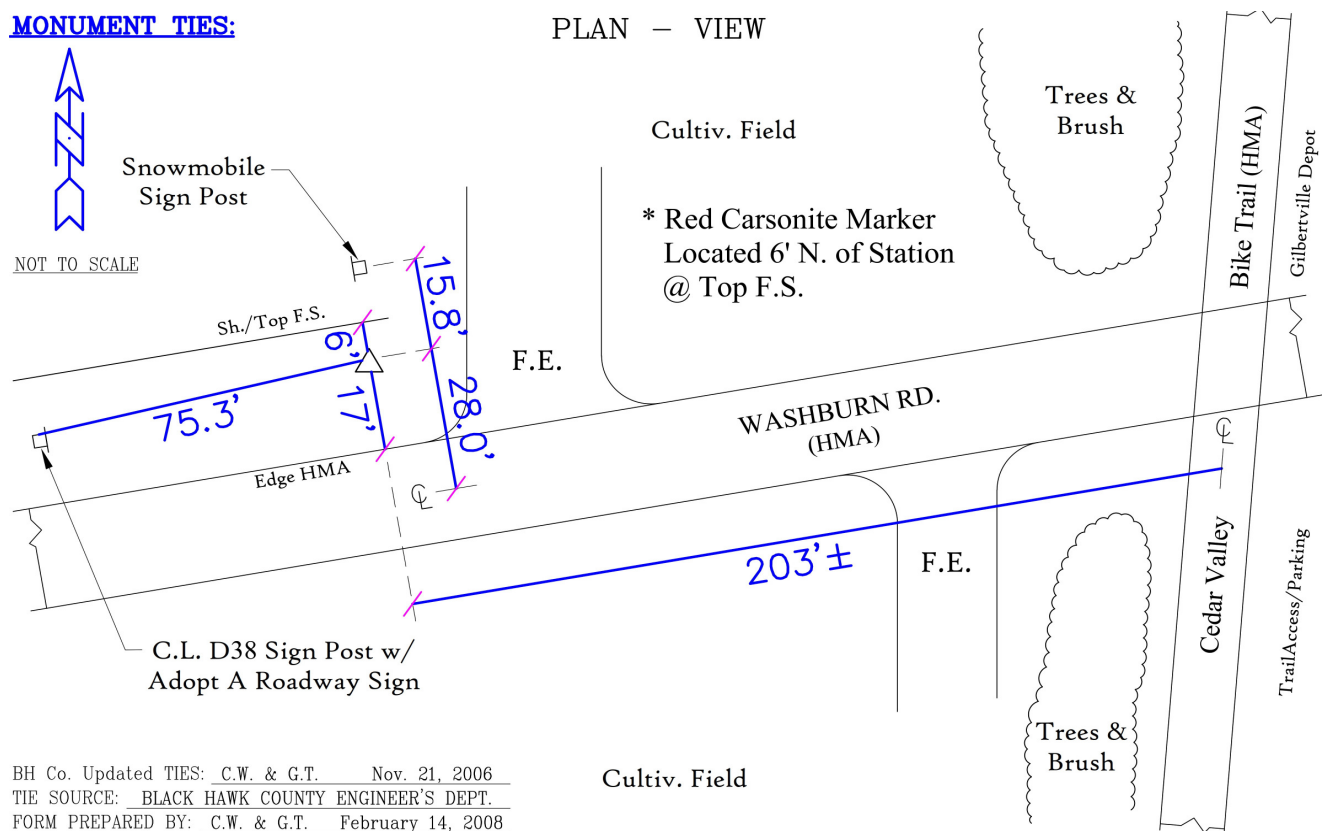
Physical Details: *Station is flush with ground surface located in north shoulder of road.*

NAD 83(NA2011) Latitude: **N42°24'54.32481"** Longitude: **W92°13'26.08895"**  
NAVD 88 Ortho Height: **822.140sft** Ellip. Ht: **720.198sft** **Geoid18(Conus)**

Horizontal Datum: NAD 83(NA2011) - Vertical Datum: NAVD 1988  
**Iowa North Zone (1401)** Northing: **3616912.930sft** Easting: **5265823.244sft**  
Mapping Angle: **0°51'53"** Combination Scale Factor: **0.9999206088**

Iowa Regional Coordinate System, Zone 5, Waterloo LCC  
**IaRCS Zone 5** Northing: **8814385.971sft** Easting: **15507044.809sft**  
Mapping Angle: **0°01'04"** Combination Scale Factor: **1.0000059360**

**MONUMENT TIES:**



*This document was prepared by Dan Corbin, Inc. for Black Hawk County, Iowa.*



7159



Facing North

