

Black Hawk County, Iowa

Units: US Survey Feet

12/01/2020

Point ID: **7157**Stamping on Disk: **94-157**

Type of Monument: *Berntsen 5/8" fluted "Top Security" rod, 6ft long with 2.5" dia. aluminum survey cap, NGS style access cover.*

Physical Details: *Station is flush with ground surface located in front mowed lawn of Evansdale City Hall.*

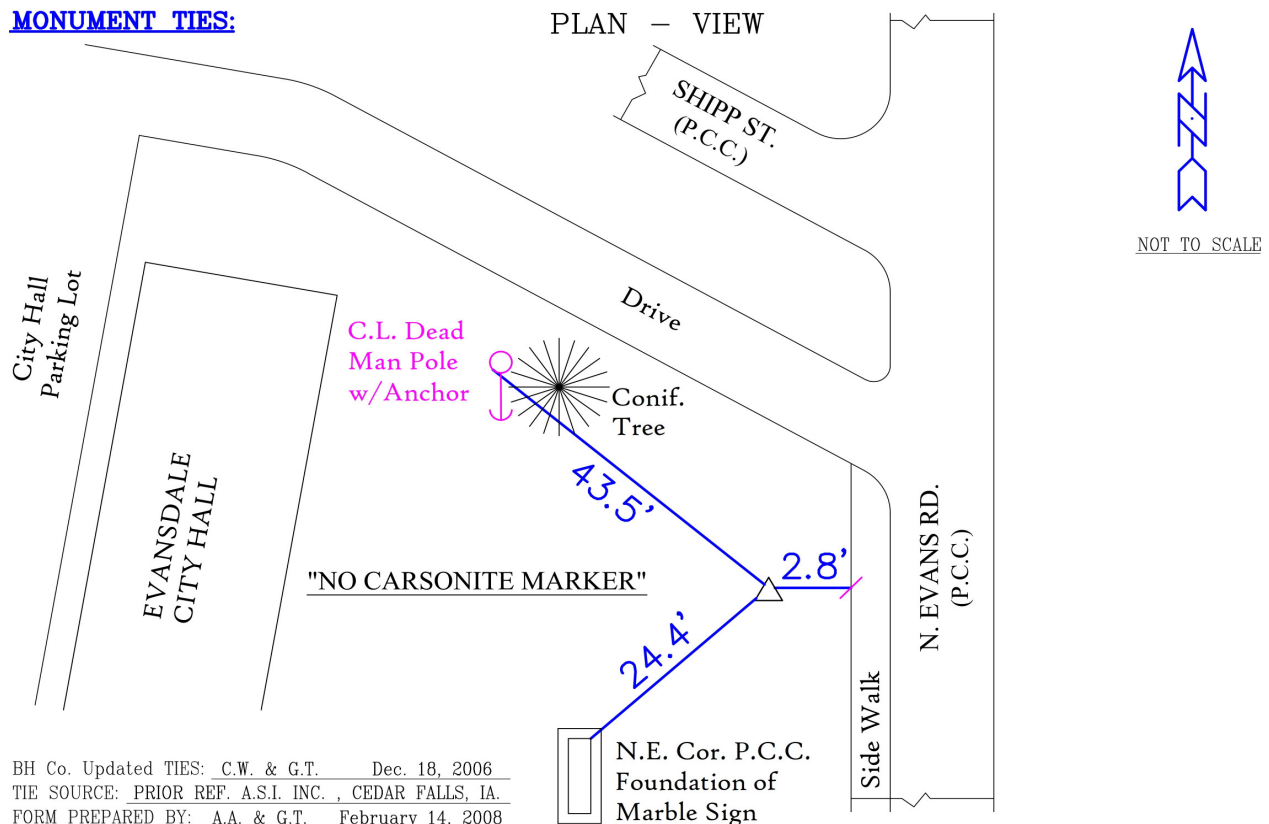
NAD 83(NA2011) Latitude: **N42°28'41.60127"** Longitude: **W92°17'17.54593"**
NAVD 88 Ortho Height: **843.074sft** Ellip. Ht: **740.859sft** **Geoid18(Conus)**

Horizontal Datum: NAD 83(NA2011) - Vertical Datum: NAVD 1988

Iowa North Zone (1401) Northing: **3639662.070sft** Easting: **5248133.910sft**
Mapping Angle: **0°49'17"** Combination Scale Factor: **0.9999153951**

Iowa Regional Coordinate System, Zone 5, Waterloo LCC

IaRCS Zone 5 Northing: **8837396.137sft** Easting: **15489692.283sft**
Mapping Angle: **-0°01'33"** Combination Scale Factor: **1.0000010588**

MONUMENT TIES:

This document was prepared by Dan Corbin, Inc. for Black Hawk County, Iowa.

7157



Facing West

