

Black Hawk County, Iowa

Units: US Survey Feet

12/01/2020

Point ID: **7155**Stamping on Disk: **2009-155R**

Type of Monument: *Berntsen 5/8" fluted "Top Security" rod, 6ft long with 2.5" dia. aluminum survey cap, NGS style access cover.*

Physical Details: *Station is flush with ground surface located in east R.O.W. at top of backslope along east edge of field line, due south of fence end post.*

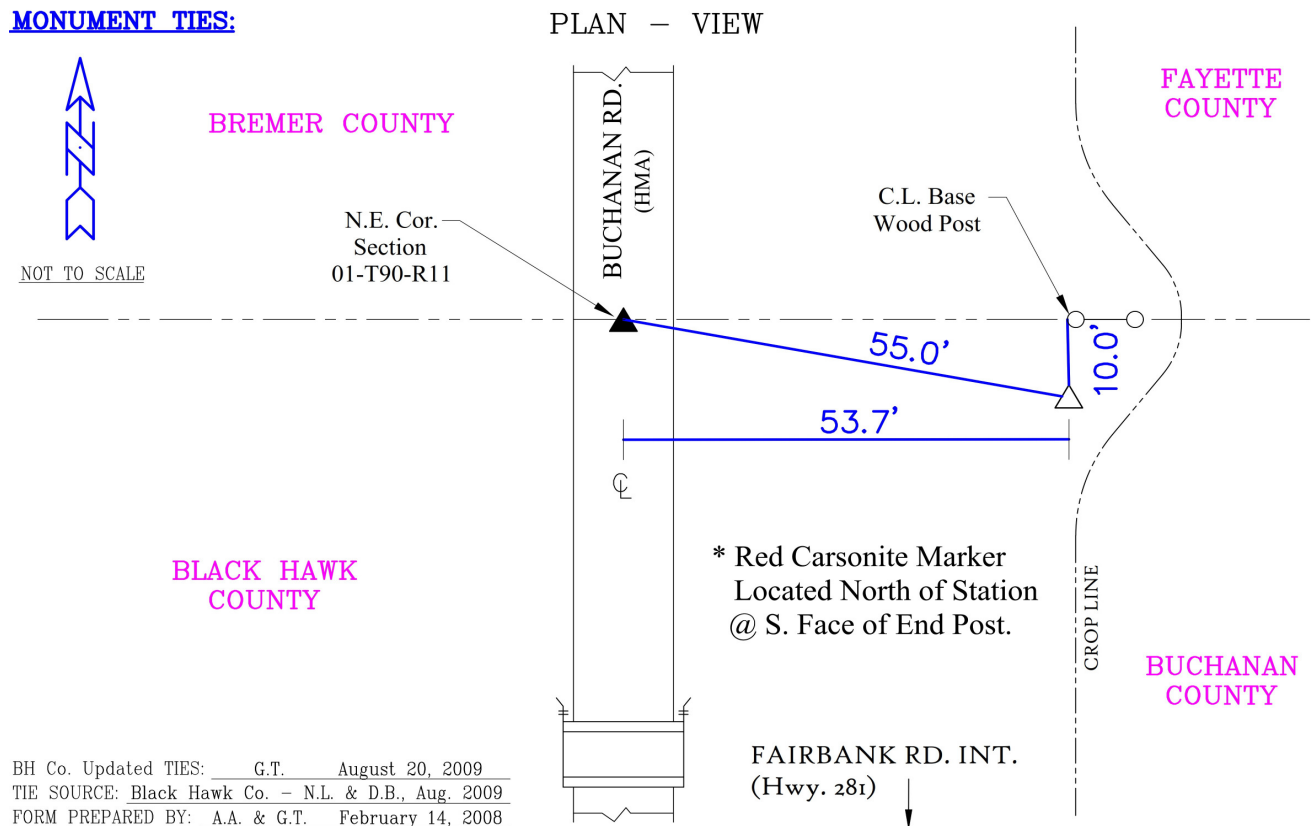
NAD 83(NA2011) Latitude: **N42°38'31.45953"** Longitude: **W92°04'53.41892"**
NAVD 88 Ortho Height: **975.950sft** Ellip. Ht: **874.518sft** **Geoid18(Conus)**

Horizontal Datum: NAD 83(NA2011) - Vertical Datum: NAVD 1988

Iowa North Zone (1401) Northing: **3700232.671sft** Easting: **5302885.521sft**
Mapping Angle: **0°57'41"** Combination Scale Factor: **0.9999036676**

Iowa Regional Coordinate System, Zone 5, Waterloo LCC

IaRCS Zone 5 Northing: **8897155.716sft** Easting: **15545338.286sft**
Mapping Angle: **0°06'51"** Combination Scale Factor: **0.9999902064**

MONUMENT TIES:

This document was prepared by Dan Corbin, Inc. for Black Hawk County, Iowa.

7155



Facing East

