

**Black Hawk County, Iowa**

Units: US Survey Feet

12/01/2020

Point ID: **7153**Stamping on Disk: **94-153**

Type of Monument: *Berntsen 5/8" fluted "Top Security" rod, 6ft long with 2.5" dia. aluminum survey cap, NGS style access cover.*

Physical Details: *Station is flush with ground surface located on north edge of private drive (old roadbed).*

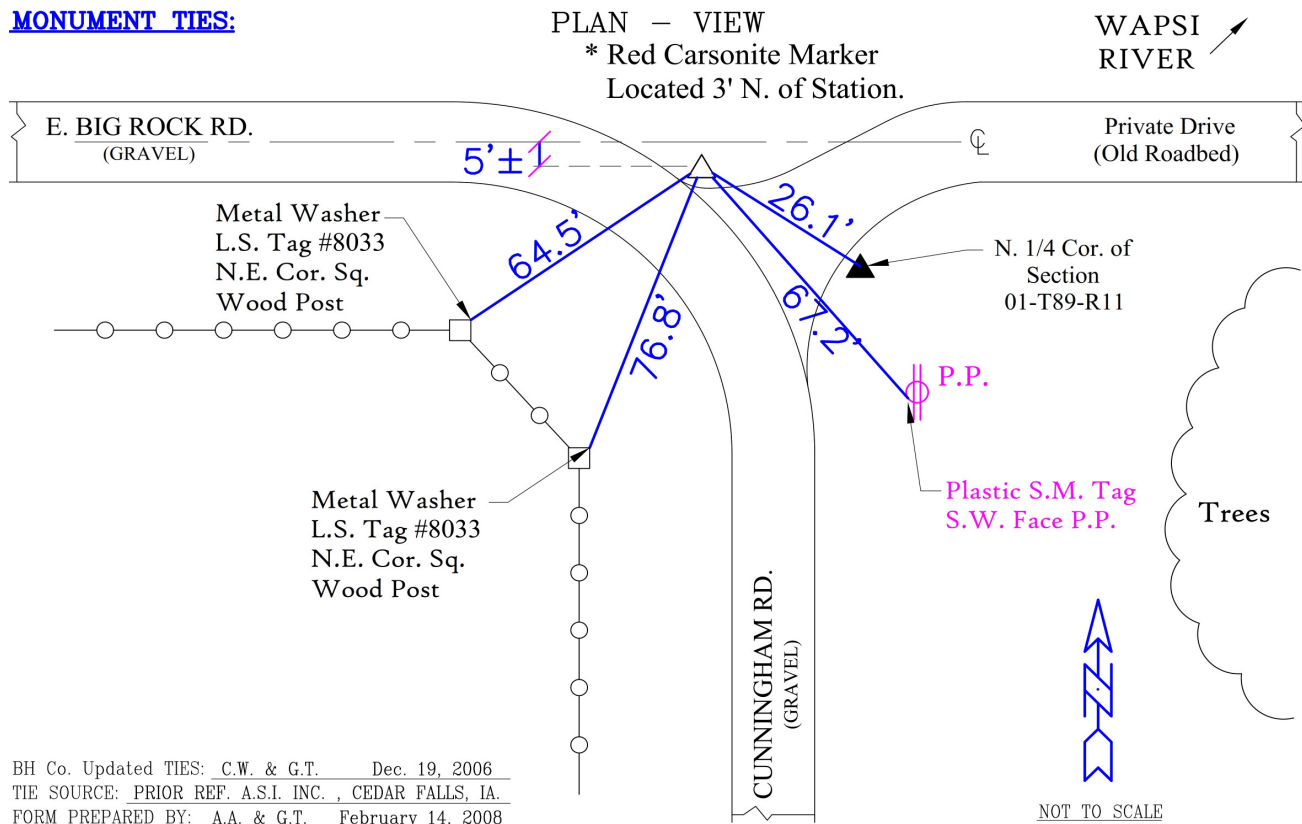
NAD 83(NA2011) Latitude: **N42°33'18.22858"** Longitude: **W92°05'30.66162"**  
NAVD 88 Ortho Height: **925.620sft** Ellip. Ht: **824.118sft** **Geoid18(Conus)**

Horizontal Datum: NAD 83(NA2011) - Vertical Datum: NAVD 1988

**Iowa North Zone (1401)** Northing: **3668481.865sft** Easting: **5300630.623sft**  
Mapping Angle: **0°57'16"** Combination Scale Factor: **0.9999078990**

Iowa Regional Coordinate System, Zone 5, Waterloo LCC

**IaRCS Zone 5** Northing: **8865438.985sft** Easting: **15542613.925sft**  
Mapping Angle: **0°06'26"** Combination Scale Factor: **0.9999939726**

**MONUMENT TIES:**

*This document was prepared by Dan Corbin, Inc. for Black Hawk County, Iowa.*



7153



Facing North

