

**Black Hawk County, Iowa**

Units: US Survey Feet

12/01/2020

Point ID: **7152**Stamping on Disk: **94-152**

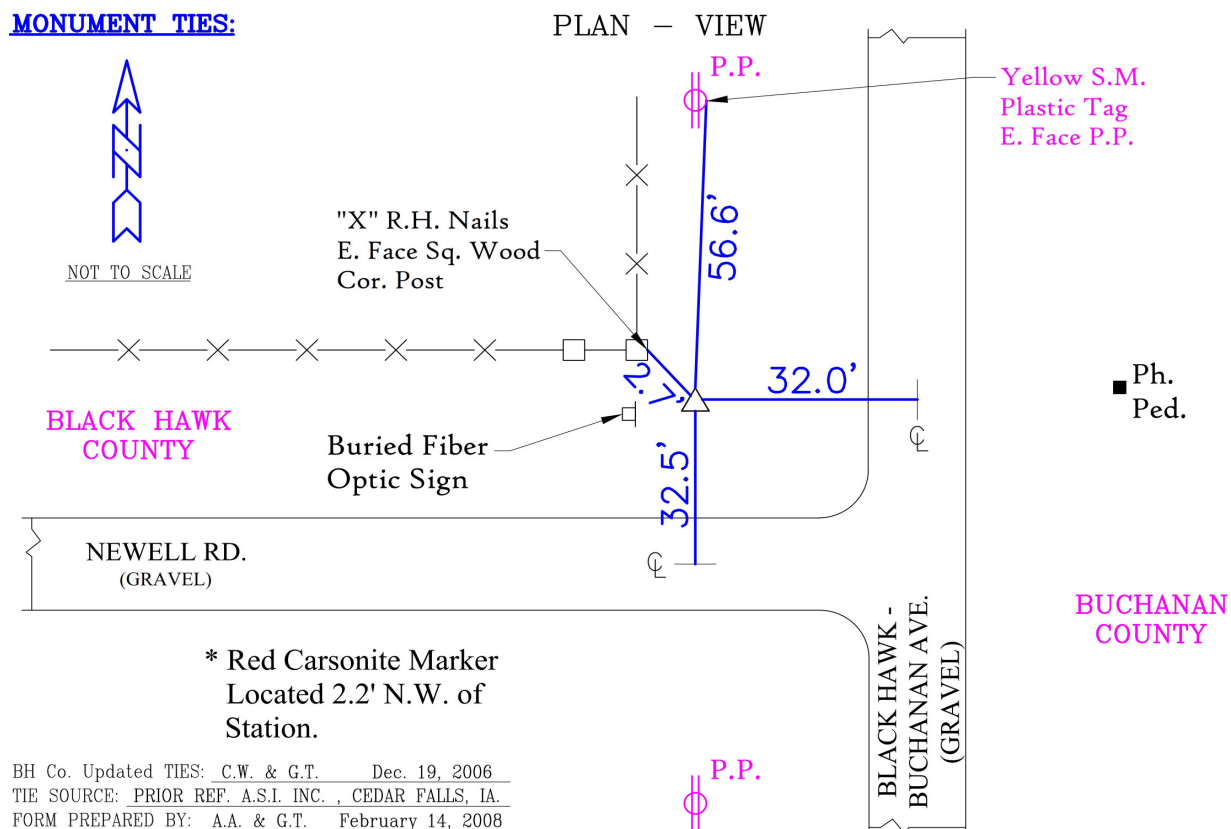
Type of Monument: *Berntsen 5/8" fluted "Top Security" rod, 6ft long with 2.5" dia. aluminum survey cap, NGS style access cover.*

Physical Details: *Station is flush with ground surface located at TBKS corner.*

NAD 83(NA2011) Latitude: **N42°30'42.99226"** Longitude: **W92°04'55.80572"**  
NAVD 88 Ortho Height: **980.550sft** Ellip. Ht: **879.089sft** Geoid18(Conus)

Horizontal Datum: NAD 83(NA2011) - Vertical Datum: NAVD 1988  
**Iowa North Zone (1401)** Northing: **3652813.100sft** Easting: **5303502.477sft**  
Mapping Angle: **0°57'39"** Combination Scale Factor: **0.9999070249**

Iowa Regional Coordinate System, Zone 5, Waterloo LCC  
**IaRCS Zone 5** Northing: **8849728.118sft** Easting: **15545254.011sft**  
Mapping Angle: **0°06'49"** Combination Scale Factor: **0.9999928680**

**MONUMENT TIES:**

*This document was prepared by Dan Corbin, Inc. for Black Hawk County, Iowa.*



7152



Facing Northwest

