

Black Hawk County, Iowa

Units: US Survey Feet

12/01/2020

Point ID: **7151**Stamping on Disk: **94-151**

Type of Monument: *Berntsen 5/8" fluted "Top Security" rod, 6ft long with 2.5" dia. aluminum survey cap, NGS style access cover.*

Physical Details: *Station is 2" +/- above ground surface located at 1' west of TBKS.*

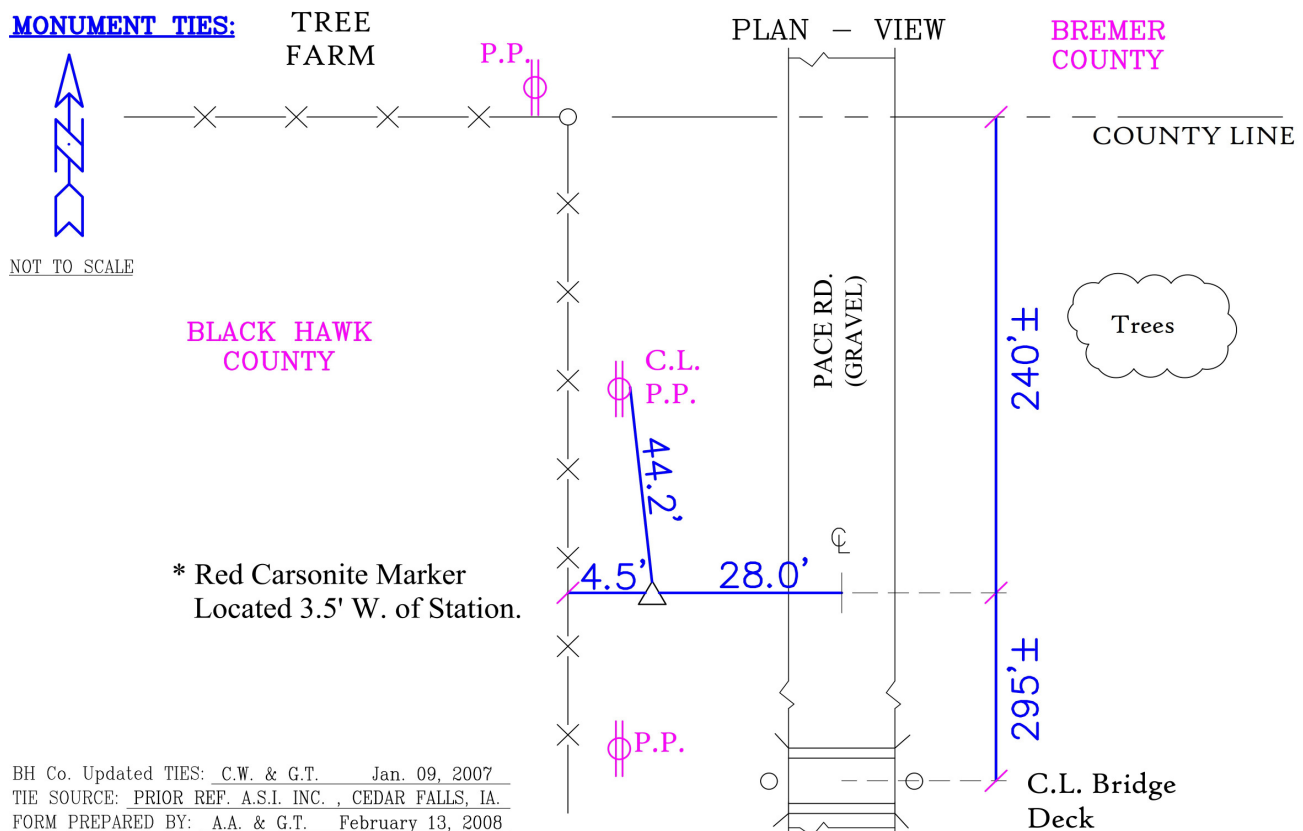
NAD 83(NA2011) Latitude: **N42°38'29.25546"** Longitude: **W92°07'16.10586"**
NAVD 88 Ortho Height: **965.036sft** Ellip. Ht: **863.460sft** Geoid18(Conus)

Horizontal Datum: NAD 83(NA2011) - Vertical Datum: NAVD 1988

Iowa North Zone (1401) Northing: **3699833.152sft** Easting: **5292226.546sft**
Mapping Angle: **0°56'04"** Combination Scale Factor: **0.9999042009**

Iowa Regional Coordinate System, Zone 5, Waterloo LCC

IaRCS Zone 5 Northing: **8896913.825sft** Easting: **15534673.645sft**
Mapping Angle: **0°05'14"** Combination Scale Factor: **0.9999907365**



This document was prepared by Dan Corbin, Inc. for Black Hawk County, Iowa.

7151



Facing West

