

Black Hawk County, Iowa**12/01/2020**

Units: US Survey Feet

Point ID: **7150**Stamping on Disk: **94-150**

Type of Monument: *Berntsen 5/8" fluted "Top Security" rod, 6ft long with 2.5" dia. aluminum survey cap, NGS style access cover.*

Physical Details: *Station is flush with ground surface located on east edge of field entrance at 5' south of crop line.*

NAD 83(NA2011) Latitude: **N42°33'19.27097"** Longitude: **W92°07'26.63399"**
NAVD 88 Ortho Height: **984.114sft** Ellip. Ht: **882.493sft** **Geoid18(Conus)**

Horizontal Datum: NAD 83(NA2011) - Vertical Datum: NAVD 1988

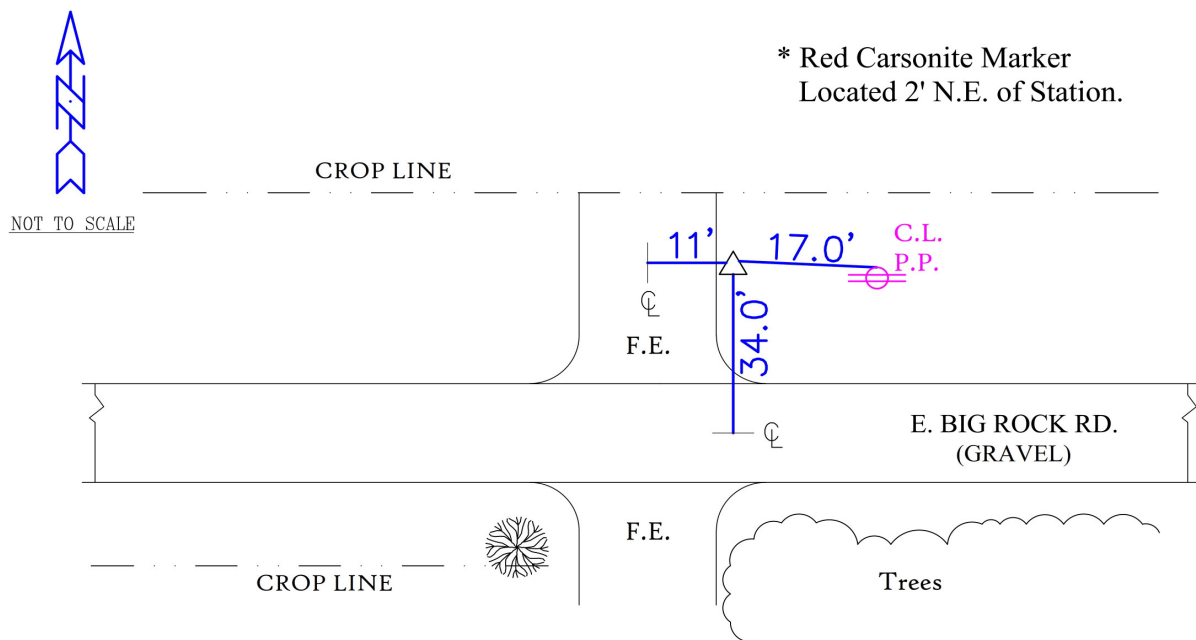
Iowa North Zone (1401) Northing: **3668444.459sft** Easting: **5291950.507sft**
Mapping Angle: **0°55'57"** Combination Scale Factor: **0.9999050990**

Iowa Regional Coordinate System, Zone 5, Waterloo LCC

IaRCS Zone 5 Northing: **8865529.936sft** Easting: **15533933.458sft**
Mapping Angle: **0°05'07"** Combination Scale Factor: **0.9999911739**

MONUMENT TIES:

PLAN - VIEW



BH Co. Updated TIES: C.W. & G.T. Dec. 19, 2006
TIE SOURCE: PRIOR REF. A.S.I. INC., CEDAR FALLS, IA.
FORM PREPARED BY: A.A. & G.T. February 14, 2008

This document was prepared by Dan Corbin, Inc. for Black Hawk County, Iowa.

7150



Facing North

