

**Black Hawk County, Iowa****12/01/2020**

Units: US Survey Feet

Point ID: **7149**Stamping on Disk: **94-149**

Type of Monument: *Berntsen 5/8" fluted "Top Security" rod, 6ft long with 2.5" dia. aluminum survey cap, NGS style access cover.*

Physical Details: *Station is flush with ground surface located just north of northeast corner of drive in TBKS.*

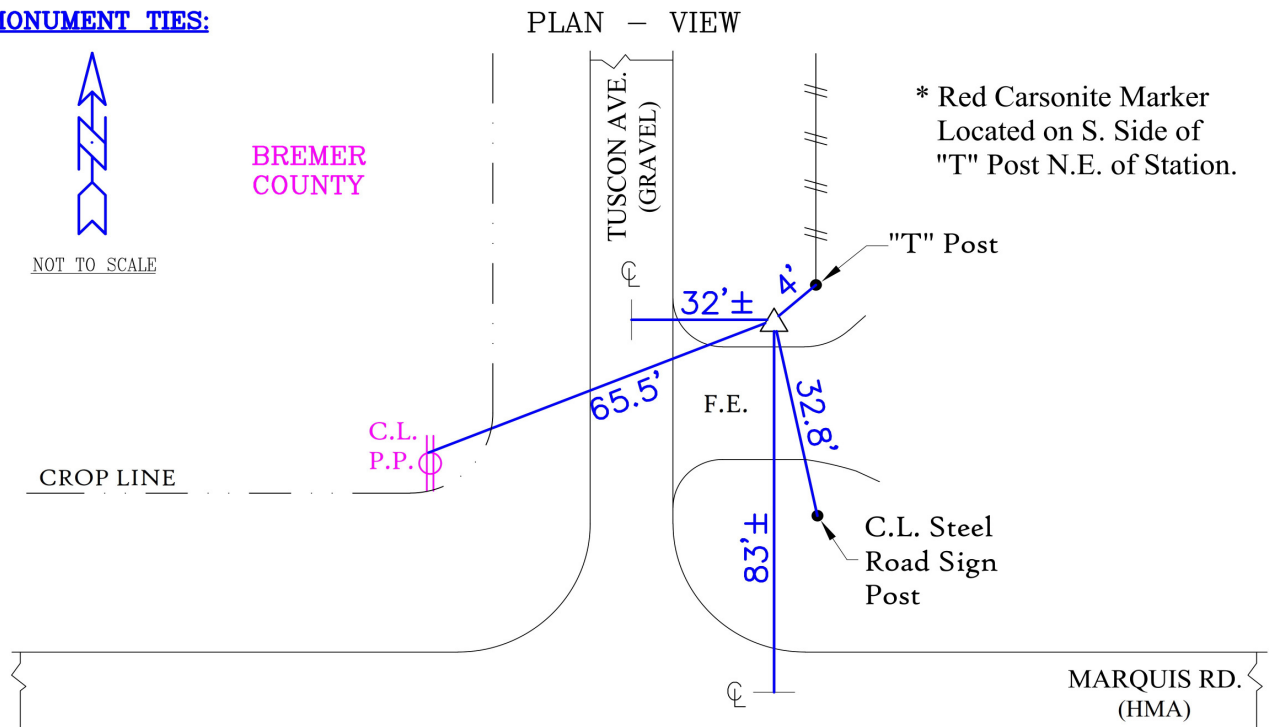
NAD 83(NA2011) Latitude: **N42°38'32.32277"** Longitude: **W92°09'54.42303"**  
NAVD 88 Ortho Height: **996.553sft** Ellip. Ht: **894.768sft** **Geoid18(Conus)**

Horizontal Datum: NAD 83(NA2011) - Vertical Datum: NAVD 1988

**Iowa North Zone (1401)** Northing: **3699953.718sft** Easting: **5280390.811sft**  
Mapping Angle: **0°54'17"** Combination Scale Factor: **0.9999026979**

Iowa Regional Coordinate System, Zone 5, Waterloo LCC

**IaRCS Zone 5** Northing: **8897209.406sft** Easting: **15522839.963sft**  
Mapping Angle: **0°03'27"** Combination Scale Factor: **0.9999892379**

**MONUMENT TIES:**

BH Co. Updated TIES: C.W. & G.T. Nov. 14, 2006  
TIE SOURCE: BLACK HAWK COUNTY ENGINEER'S DEPT.  
FORM PREPARED BY: C.W. & G.T. February 14, 2008

**BLACK HAWK  
COUNTY**

*This document was prepared by Dan Corbin, Inc. for Black Hawk County, Iowa.*



7149



Facing East

