

Black Hawk County, Iowa

Units: US Survey Feet

12/01/2020

Point ID: **7148**Stamping on Disk: **94-148**

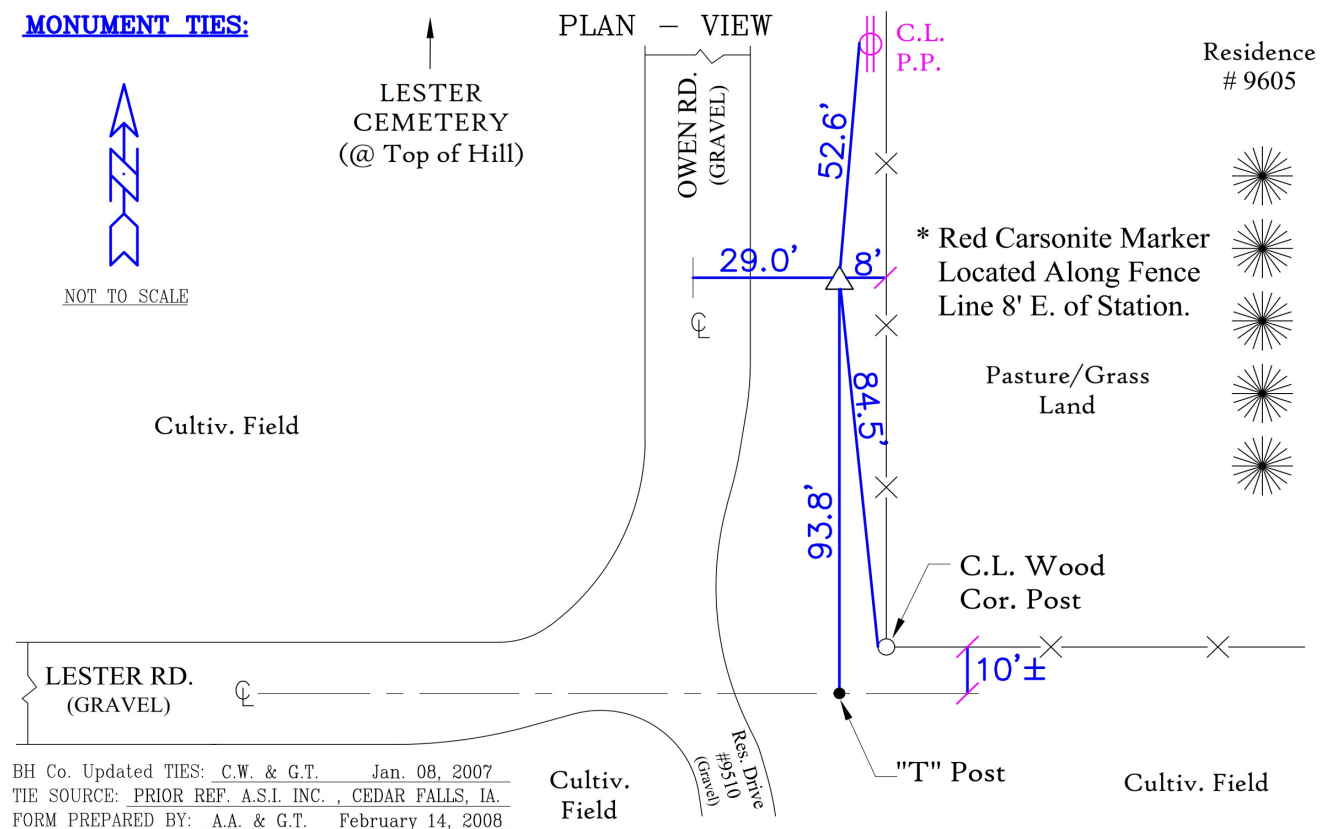
Type of Monument: *Berntsen 5/8" fluted "Top Security" rod, 6ft long with 2.5" dia. aluminum survey cap, NGS style access cover.*

Physical Details: *Station is flush with ground surface located 1.5' east of TBKS.*

NAD 83(NA2011) Latitude: **N42°35'30.79709"** Longitude: **W92°09'02.78075"**
NAVD 88 Ortho Height: **961.324sft** Ellip. Ht: **859.593sft** Geoid18(Conus)

Horizontal Datum: NAD 83(NA2011) - Vertical Datum: NAVD 1988
Iowa North Zone (1401) Northing: **3681641.254sft** Easting: **5284543.195sft**
Mapping Angle: **0°54'52"** Combination Scale Factor: **0.9999051520**

Iowa Regional Coordinate System, Zone 5, Waterloo LCC
IaRCS Zone 5 Northing: **8878835.959sft** Easting: **15526721.462sft**
Mapping Angle: **0°04'02"** Combination Scale Factor: **0.9999914223**



This document was prepared by Dan Corbin, Inc. for Black Hawk County, Iowa.

7148



Facing East

